



HIGHWAY COTTAGE, LONDON ROAD, GU15

KIER CHARLES

SURREY • BERKSHIRE • HANTS

HIGHWAY COTTAGE, LONDON ROAD, GU15

VIEW SAFELY WITH KIER.

A UNIQUE FAMILY HOME WITH THE ADDED BENEFIT OF TWO ANNEX'S.

Having undergone a high level of refurbishment, extensions and conversions to this wonderful home offering easy reach to Camberley town centre.

The property boasts over 3,500 sq ft whilst retaining a cosy yet quality internal and external condition arranged over three floors.

The front offers ample parking and enjoys a carriage gated driveway. The rear garden has been fully landscaped and benefits from two levels. A large decking area with steps down to the main lawned area giving access to annex number 2!

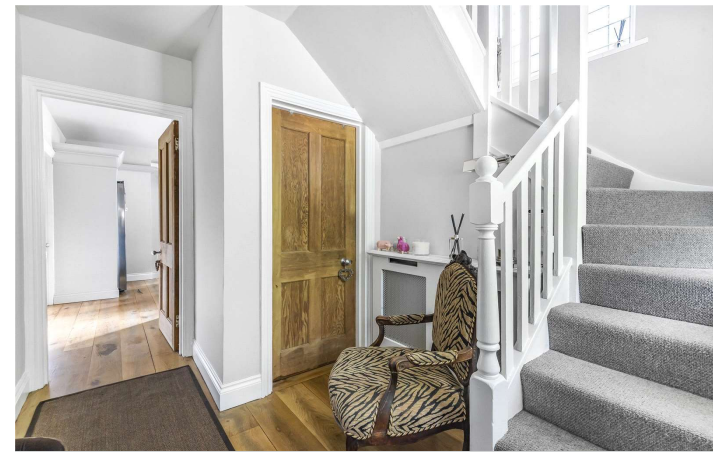
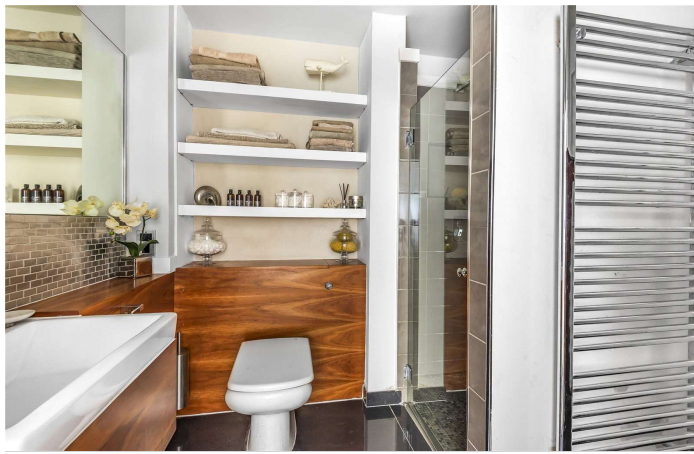
To fully appreciate the layout arrangement and condition throughout a viewing is highly recommended.

- **FIVE - SIX BEDROOMS**
- **FIVE RECEPTION ROOMS**
- **FIVE BATHROOMS**
- **PRIVATE GARDENS**
- **CLOSE TO TOWN**
- **x2 ANNEX x1 DETACHED**
- **FLEXIBLE FAMILY LIVING**
- **WONDERFUL INTERNAL AND EXTERNAL CONDITION**

PROPERTY INFORMATION

Postcode | **GU15 3TW**
Tenure | **Freehold**
Price | **£1,150,000**
Viewing | **By appointment with Kier Charles**

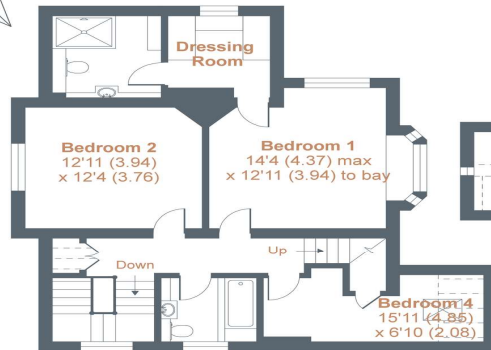




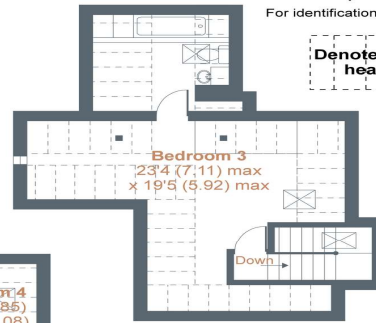
London Road, Camberley, GU15

Approximate Area = 2688 sq ft / 249.7 sq m
 Outbuilding = 388 sq ft / 36 sq m
 Limited Use Area(s) = 420 sq ft / 39 sq m
 Total = 3496 sq ft / 324.7 sq m

For identification only - Not to scale

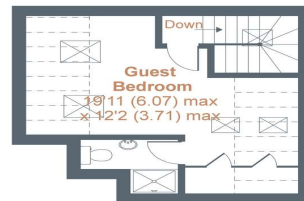


FIRST FLOOR 1



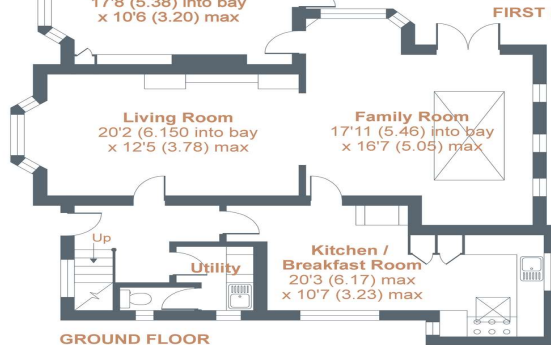
SECOND FLOOR

Denotes restricted head height

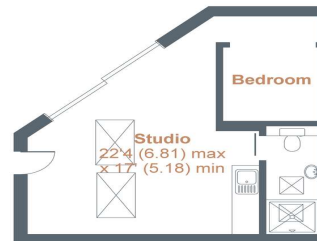


FIRST FLOOR 2

Study
17'8 (5.38) into bay
x 10'6 (3.20) max



GROUND FLOOR



OUTBUILDING



Floor plan produced in accordance with RICS Property Measurement Standards incorporating International Property Measurement Standards (IPMS2 Residential). © nichecom 2021. Produced for Kier Charles Property Services Limited. REF: 748629



CONTACT INFORMATION:

Surrey: 01276 949789
 Berkshire: 01344 513789
 Hampshire: 01252 213789

info@kiercharles.co.uk

KIER CHARLES

SURREY • BERKSHIRE • HANTS