



CHEYLESMORE DRIVE, GU16

**KIER CHARLES**

SURREY • BERKSHIRE • HANTS

## CHEYLESMORE DRIVE, GU16

VIEW SAFELY WITH KIER.

A TRULY MAGNIFICENT FAMILY HOME WITH A STUNNING LANDSCAPED REAR GARDEN ENJOYING COMPLETE PRIVACY.

Sale achieved prior to launch.

Kier Charles benefits from a wide range of buyers from London, international and local due to the specific style of marketing and strategy we tailor to each client and their home.

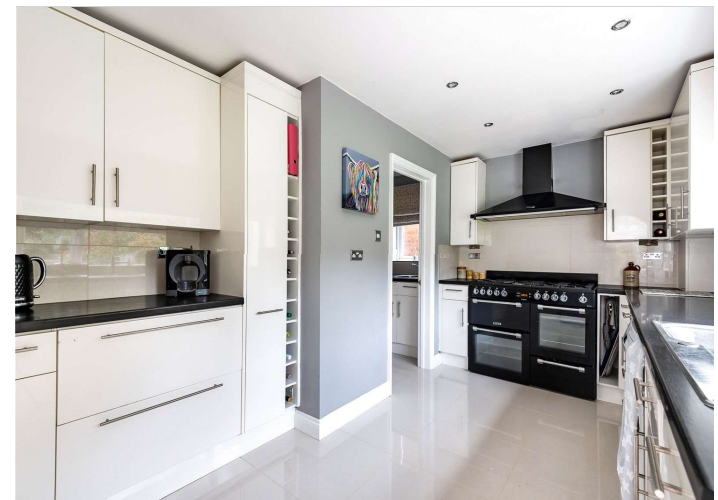
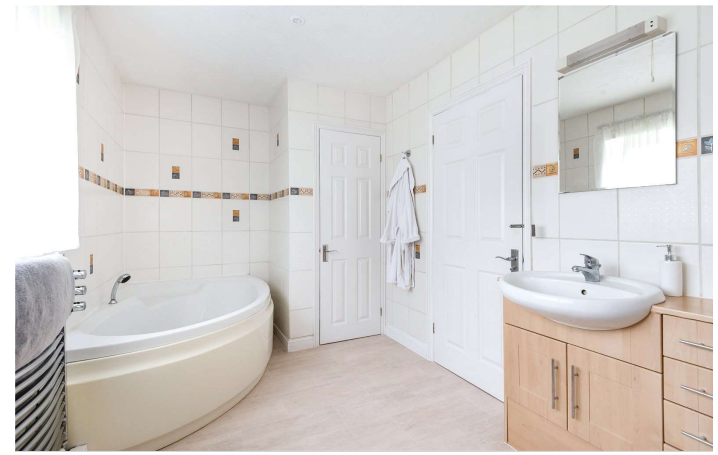
Success is achieved by Kier Charles and our 1-2-1 service is unrivalled.

- FIVE/SIX BEDROOMS
- THREE BATHROOMS
- THREE RECEPTION ROOMS
- CONSERVATORY
- STUNNING REAR GARDEN
- SOUGHT AFTER LOCATION
- 2,400 SQFT OVER TWO FLOORS
- EXCELLENT SCHOOL CATCHMENT

### PROPERTY INFORMATION

Postcode | **GU16 9BN**  
Tenure | **Freehold**  
Price | **£850,000**  
Viewing | **By appointment with Kier Charles**



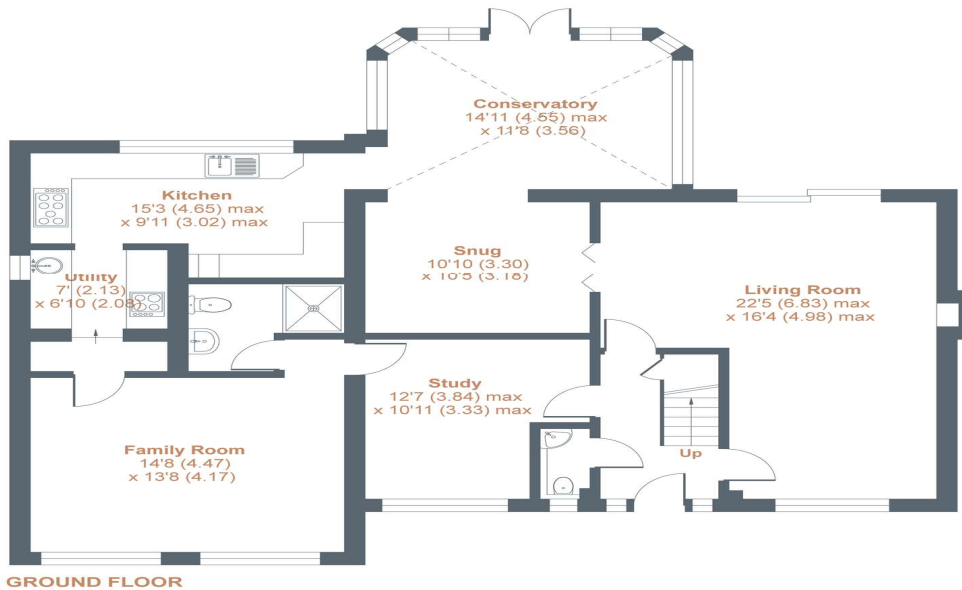
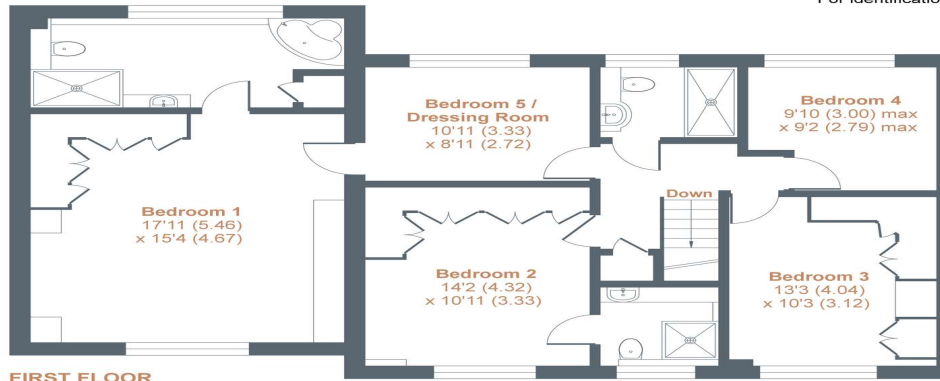




# Cheylesmore Drive, Frimley, Camberley, GU16

Approximate Area = 2396 sq ft / 223 sq m

For identification only - Not to scale



Floor plan produced in accordance with RICS Property Measurement Standards incorporating International Property Measurement Standards (IPMS2 Residential). © nichecom 2021. Produced for Kier Charles Property Services Limited. REF: 787799

KIER CHARLES  
PROPERTY SERVICES

## CONTACT INFORMATION:

Surrey: 01276 949789

Berkshire: 01344 513789

Hampshire: 01252 213789

[info@kiercharles.co.uk](mailto:info@kiercharles.co.uk)

# KIER CHARLES

SURREY • BERKSHIRE • HANTS