



MARTEL CLOSE, GU15

KIER CHARLES

SURREY • BERKSHIRE • HANTS

MARTEL CLOSE, GU15

SOLD stc SAFELY WITH MICHAEL.

A WONDERFUL TERRACED HOME POSITIONED IN A QUIET CUL-DE-SAC LOCATION ON THE EVER POPULAR WELLINGTON PARK DEVELOPMENT.

Sale achieved prior to launch.

Kier Charles benefits from a wide range of buyers from London, international and local due to the specific style of marketing and strategy we tailor to each client and their home.

- PRIVATE REAR GARDEN
- BI-FOLDING DOORS OFF THE LIVING ROOM
- CUL-DE-SAC
- WELLINGTON PARK
- TWO DOUBLE BEDROOMS
- OVERLOOKING PARK

PROPERTY INFORMATION

Postcode | **GU15 1QS**
Tenure | **To be advised approximately 0years**
Price | **£355,000**
Viewing | **By appointment with Kier Charles**

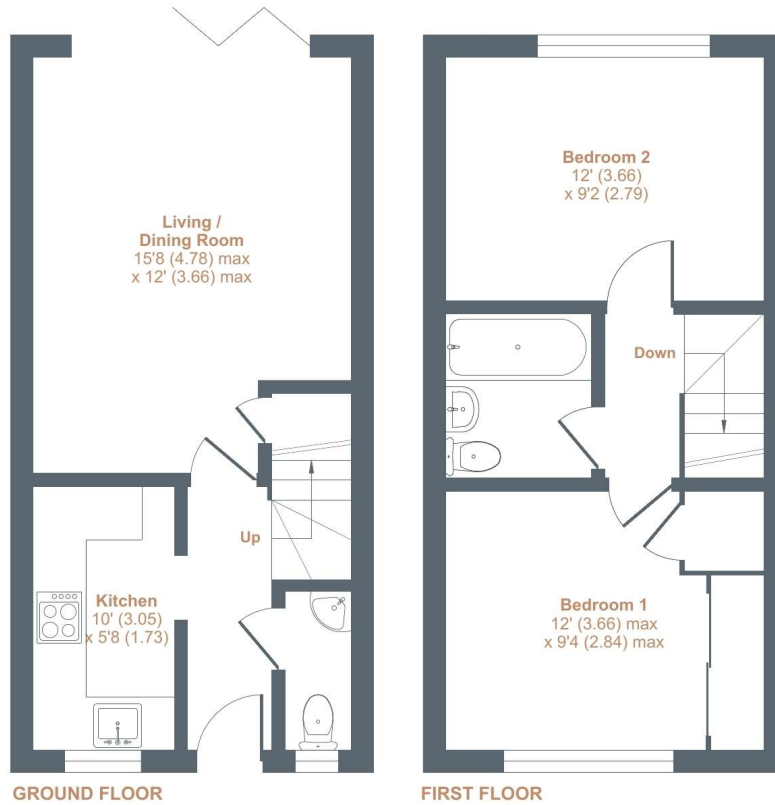




Martel Close, Camberley, GU15

Approximate Area = 628 sq ft / 58 sq m

For identification only - Not to scale



Floor plan produced in accordance with RICS Property Measurement Standards incorporating International Property Measurement Standards (IPMS2 Residential). © nichecom 2022. Produced for Kier Charles Property Services Limited. REF: 853688

KIER CHARLES
PROPERTY SERVICES

CONTACT INFORMATION:

Surrey: 01276 949789

Berkshire: 01344 513789

Hampshire: 01252 213789

info@kiercharles.co.uk

KIER CHARLES

SURREY • BERKSHIRE • HANTS