



PURMEREND CLOSE, GU14

**KIER CHARLES**

SURREY • BERKSHIRE • HANTS

## PURMEREND CLOSE, GU14

VIEW SAFELY WITH KIER.

A UNIQUE ONE BEDROOM HOME WITH A GARAGE AND PRIVATE REAR GARDEN.

Rarely available stands this ideal home for a first time buyer or downsize opportunity.

This property offers a tucked away location, allocated parking, garage and private garden.

There is an entrance hall with storage, updated kitchen and a Livingroom with French doors overlooking the garden. to the first floor a family bathroom, loft access and a large master bedroom with storage.

This great home is position in a quiet cul de sac location offering easy reach to major road, rail links and Farnborough & Fleet centres.

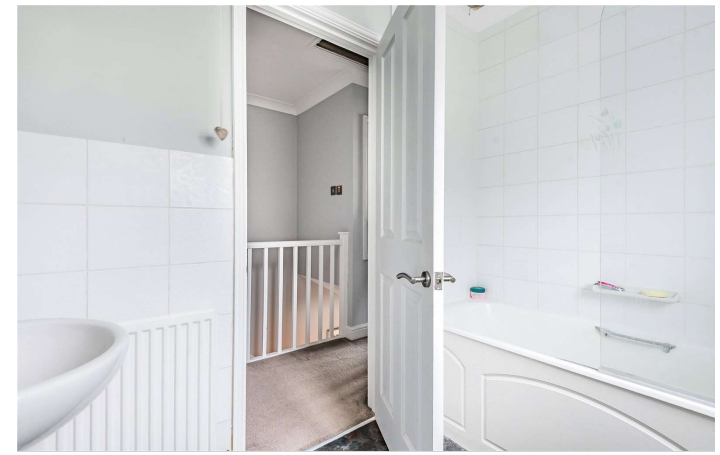
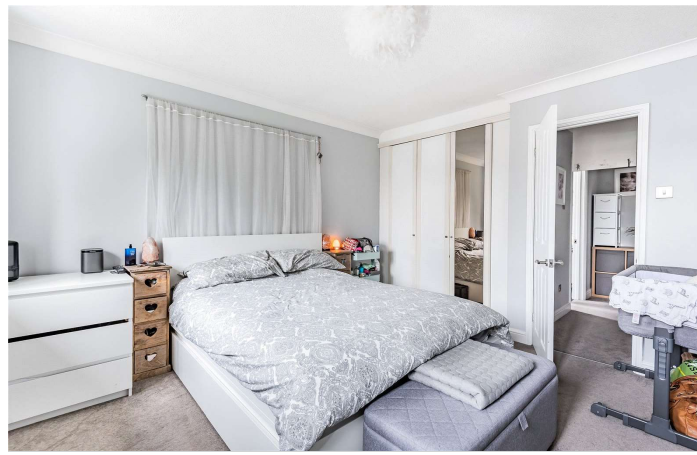
NO CHAIN COMPLICATIONS

- PRIVATE REAR GARDEN
- CUL DE SAC LOCATION
- GARAGE
- SPACIOUS PROPERTY
- LARGE BEDROOM
- LIVINGROOM OVERLOOKING THE GARDEN
- NO CHAIN COMPLICATIONS

### PROPERTY INFORMATION

Postcode | **GU14 9YF**  
Tenure | **Freehold approximately 0years**  
Price | **£249,950**  
Viewing | **By appointment with Kier Charles**





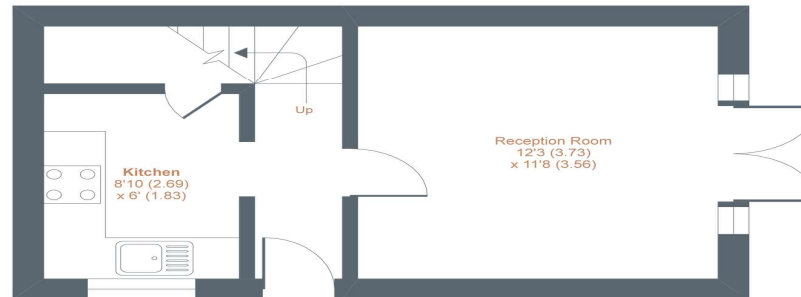


## Purmerend Close, Farnborough, GU14

Approximate Area = 538 sq ft / 49.9 sq m (excludes garage)  
For identification only - Not to scale



FIRST FLOOR



GROUND FLOOR



Floor plan produced in accordance with RICS Property Measurement Standards incorporating International Property Measurement Standards (IPMS2 Residential). © nichecom 2020. Produced for Kier Charles Property Services Limited. REF: 679176

KIER CHARLES  
PROPERTY SERVICES

### CONTACT INFORMATION:

Surrey: 01276 949789

Berkshire: 01344 513789

Hampshire: 01252 213789

[info@kiercharles.co.uk](mailto:info@kiercharles.co.uk)

# KIER CHARLES

SURREY • BERKSHIRE • HANTS