



GLYNSWOOD, GU15

KIER CHARLES
SURREY • BERKSHIRE • HANTS

GLYNSWOOD, GU15

VIEW WITH KIER CHARLES SURREY.

A spacious detached family home sitting on a corner plot and positioned in a quiet cul de sac offering easy reach to highly sought after junior and senior Schools.

The ground floor offers an inviting entrance hall, with access to the living / dining room, w.c and kitchen. There is a study / bedroom four and utility room.

To the first floor there are three good sized bedrooms and a family bathroom.

To the front there is parking for two vehicles, garage and offers a spacious frontage in this highly sought after position.

The rear garden sits on a corner plot and offers a wealth of privacy with potential to extend stp. There is a large decked area which is perfect for al fresco dining and a lawn.

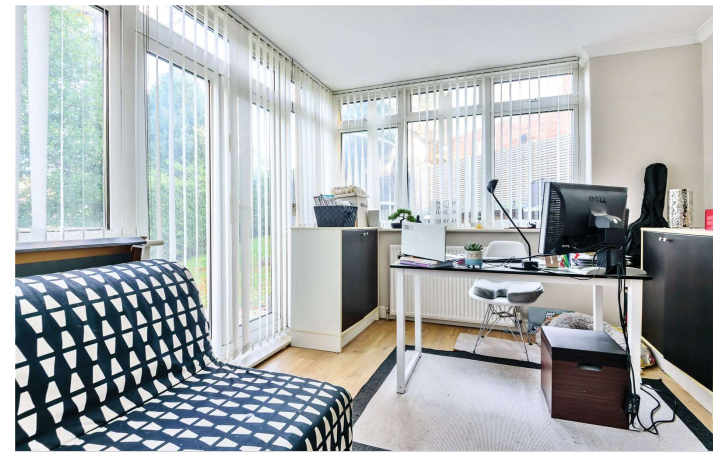
To fully appreciate this wonderful location, space and condition of this family home a personal tour by Kier Charles is highly recommended.

- **NO ONWARD CHAIN**
- **CORNER PLOT**
- **POTENTIAL TO EXTEND STP**
- **TWO RECEPTION ROOMS**
- **THREE/FOUR BEDROOMS**
- **UTILITY ROOM**
- **GARAGE AND DRIVEWAY**

PROPERTY INFORMATION

| | | |
|----------|--|---|
| Postcode | | GU15 1HU |
| Tenure | | Freehold |
| Price | | £600,000 |
| Viewing | | By appointment with Kier Charles |

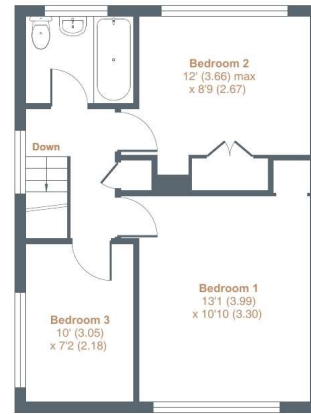




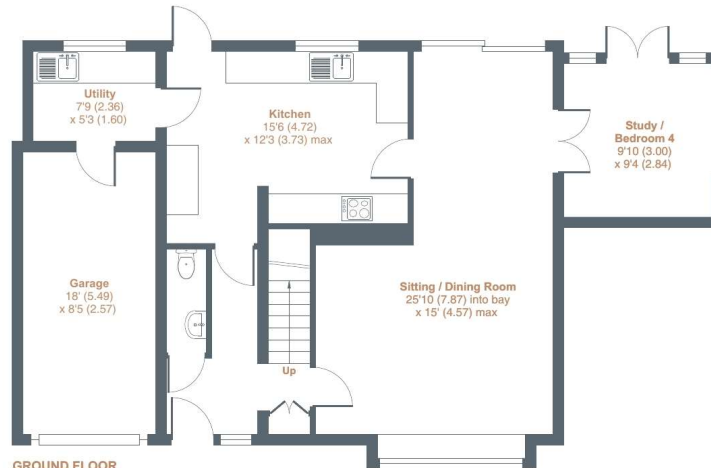
Glynswood, Camberley, GU15

Approximate External Area = 1514 sq ft / 141 sq m (includes garage)

For identification only - Not to scale



FIRST FLOOR



GROUND FLOOR



Floor plan produced in accordance with RICS Property Measurement Standards incorporating International Property Measurement Standards (IPMS2 Residential). © nichecom 2022. Produced for Kier Charles Property Services Limited. REF: 922521

KIER CHARLES
PROPERTY SERVICES

CONTACT INFORMATION:

Surrey: 01276 949789

Berkshire: 01344 513789

Hampshire: 01252 213789

info@kiercharles.co.uk

KIER CHARLES

SURREY • BERKSHIRE • HANTS