



PRIOR END, GU15

**KIER CHARLES**  
SURREY • BERKSHIRE • HANTS

## PRIOR END, GU15

SOLD stc SAFELY WITH KIER.

This family home is positioned in an excellent location offering easy reach to highly commended Schools ideal for a young family.

The property has the added benefit to extend heavily to create a wonderful space.

To avoid disappointment an early viewing is recommended.

Contact our Surrey department 01276 949789 to book in for a personal tour with Kier.

- **FOUR BEDROOMS**
- **PLANNING TO ENLARGE**
- **SOUGHT AFTER LOCATION**
- **EXCELLENT SCHOOL CATCHMENT**
- **NO CHAIN COMPLICATIONS**
- **PRIVATE GARDEN AND LOCATION**
- **NON ESTATE POSITION**

### PROPERTY INFORMATION

Postcode | **GU15 1JW**  
Tenure | **Freehold**  
Price | **£650,000**  
Viewing | **By appointment with Kier Charles**





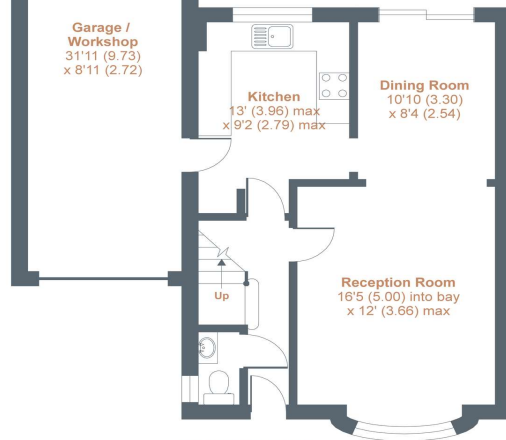
# Prior End, Camberley, GU15

Approximate Area = 1450 sq ft / 134.7 sq m (includes garage)

For identification only - Not to scale



FIRST FLOOR



GROUND FLOOR



Floor plan produced in accordance with RICS Property Measurement Standards incorporating International Property Measurement Standards (IPMS2 Residential). © nichecom 2021. Produced for Kier Charles Property Services Limited. REF: 779669



## CONTACT INFORMATION:

Surrey: 01276 949789

Berkshire: 01344 513789

Hampshire: 01252 213789

[info@kiercharles.co.uk](mailto:info@kiercharles.co.uk)

# KIER CHARLES

SURREY • BERKSHIRE • HANTS