



MINDEN COURT, GU16

KIER CHARLES
SURREY • BERKSHIRE • HANTS

MINDEN COURT, GU16

VIEW SAFELY WITH KIER.

A delightful family home built in 2018 and having undergone further updating by the owner creating a comfortable and classy environment to enjoy.

The property benefits from a spacious living room, WC, storage and a lovely kitchen/breakfast room with central island and bi folding doors overlooking the rear garden.

To the first floor a large master bedroom with ensuite and fitted wardrobes. A further two bedrooms complimented by a family bathroom.

The front benefits from allocated parking for two vehicles and the rear garden has been fully landscaped with artificial grass and receiving excellent privacy.

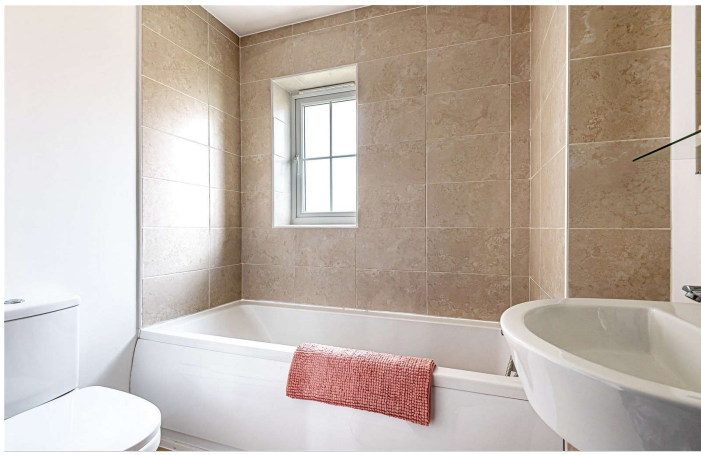
To appreciate the space, condition and location a personal tour with Kier is highly recommended.

- SOUGHT AFTER CUL DE SAC
- HIGH SPECIFICATION
- LANDSCAPED REAR GARDEN
- PARKING x2 VEHICLES
- WALKING DISTANCE TO PARK AND FIELDS
- EXCELLENT SCHOOLS
- LOVELY VILLAGE LOCATION

PROPERTY INFORMATION

Postcode | **GU16 6EE**
Tenure | **Freehold**
Price | **£450,000**
Viewing | **By appointment with Kier Charles**



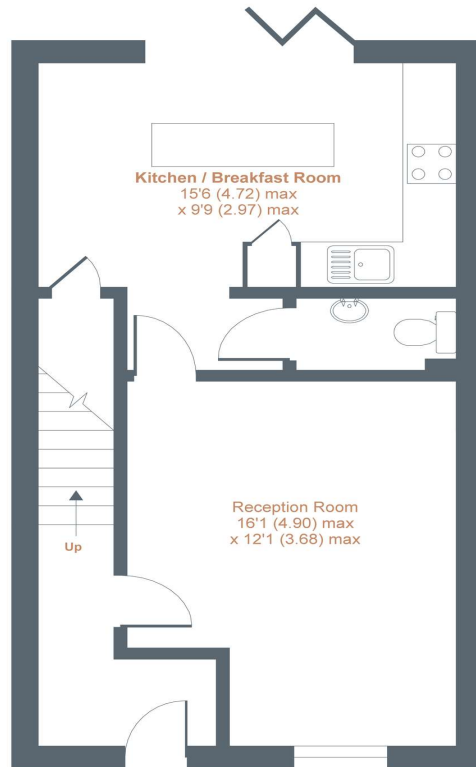




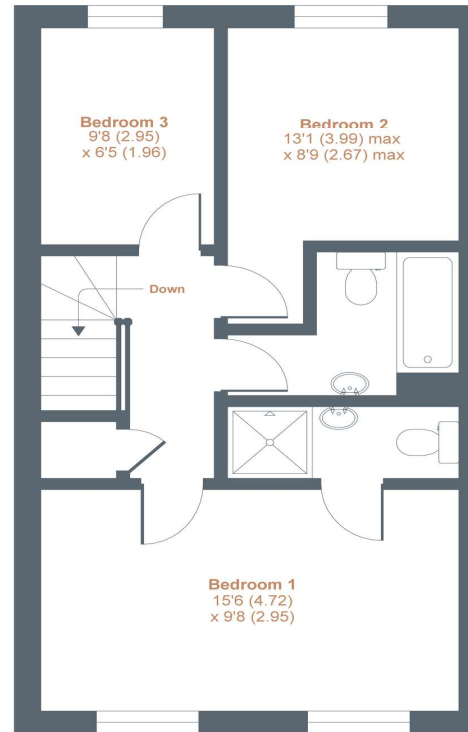
Minden Court, Deepcut, Camberley, GU16

Approximate Area = 950 sq ft / 88.2 sq m

For identification only - Not to scale



GROUND FLOOR



FIRST FLOOR



Floor plan produced in accordance with RICS Property Measurement Standards incorporating International Property Measurement Standards (IPMS2 Residential). © nichecom 2021. Produced for Kier Charles Property Services Limited. REF: 770235

KIER CHARLES
PROPERTY SERVICES

CONTACT INFORMATION:

Surrey: 01276 949789

Berkshire: 01344 513789

Hampshire: 01252 213789

info@kiercharles.co.uk

KIER CHARLES

SURREY • BERKSHIRE • HANTS