



LAMBOURNE DRIVE, GU19

KIER CHARLES

SURREY • BERKSHIRE • HANTS

LAMBOURNE DRIVE, GU19

VIEW WITH KIER.

A stunning family home positioned in a highly sought after cul de sac in Bagshot Village. The property has been re-modelled and an outbuilding added in the large garden offering flexible space including three reception rooms, large kitchen/breakfast room and underfloor heating for the new buyer to enjoy.

Bagshot village enjoys a range of shops, restaurants and excellent Schools. The area is ideal for commuting via the M4/M3 to Reading or London. There is a train line and the A30 ideal to visit local Towns of Camberley, Woking and Ascot.

The property is ideal for a family who work from home or families joining together requiring ample living space and a quiet location.

A viewing is recommended to avoid disappointment.

- **FOUR BEDROOMS**
- **OUTBUILDING FOR OFFICE 30ft!!**
- **LARGE GARDEN**
- **QUIET CUL DE SAC**
- **FLEXIBLE LIVING SPACE**
- **EXCELLENT CONDITION THROUGHOUT**

PROPERTY INFORMATION

Postcode | **GU19 5BY**
Tenure | **Freehold approximately 0years**
Price | **£699,950**
Viewing | **By appointment with Kier Charles**







Lambourne Drive, Bagshot, GU19

Approximate Area = 1760 sq ft / 163.5 sq m (includes garage)

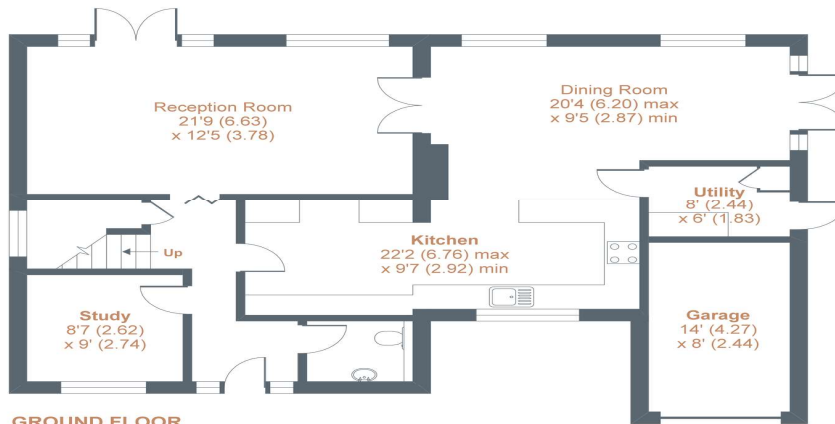
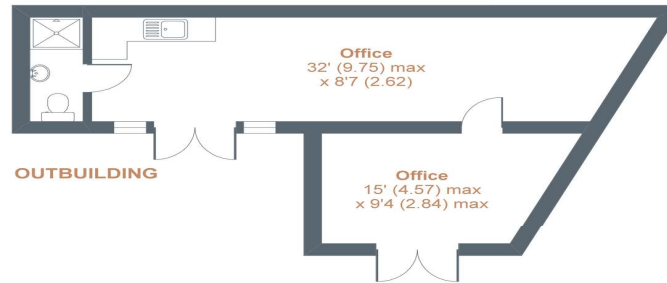
Outbuilding = 425 sq ft / 39.5 sq m

Total = 2185 sq ft / 203 sq m

For identification only - Not to scale



FIRST FLOOR



GROUND FLOOR



Floor plan produced in accordance with RICS Property Measurement Standards incorporating International Property Measurement Standards (IPMS2 Residential). © nichecom 2020. Produced for Kier Charles Property Services Limited. REF: 652460

KIER CHARLES
PROPERTY SERVICES

CONTACT INFORMATION:

Surrey: 01276 949789

Berkshire: 01344 513789

Hampshire: 01252 213789

info@kiercharles.co.uk

KIER CHARLES

SURREY • BERKSHIRE • HANTS