



PROSPECT ROAD, GU14

**KIER CHARLES**

SURREY • BERKSHIRE • HANTS

## PROSPECT ROAD, GU14

VIEW WITH KIER CHARLES HAMPSHIRE.

A delightful semi-detached family home which has undergone a complete refurbishment throughout by the current owners.

The property is positioned within Farnborough offering easy reach to excellent schools, major road, rail links and a stone's throw to shops and parkland.

The entrance hall is spacious and leads to a large living room, open plan kitchen dining room with access to the rear and downstairs w.c.

There are three good size bedrooms with the master benefiting from an en-suite shower room and a re-fitted family bathroom.

Outside to the front there is a good size front garden with side access leading to large and secluded rear garden with an Indian sandstone patio the perfect space for summer entertaining. There is access to a double garage with power and light.

To fully appreciate the space, condition and tucked away location a personal tour with Kier Charles is highly recommended.

- **RE-FURBISHED THROUGHOUT**
- **OPEN PLAN KITCHEN/DINING ROOM**
- **THREE BEDROOMS**
- **EN-SUITE TO MASTER**
- **LOW MAINTENANCE PRIVATE GARDEN**
- **DOUBLE GARAGE**
- **EASY ACCESS TO MAINLINE RAILWAY**

### PROPERTY INFORMATION

Postcode | **GU14 8LB**  
Tenure | **Freehold**  
Price | **£495,000**  
Viewing | **By appointment with Kier Charles**

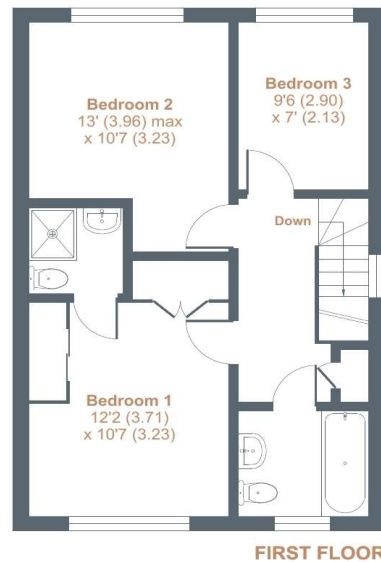
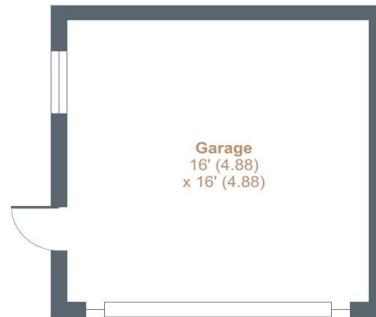




# Prospect Road, Farnborough, GU14

Approximate External Area = 1497 sq ft / 139 sq m (includes garage)

For identification only - Not to scale



Floor plan produced in accordance with RICS Property Measurement Standards incorporating International Property Measurement Standards (IPMS2 Residential). ©nichcom 2022. Produced for Kier Charles Property Services Limited. REF: 984746

KIER CHARLES  
PROPERTY SERVICES

## CONTACT INFORMATION:

Surrey: 01276 949789

Berkshire: 01344 513789

Hampshire: 01252 213789

[info@kiercharles.co.uk](mailto:info@kiercharles.co.uk)

# KIER CHARLES

SURREY • BERKSHIRE • HANTS