



LANCASTER DRIVE, GU15

KIER CHARLES

SURREY • BERKSHIRE • HANTS

LANCASTER DRIVE, GU15

VIEW WITH KIER CHARLES SURREY.

An iconic Charles Church Georgian style townhouse, overlooking Camberley Park and within a few minutes' walk of Camberley town centre with its shops/amenities, library, theatre, train station and pubs/restaurants.

The accommodation is arranged over three floors. The ground floor there is the study/bedroom four, utility room, cloakroom and the garage.

The first floor has a large living room, dining room, kitchen with double oven and gas hob.

The second floor has three bedrooms all with built in wardrobes (main bedroom with en-suite shower room) and a family bathroom.

The rear garden is private and has a patio area ideal for alfresco dining.

To the front there is a driveway parking and further allocated parking space opposite the property.

To fully appreciate the convenient location and flexible space a personal tour with Kier Charles is highly recommended.

- **THREE/FOUR BEDROOMS**
- **TWO/THREE RECEPTION ROOMS**
- **ARRANGED OVER THREE FLOORS**
- **GARAGE AND DRIVEWAY**
- **UTILITY ROOM**
- **PRIVATE GARDEN**
- **TOWN CENTRE LOCATION**
- **CUL-DE-SAC SETTING**
- **SOUGHT AFTER CHARLES CHURCH HOME**
- **NO ONWARD CHAIN**

PROPERTY INFORMATION

Postcode | **GU15 3HY**
Tenure | **Freehold**
Price | **£450,000**
Viewing | **By appointment with Kier Charles**





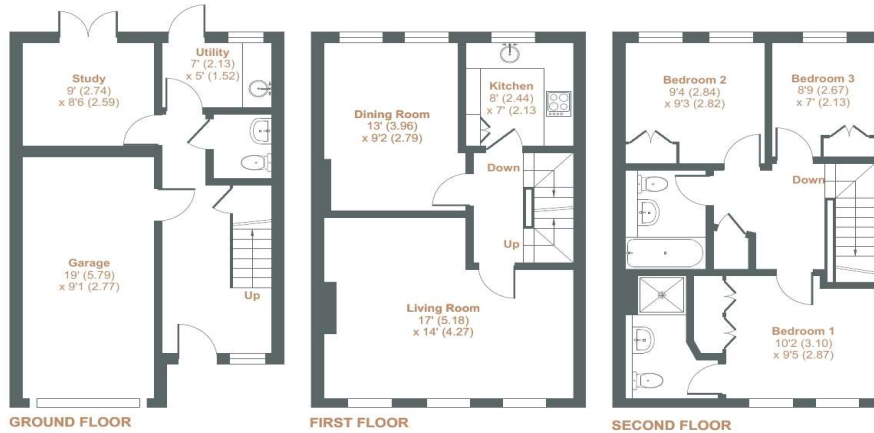
Lancaster Drive, Camberley, GU15

Approximate Internal Area = 1192 sq ft / 110.7 sq m

Garage = 168 sq ft / 15.6 sq m

Total = 1360 sq ft / 126.3 sq m

For identification only - Not to scale



Floor plan produced in accordance with RICS Property Measurement Standards incorporating International Property Measurement Standards (IPMS2 Residential). © nichecom 2024. Produced for Kier Charles Property Services Limited. REF: 1089024

KIER CHARLES
PROPERTY SERVICES

CONTACT INFORMATION:

Surrey: 01276 949789

Berkshire: 01344 513789

Hampshire: 01252 213789

info@kiercharles.co.uk

KIER CHARLES

SURREY • BERKSHIRE • HANTS