



CROXLEY RISE, SL6

KIER CHARLES

SURREY • BERKSHIRE • HANTS

CROXLEY RISE, SL6

SOLD stc SAFELY WITH KIER.

A TWO BEDROOM PROPERTY IN NEED OF MODERNISATION THROUGHOUT. NO CHAIN COMPLICATIONS.

The property is in the process of receiving a lease extension and is priced to sell.

There is parking available, schools and shops are nearby.

M Maidenhead Town centre is a short drive and also near the M4 and Railway offering easy commuter links.

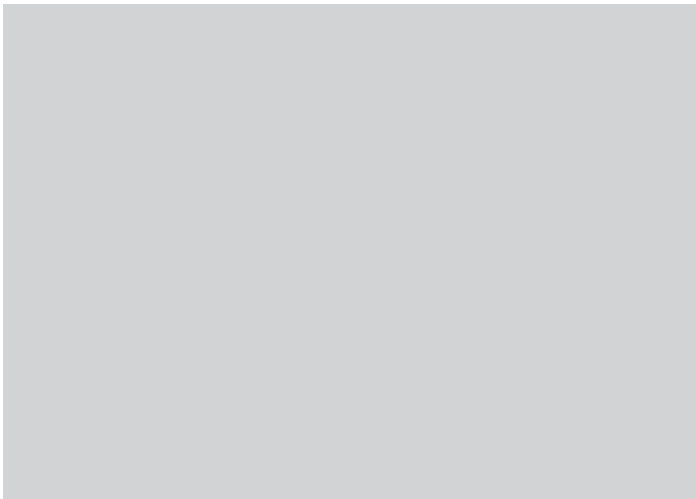
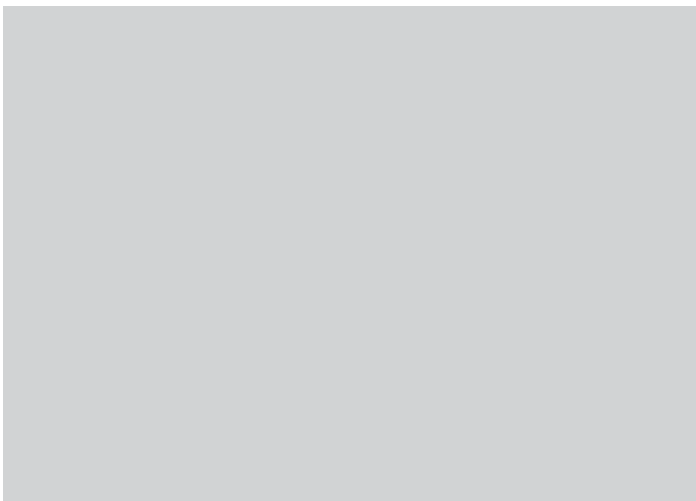
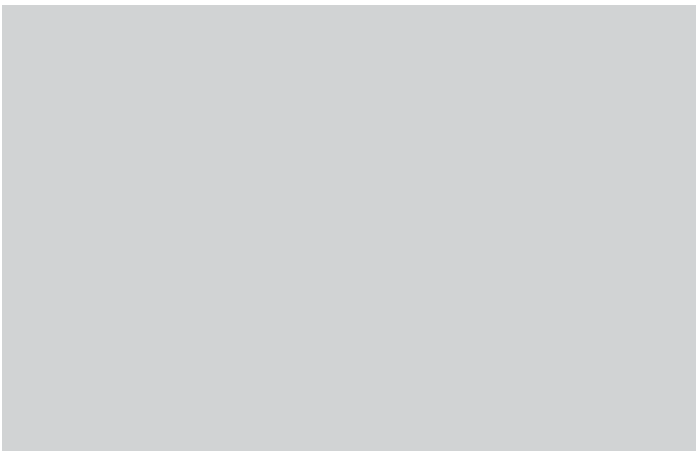
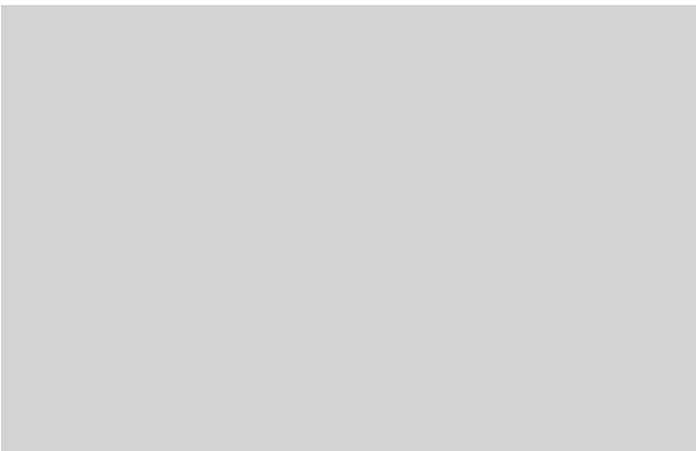
To fully appreciate the space and potential this apartment offers a viewing is recommended.

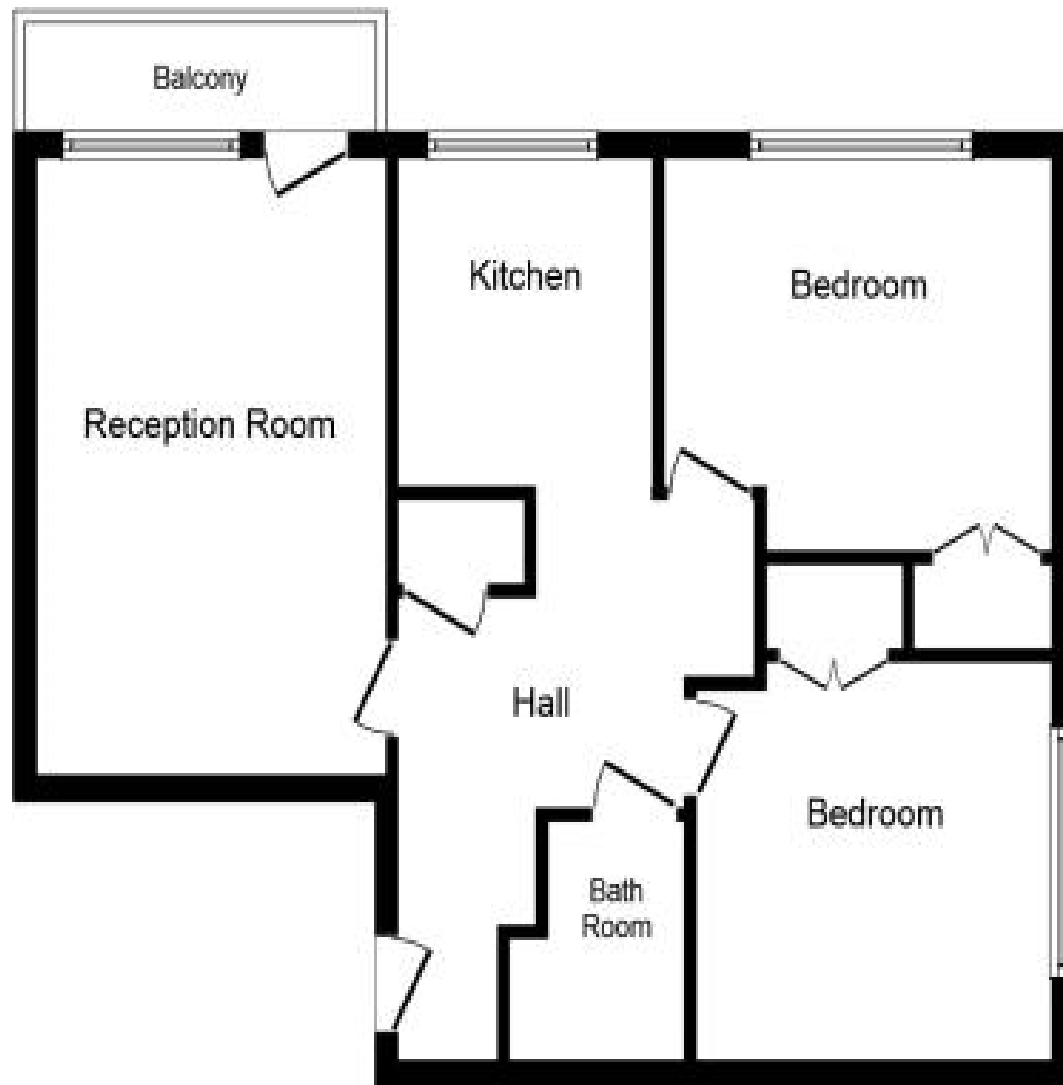
- **TWO BEDROOMS**
- **IN NEED OF UPDATING THROUGHOUT**
- **SOUTH FACING BALCONY**
- **STUNNING VIEWS**
- **NO CHAIN COMPLICATIONS**
- **EXTENDED LEASE IN PROCESS**

PROPERTY INFORMATION

Postcode | **SL6 4JF**
Tenure | **Leasehold Client updating TBA**
Price | **£225,000**
Viewing | **By appointment with Kier Charles**







Floor Plan

CONTACT INFORMATION:

Surrey: 01276 949789
Berkshire: 01344 513789
Hampshire: 01252 213789

info@kiercharles.co.uk

KIER CHARLES

SURREY • BERKSHIRE • HANTS