



FIELD LANE, GU16

KIER CHARLES

SURREY • BERKSHIRE • HANTS

FIELD LANE, GU16

VIEW SAFELY WITH KIER.

A MAGNIFICENT FAMILY HOME POSITIONED WITHIN WALKING DISTANCE TO HIGHLY SOUGHT AFTER SCHOOLS.

This wonderful home is in excellent condition throughout with the added benefit of an outbuilding currently used as an office.

Arranged over two floors there is a master bedroom with ensuite, three further bedrooms and family bathroom.

To the ground floor there is an open plan kitchen/dining room, living room, utility, wc and conservatory.

The rear garden receives excellent privacy and is of a sunny aspect and access to a spacious garage and driveway parking.

To appreciate the space, condition and convenient location a personal viewing with Kier is recommended to avoid disappointment.

- **FOUR BEDROOMS**
- **TWO BATHROOMS**
- **OPEN PLAN KITCHEN/DINING ROOM**
- **GARAGE AND PARKING**
- **PRIVATE GARDEN**
- **OUTBUILDING**
- **EXCELLENT CONDITION THROUGHOUT**
- **WONDERFUL SCHOOL CATCHMENT**

PROPERTY INFORMATION

Postcode | **GU16 8JZ**
Tenure | **Freehold**
Price | **£630,000**
Viewing | **By appointment with Kier Charles**





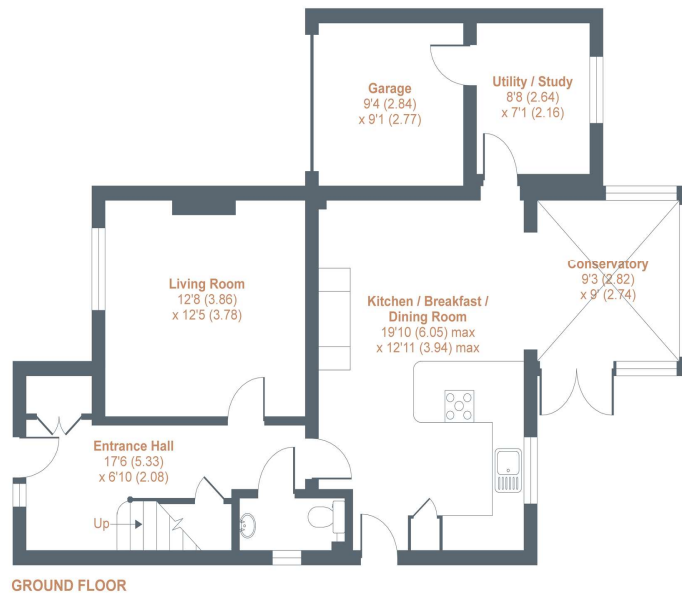
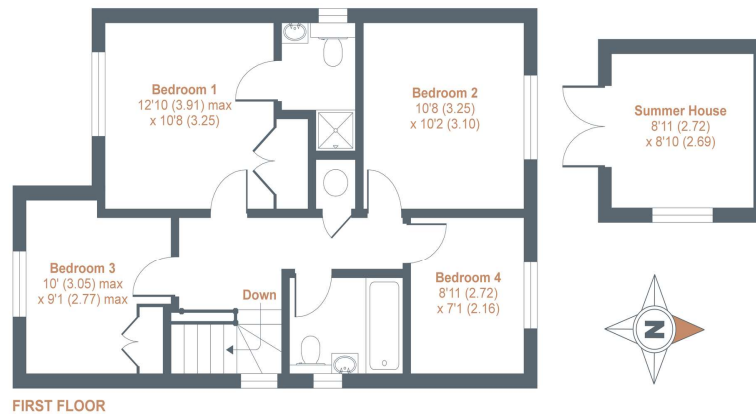
Field Lane, Frimley, GU16

Approximate Area = 1435 sq ft / 133.3 sq m (includes garage)

Outbuilding = 80 sq ft / 7.4 sq m

Total = 1515 sq ft / 141 sq m

For identification only - Not to scale



Floor plan produced in accordance with RICS Property Measurement Standards incorporating International Property Measurement Standards (IPMS2 Residential). © nichecom 2021. Produced for Kier Charles Property Services Limited. REF: 767058



CONTACT INFORMATION:

Surrey: 01276 949789

Berkshire: 01344 513789

Hampshire: 01252 213789

info@kiercharles.co.uk

KIER CHARLES

SURREY • BERKSHIRE • HANTS