



BEECHCROFT CLOSE, SL5

KIER CHARLES

SURREY • BERKSHIRE • HANTS

A HIGHLY DESIRABLE TOWN HOUSE POSITIONED IN A GATED DEVELOPMENT ON THE FRINGES OF ASCOT CENTRE.

Looking for a spacious and modern home for your family or an investment opportunity? This stunning six-bedroom, five-bathroom townhouse is the perfect fit. Located in a family-friendly gated development in the heart of Sunninghill, this property offers everything you need for comfortable and convenient living.

From the owner:

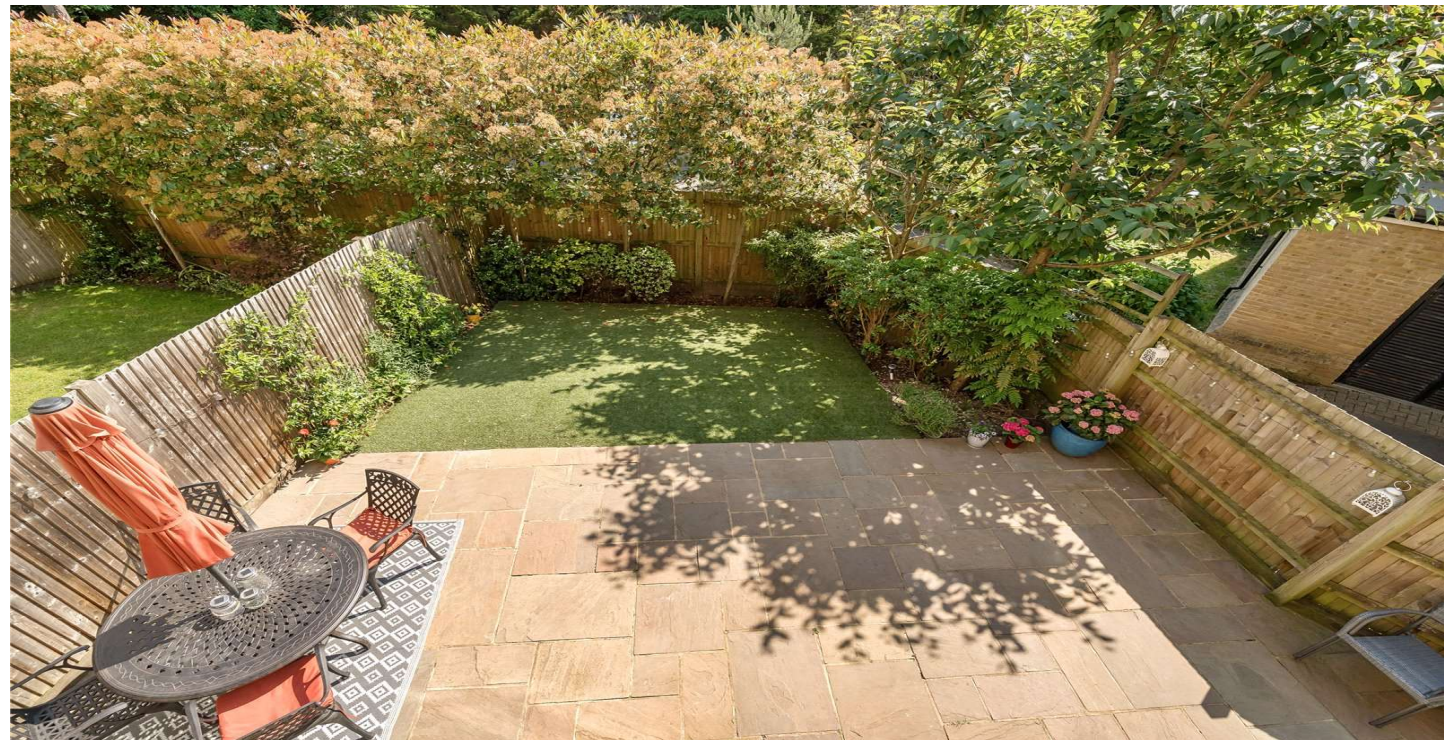
We have loved this house and the fabulous community within Beechcroft Close. I wasn't sure about living in a townhouse at first, but it's been perfect for our family, and our two huge dogs! As our daughter moved from teenager to young adult giving her the top floor was fabulous; multiple friends were able to stay over, play instruments in the music-room or chill in the TV room... without disturbing anyone. We enjoy breakfast and lunch together as a family in the kitchen/breakfast room, and then retire to the lounge for our evening meal – our daughter often prefers to remain in the kitchen of an evening, entertaining friends.

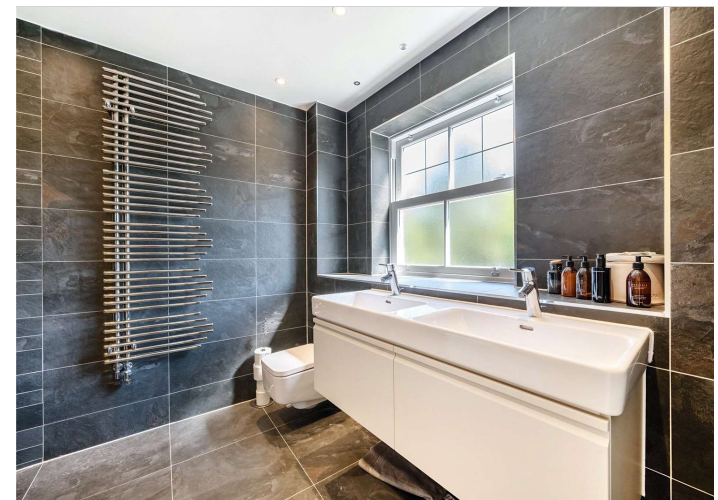
Located within easy reach of local amenities, schools, and public transportation, this home offers both comfort and convenience. Located in Sunninghill, in between Ascot and Sunningdale, where the train stations run services to London Waterloo, Reading and Guildford. Nearby schools include Charters, St Francis, St Michaels and The Marist. The village has several local high street businesses and great restaurants and pubs. Nearby places of interest include Ascot Racecourse, Coworth Park, Guards Polo Club, Legoland, Wentworth Club and Windsor Great Park. Sunninghill is also convenient for the M3, M4, M25 and Heathrow Airport.

To fully appreciate the space, location and condition a personal tour with Kier Charles is highly recommended.

PROPERTY INFORMATION

Postcode | **SL5 7DB**
Tenure | **Freehold**
Price | **£1,300,000**
Viewing | **By appointment with Kier Charles**





Beechcroft Close, Ascot, SL5

Approximate External Area = 3739 sq ft / 347.3 sq m (includes garage)

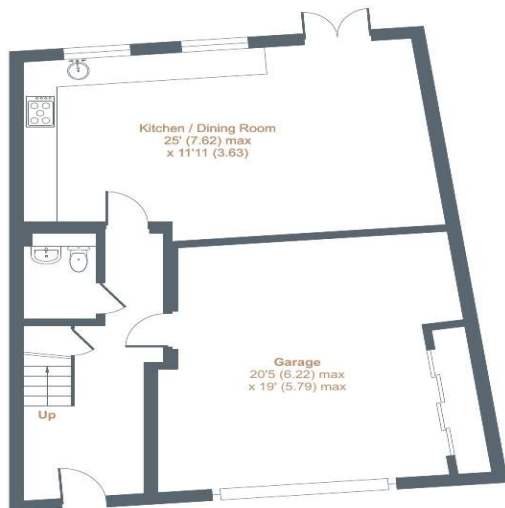
For identification only - Not to scale



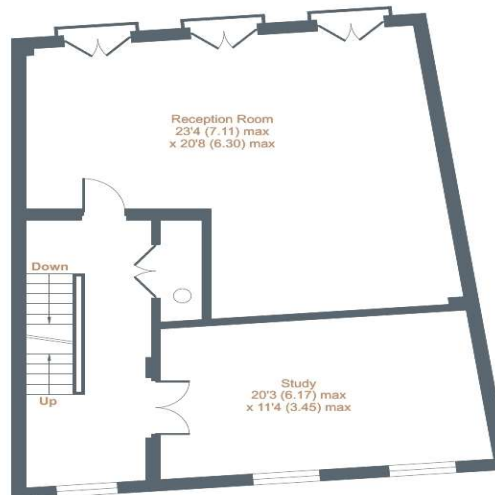
THIRD FLOOR



SECOND FLOOR



GROUND FLOOR



FIRST FLOOR



Floor plan produced in accordance with RICS Property Measurement Standards incorporating International Property Measurement Standards (IPMS2 Residential). © n/checom 2022. Produced for Kier Charles Property Services Limited. REF: 993588

KIER CHARLES
PROPERTY SERVICES

CONTACT INFORMATION:

Surrey: 01276 949789

Berkshire: 01344 513789

Hampshire: 01252 213789

info@kiercharles.co.uk

KIER CHARLES

SURREY • BERKSHIRE • HANTS