



RIDGEWOOD DRIVE, GU16

KIER CHARLES

SURREY • BERKSHIRE • HANTS

RIDGEWOOD DRIVE, GU16

VIEW SAFELY WITH KIER.

A STYLISH DETACHED FAMILY HOME HAVING UNDERGONE COMPLETE REFURBISHMENT TO A HIGH SPECIFICATION THROUGHOUT.

Positioned in the ever sought after gated location of Ridgewood Drive offering excellent School catchment, close to shops and easy reach to major road and rail links.

The property has had extensive works including opening the living/dining reception now measuring 32ft, kitchen & utility, conservatory and a wonderful entrance hall.

To the first floor there are Four well-appointed bedrooms and four stunning bathrooms.

A flat laid to lawn garden receiving good privacy and enclosed. Access to the front with double driveway and double garage also enjoying potential to extend over STPP and consent.

To fully appreciate the space, location and condition a personal tour with Kier is recommended.

- **FOUR BEDROOMS**
- **FOUR BATHROOMS TWO WITH UNDERFLOOR HEATING**
- **LARGE ENTRANCE HALL**
- **32ft RECEPTION ROOM**
- **KITCHEN & UTILITY**
- **EXCELLENT SCHOOL CATCHMENT**
- **REFURBISHED THROUGHOUT**
- **GATED DEVELOPMENT**
- **DOUBLE GARAGE**

PROPERTY INFORMATION

Postcode | **GU16 9QF**
Tenure | **Freehold**
Price | **£850,000**
Viewing | **By appointment with Kier Charles**

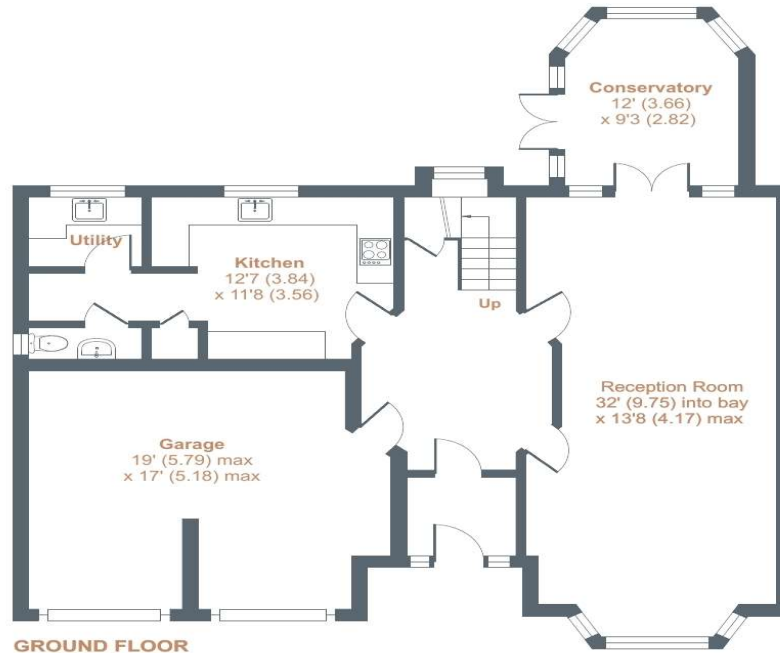
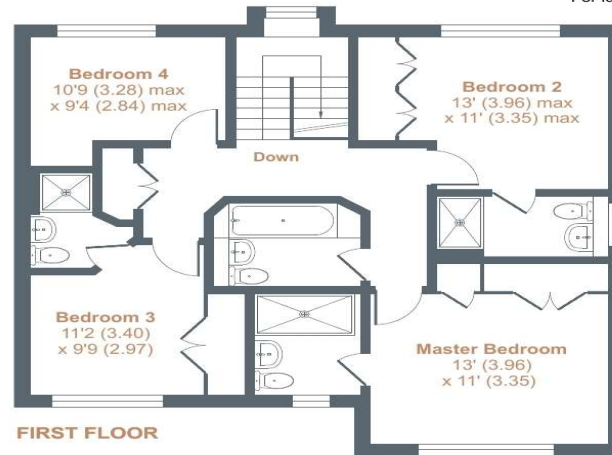




Ridgewood Drive, Frimley, Camberley, GU16

Approximate External Area = 2367 sq ft / 220 sq m (includes garage)

For identification only - Not to scale



Floor plan produced in accordance with RICS Property Measurement Standards incorporating International Property Measurement Standards (IPMS2 Residential). © nichecom 2022. Produced for Kier Charles Property Services Limited. REF: 808160

KIER CHARLES
PROPERTY SERVICES

CONTACT INFORMATION:

Surrey: 01276 949789

Berkshire: 01344 513789

Hampshire: 01252 213789

info@kiercharles.co.uk

KIER CHARLES

SURREY • BERKSHIRE • HANTS