



**Angela Marden**  
ESTATE AGENTS



**Monkey Puzzle Close, Windmill Hill, Hailsham,  
East Sussex, BN27 4ST**

**Offers In Excess of :  
£350,000.**



# Monkey Puzzle Close, Windmill Hill, Hailsham, East Sussex, BN27 4ST

This BEAUTIFUL end of terrace family home offers BRIGHT & AIRY spacious rooms, a STUNNING dining kitchen & a characterful, exposed BRICK FIREPLACE with space & flue for a log burner.

This suprisingly spacious property compromises of a downstairs cloakroom and a kitchen with a built-in fridge/freezer, washing machine, dishwasher and an eye level double oven, both with underfloor heating. The kitchen also has that extra space for a large dining table for those who love to entertain, and there's a lovely, large sitting room with French doors leading out to the rear garden.

The first-floor compromises of a master bedroom with lots of built in wardrobes, a lovely en-suite with underfloor heating. A second bedroom with built in wardrobes, a third bedroom and the main bathroom also with underfloor heating.

The property offers ample parking to the rear with room for three modern vehicles on your own paved driveway, as well as the bonus of visitor parking spaces.

## Rooms

### GROUND FLOOR

Entrance Hall

Downstairs Cloakroom 2'11"x7'2" (0.9mx2.18m)

Kitchen/Dining Area 15'11"x17'4" (4.85mx5.28m)

Sitting Room 23'9"x14'5" (7.24mx4.4m)

### FIRST FLOOR

Landing

Master Bedroom 13'6"x16' (4.11mx4.88m)

En-Suite 6'3"x5'9" (1.9mx1.75m)

Bedroom Two 9'11"x12'7" (3.02mx3.84m)

Bedroom Three 9'8"x10'7" (2.95mx3.23m)

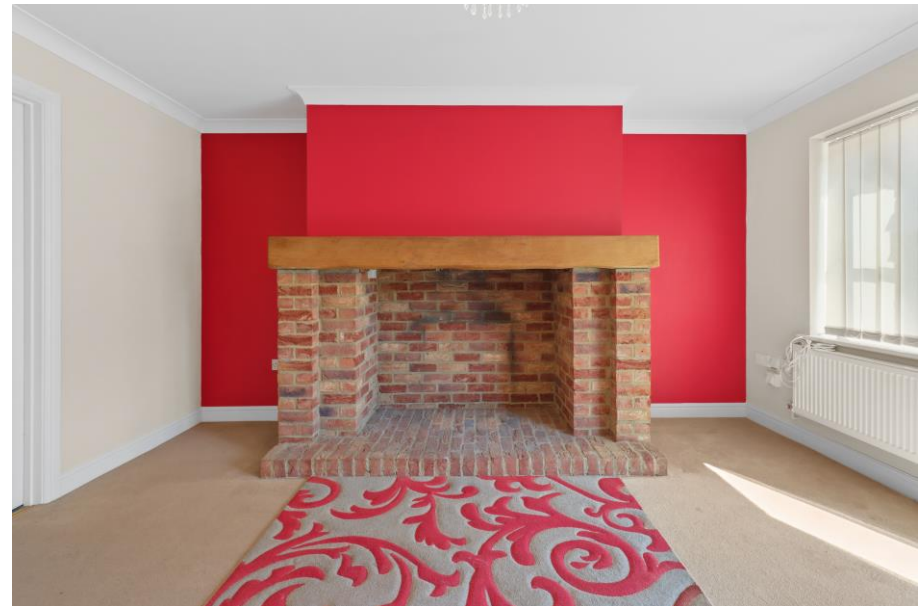
Bathroom 7'x7'3" (2.13mx2.2m)

### EXTERIOR

Front And Rear Gardens

Driveway For Three Cars

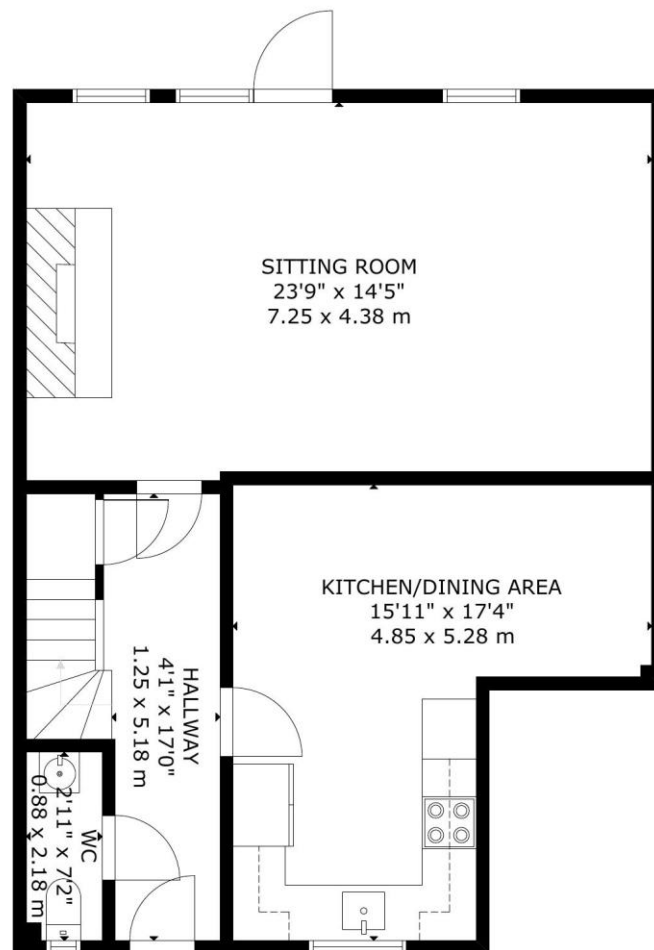
Visitor Parking Bays



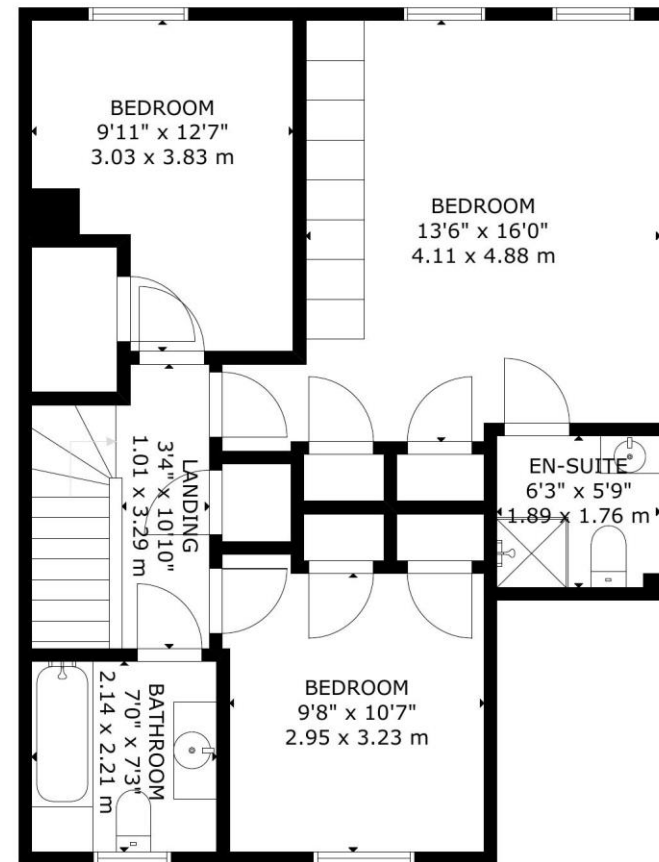








FLOOR 1



FLOOR 2

GROSS INTERNAL AREA  
 TOTAL: 128 m<sup>2</sup>/1,379 sq ft  
 FLOOR 1: 64 m<sup>2</sup>/691 sq ft, FLOOR 2: 64 m<sup>2</sup>/688 sq ft  
 SIZE AND DIMENSIONS ARE APPROXIMATE, ACTUAL MAY VARY