



KEAVER DRIVE, GU16

**KIER CHARLES**

SURREY • BERKSHIRE • HANTS

## KEAVER DRIVE, GU16

VIEW WITH KIER CHARLES SURREY.

A wonderful home positioned in a quiet location within excellent school catchment, overlooking a green and stunning far reaching views.

To the ground floor at his home enjoys a spacious welcoming hallway with doors to the WC, kitchen/dining room, 16ft x 14ft living room overlooking the garden.

To the first floor a master bedroom with fitted wardrobes and ensuite, two further bedrooms and family bathroom.

To front you overlook a green and there is a block paved driveway, access to the garage and rear access to a south facing, private rear garden, with a raised patio across the back with fantastic views and rear access into the garage. There are steps to a lawn offering excellent privacy with beautiful shrub and bush borders.

To fully appreciate the space, size and sought after location a personal tour with Kier Charles is highly recommended.

- **OVERLOOKING A GREEN**
- **THREE BEDROOMS**
- **EN-SUITE TO MASTER**
- **PRIVATE SOUTH FACING GARDEN**
- **GARAGE AND DRIVEWAY PARKING**
- **FAR REACHING VIEWS**
- **EXCELLENT SCHOOL CATCHMENTS**
- **CLOSE TO WOODLAND WALKS**
- **IMMACULATELY PRESENTED THROUGHOUT**

### PROPERTY INFORMATION

Postcode | **GU16 8AB**  
Tenure | **Freehold**  
Price | **£525,000**  
Viewing | **By appointment with Kier Charles**







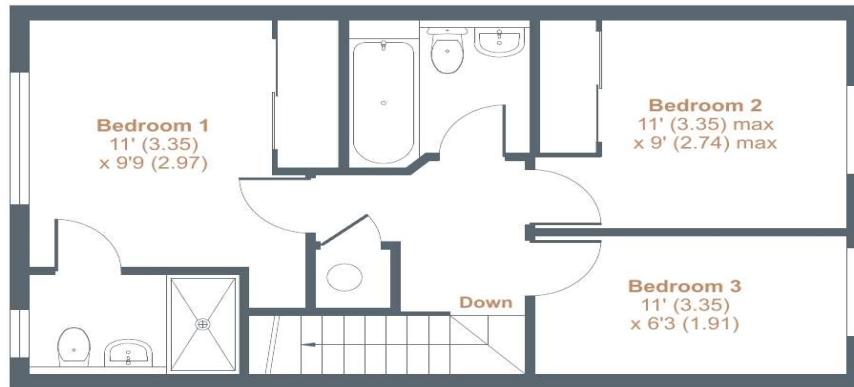
## Keaver Drive, Camberley, GU16

Approximate Area = 922 sq ft / 85.7 sq m

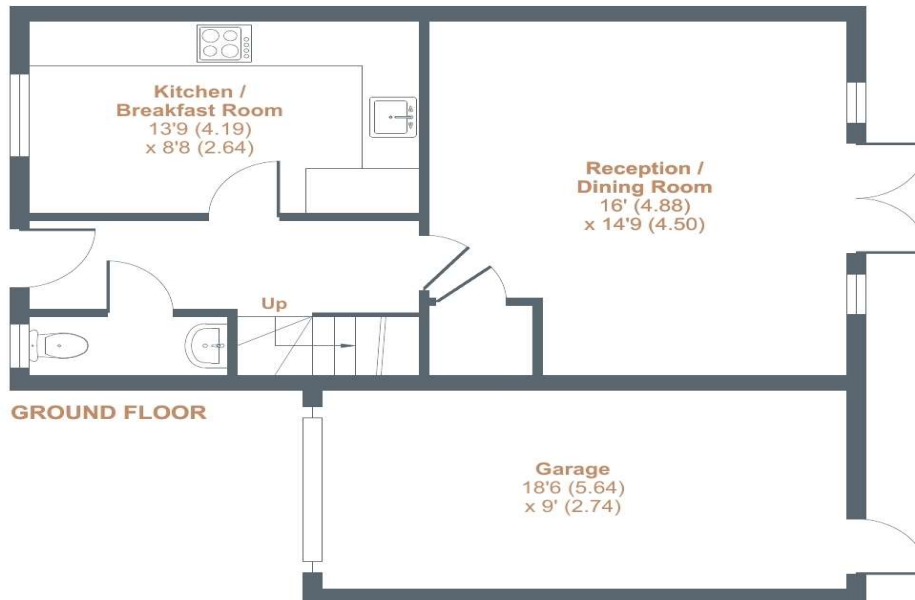
Garage = 167 sq ft / 15.5 sq m

Total = 1089 sq ft / 101.2 sq m

For identification only - Not to scale



FIRST FLOOR



GROUND FLOOR



Floor plan produced in accordance with RICS Property Measurement Standards incorporating International Property Measurement Standards (IPMS2 Residential). © n/checom 2023. Produced for Kier Charles Property Services Limited. REF: 1038661

KIER CHARLES  
PROPERTY SERVICES

### CONTACT INFORMATION:

Surrey: 01276 949789

Berkshire: 01344 513789

Hampshire: 01252 213789

[info@kiercharles.co.uk](mailto:info@kiercharles.co.uk)

# KIER CHARLES

SURREY • BERKSHIRE • HANTS