



Bathurst Street  
Hyde Park, W2

CHESTERTONS



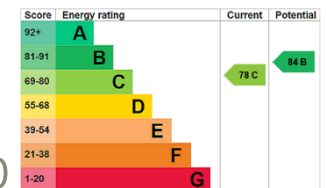


A beautifully presented south-facing two-bedroom apartment set on the second floor of an elegant period stucco-fronted building on Bathurst Street, W2. Served by a lift and offering approximately 856 sqft of well-balanced accommodation, the property is in good condition throughout. Both bedrooms feature en-suite bathrooms, complemented by a guest WC, while the separate kitchen and bright reception room with wood flooring create a warm and inviting living space. Residents also benefit from access to a communal patio area on the first floor - a peaceful outdoor space rarely found in such a central location.

Perfectly positioned close to Hyde Park, Connaught Village, and Paddington Station, the flat benefits from excellent transport links and easy access to a wealth of boutique shops, cafés, and restaurants. This stylish and light-filled apartment would make an ideal London home or an excellent pied-à-terre in one of the city's most sought-after locations.

- South-facing orientation
- Second floor (with lift)
- Period stucco building
- Approx. 856 sqft
- Two en-suite bedrooms
- Guest WC
- Separate fitted kitchen
- Wood flooring throughout
- Good overall condition
- Access to communal patio
- Close to Hyde Park
- Near Connaught Village

Asking Price £1,295,000

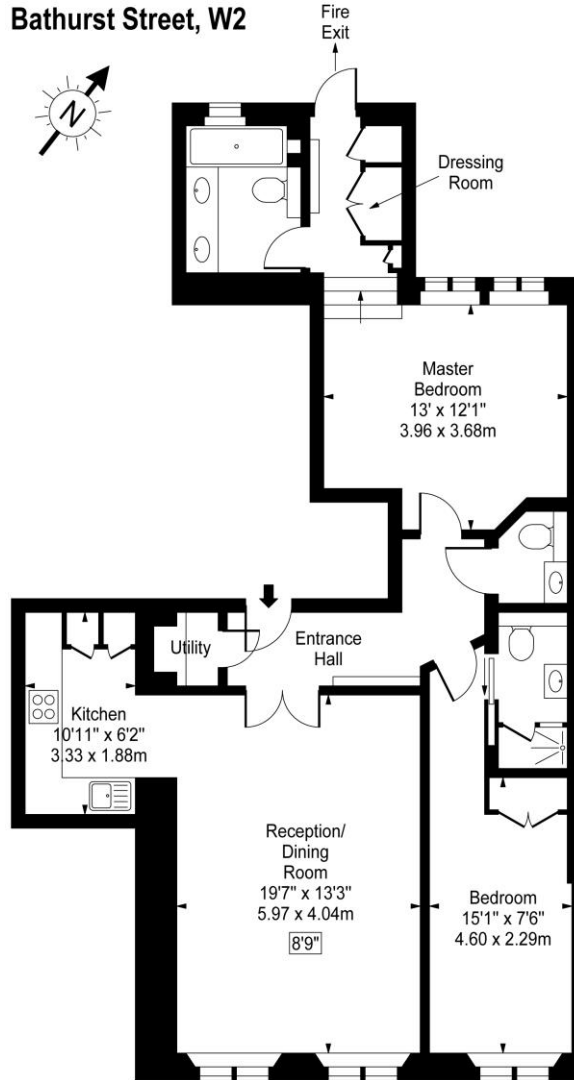


**Tenure:** Leasehold 129 years 2 months  
**Service Charge:** £7,769 per annum Including reserve fund contributions  
**Ground Rent:** None  
**Local Authority:** City of Westminster  
**Council Tax Band:** F

*Chestertons Hyde Park & Marylebone Sales*

40 Connaught Street  
 London  
 W2 2AB  
 hydepark@chestertons.co.uk  
 020 7298 5900  
 chestertons.co.uk

Bathurst Street, W2



Second Floor

Approx Gross Internal Area **856 Sq Ft - 79.52 Sq M**

For Illustration Purposes Only - Not To Scale

[www.goldlens.co.uk](http://www.goldlens.co.uk)

Ref. No. 006345M

Chesterton UK Services Limited trading as Chestertons for themselves and for the vendor of this property whose agents they are, give notice that (i) these particulars do not constitute any part of an offer or contract, (ii) all statements contained within these particulars are made without responsibility on the part of Chestertons or the vendor, (iii) whilst made in good faith, none of the statements contained within these particulars are to be relied upon as a statement or representation of fact, (iv) any intending purchasers must satisfy themselves by inspection or otherwise as to the correctness of each of the statements contained within these particulars, (v) the vendor does not make or give either Chestertons or any person in their employment any authority to make or give representation or warranty whatsoever in relation to this property. Wide angle lenses may be used. ©Copyright Chestertons | Chesterton UK Services Limited | Registered Office 40 Connaught Street, Hyde Park, London W2 2AB Registered Company Number 05334580.



This paper is 100% recyclable