



LOBELIA ROAD, GU24

KIER CHARLES
SURREY • BERKSHIRE • HANTS

LOBELIA ROAD, GU24

VIEW WITH KIER CHARLES SURREY.

A fully refurbished family home located in a sought-after location close to schools, shops, and parkland. Positioned on a corner plot enjoying ample parking for several vehicles and having a converted garage into a double office.

As you enter there is a welcoming hallway with access to a spacious living room, WC, snug, refitted kitchen, utility, and conservatory to the ground floor. To the first floor there is a master bedroom with refitted ensuite, complimented by a further three bedrooms and refitted family bathroom.

The rear garden receives a good amount of privacy and is laid to lawn with a large patio and access to the converted garage.

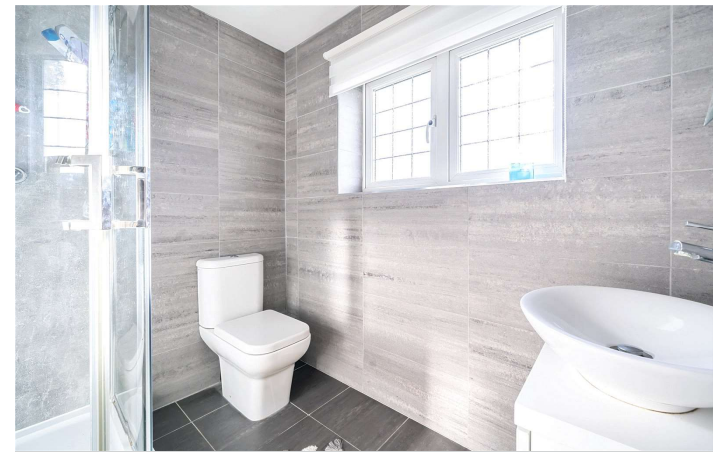
To fully appreciate the space, location, and excellent condition a personal tour with Kier Charles is highly recommended.

- **FOUR BEDROOMS**
- **TWO BATHROOMS**
- **CONSERVATORY**
- **FIVE RECEPTION ROOMS**
- **DOUBLE OFFICE SPACE**
- **CORNER PLOT**
- **EXCELLENT SCHOOL CATCHMENT**
- **SOUGHT AFTER LOCATION**
- **SHOPS AND PARKLAND NEARBY**
- **QUIET LOCATION**

PROPERTY INFORMATION

Postcode | **GU24 9SE**
Tenure | **Freehold**
Price | **O.I.E.O £825,000**
Viewing | **By appointment with Kier Charles**





Lobelia Road, Bisley, Woking, GU24

Approximate Internal Area = 1764 sq ft / 163.9 sq m

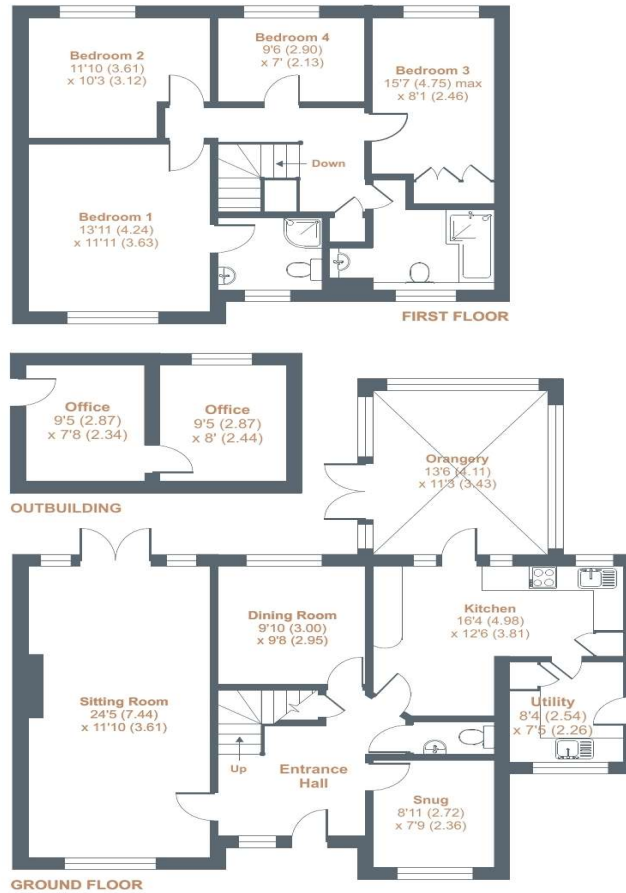
Approximate External Area = 2058 sq ft / 191.1 sq m

Outbuilding = 165 sq ft / 15.3 sq m

Total Internal Area = 1929 sq ft / 179.2 sq m

Total External Area = 2276 sq ft / 211.4 sq m

For identification only - Not to scale



Floor plan produced in accordance with RICS Property Measurement Standards incorporating International Property Measurement Standards (IPMS2 Residential). © nichecom 2024. Produced for Kier Charles Property Services Limited. REF: 1093676

KIER CHARLES
SURREY • BERKSHIRE • HANTS • LONDON

CONTACT INFORMATION:

Surrey: 01276 949789

Berkshire: 01344 513789

Hampshire: 01252 213789

info@kiercharles.co.uk

KIER CHARLES

SURREY • BERKSHIRE • HANTS