



PRIOR ROAD, GU15

KIER CHARLES

SURREY • BERKSHIRE • HANTS

PRIOR ROAD, GU15

VIEW SAFELY WITH OLIVER.

Positioned down a private lane elevated overlooking the wonderful 0.3 acre the home benefits from.

This wonderful four bedroom family home offers 2,423 sqft arranged over two floors and offers excellent potential to extend STPP.

To the ground floor there is a 20ft kitchen/breakfast room, study, 19ft reception room, dining room, conservatory and shower room.

To the first floor there is 13ft square master bedroom with ensuite bathroom, a further three bedrooms and family bathroom.

There is a double garage and ample parking in front of the garage and further parking behind the property.

The overall plot is 0.36 acre and the property is positioned towards the back of the plot however benefits from addition space to the rear as well as the large frontage.

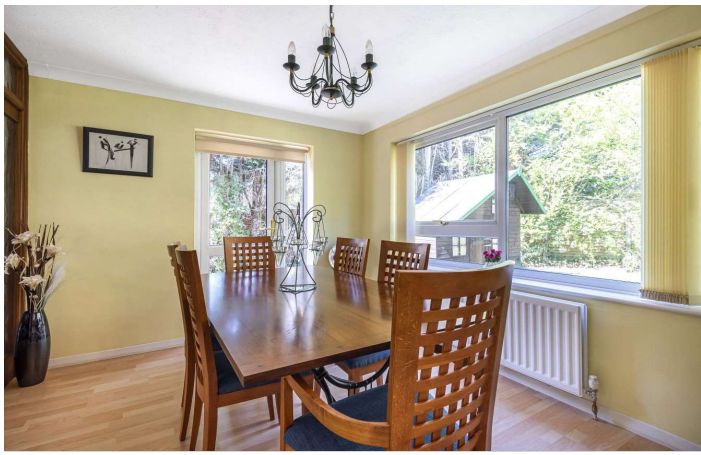
To fully appreciate the space, location and potential of this home a personal tour with Oliver is recommended.

- **PRIVATE 0.36 PLOT**
- **POTENTIAL TO EXTEND STP**
- **THREE RECEPTION ROOMS**
- **FOUR BEDROOMS**
- **TWO BATHROOMS**
- **GREAT SCHOOL CATCHMENTS**
- **DOUBLE GARAGE**

PROPERTY INFORMATION

Postcode | **GU15 1DB**
Tenure | **Freehold approximately 0years**
Price | **£800,000**
Viewing | **By appointment with Kier Charles**





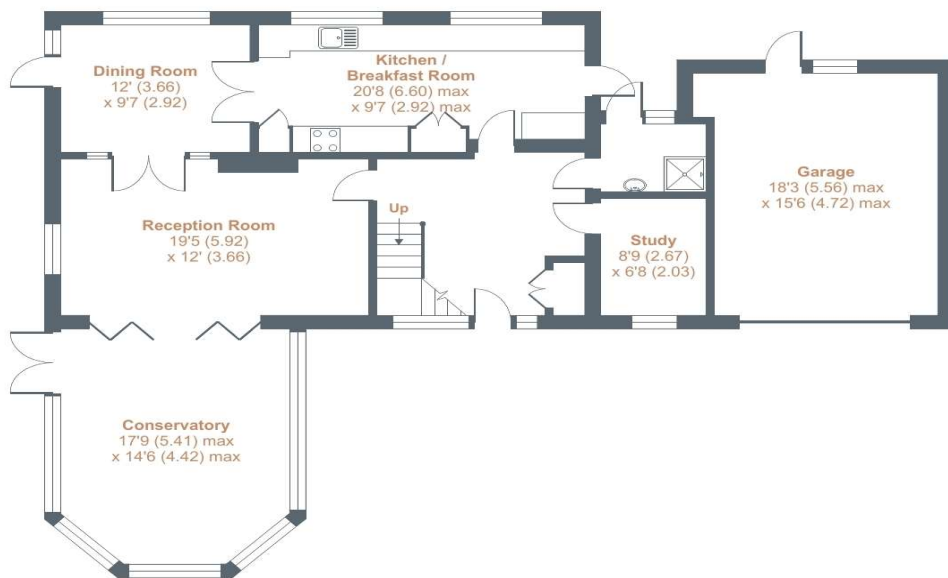
Prior Road, Camberley, GU15

Approximate External Area = 2423 sq ft / 225 sq m (includes garage)

For identification only - Not to scale



FIRST FLOOR



GROUND FLOOR



Floor plan produced in accordance with RICS Property Measurement Standards incorporating International Property Measurement Standards (IPMS2 Residential). © ncthecom 2022. Produced for Kier Charles Property Services Limited. REF: 839678



CONTACT INFORMATION:

Surrey: 01276 949789

Berkshire: 01344 513789

Hampshire: 01252 213789

info@kiercharles.co.uk

KIER CHARLES

SURREY • BERKSHIRE • HANTS