



— SIMUL MOVERE —



FREEHOLD GUIDE PRICE

£425,000

2 Pavy Close

Thatcham RG19 4GR



A wonderful, three-bedroom, detached property situated in the popular area of Kennet Lea. The house offers a bonus loft room, garage, and no onward chain.

- Kennet School catchment
- Loft room
- Garage
- Detached

- No onward chain
- Beautifully presented
- Southerly aspect garden



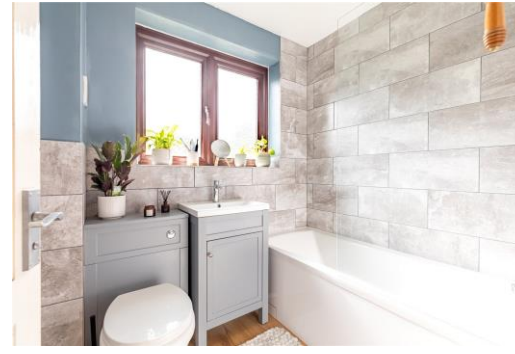
SITUATION

Thatcham is a market town that offers a range of shops, supermarkets, schools and the Nature Discovery Centre, as well as being a short drive away from Newbury which has an excellent range of leisure and entertainment facilities including, of course, Newbury Racecourse. Thatcham itself has its own railway station, benefitting from the direct line to London Paddington, and excellent road links via the A34 and M4 motorway.

DESCRIPTION

A beautifully presented, three-bedroom, detached home. The accommodation is set over three floors and makes the perfect family home. On the ground floor the accommodation comprises an entrance hallway with storage space for shoes and coats, large living room with a feature bay window letting in surplus light, a dining room, and modern kitchen. There are also patio doors leading onto to the conservatory and garden. On the first floor you will find three bedrooms, two of them boasting built-in storage, there is also a family bathroom suite. On the second floor there is an extra room with an en-suite, the floor is very bright and spacious due to the Velux windows.





OUTSIDE

Outside there is a good-sized driveway, a neatly kept front lawn and gravel area to the front. The beautiful rear garden is complete with a decking area, perfect for alfresco dining, as well as access to the garage.

SERVICES AND MATERIAL INFORMATION

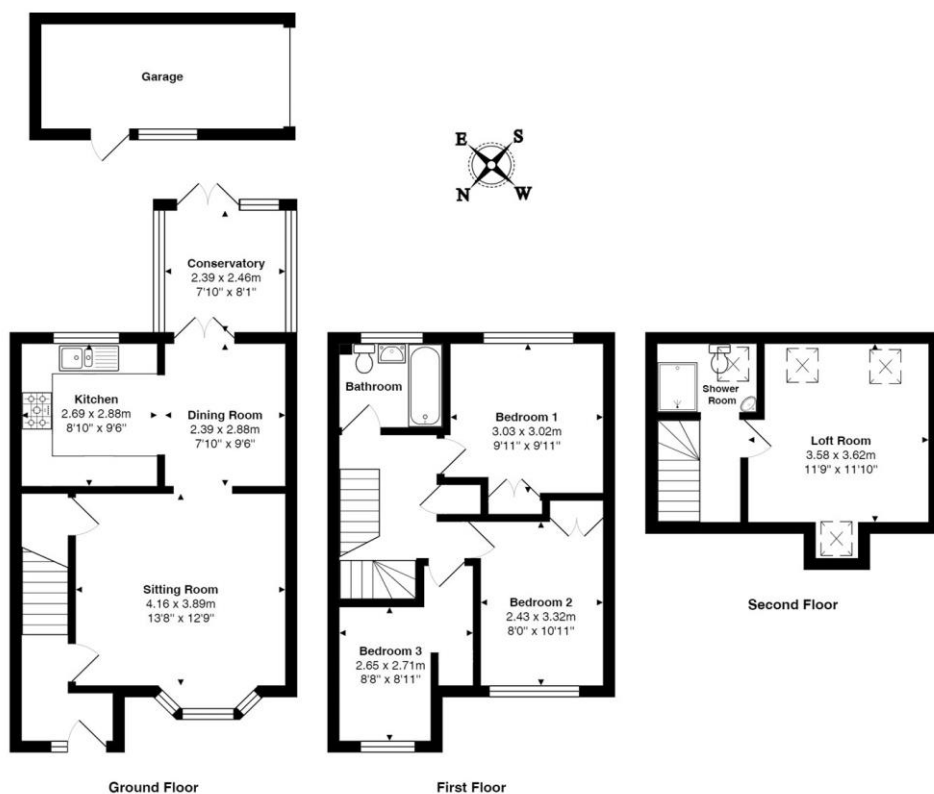
All mains services are connected and the property operates on gas fired central heating.

Council tax band: C

Energy efficiency rating: D



2 Pavy Close



Total Area: 103.9 m² ... 1118 ft² (excluding garage)
All measurements are approximate and for display purposes only



what3words:///debt.losses.increased



Jones Robinson
118 Bartholomew Street
Newbury
RG14 5DT

01635 35010
sales@jonesrobinson.co.uk
www.jonesrobinson.co.uk

If there are any queries in relation to these property particulars, please contact this office to check the information. No responsibility can be accepted for any expenses incurred by intending purchasers in inspecting properties which have been sold, let or withdrawn. The Jones Robinson Group and the vendors of this property give notice that:

1) The sales particulars are intended to provide accurate and reliable information regarding the property for the guidance of intending purchasers. Whilst all descriptions, reference to condition, dimensions, areas, and measurements are believed to be accurate any intending purchasers should not rely on them as statements of fact and must satisfy themselves by inspection as to their correctness. **2)** The particulars do not constitute part of an offer or contract with prospective purchasers. **3)** All curtains, carpets, blinds equipment, light fittings and fixtures are deemed to be removable by the Vendor unless specifically negotiated with the sale of the property. **4)** No person in the employment of the Jones Robinson Group has any authority to make or give representation or warranty whatsoever in relation to this property on behalf of the Jones Robinson Group, nor enter into any contract on behalf of the vendor. **5)** We offer a wide range of services through third party providers including solicitors, mortgage providers, EPC suppliers and other contractors. You are under no obligation to use these services and it is Your discretion whether You choose to deal with these providers or use Your own preferred supplier. Our mortgage provider pays us a referral fee, the amount of which varies depending on the individual mortgage, however, the average fee received by us is £223.50 per referral (based on total referrals across all Jones Robinson offices in 2023). Our recommended mortgage provider is FirstXtra. For referrals to our recommended conveyancing firm, the average referral fee is £407 per referral (based on total referrals across all Jones Robinson offices in 2023). Our recommended conveyancing firms are The Live Organisation and Angel Wilkins. Our contractors (including EPC providers) pay Us an average fee of £25 per referral (based on total Jones Robinson Group referrals in 2023). Full details of our referral fees are listed on our website.

