



PRIOR END, GU15

**KIER CHARLES**

SURREY • BERKSHIRE • HANTS

## PRIOR END, GU15

VIEW SAFELY WITH OLIVER.

THIS WONDERFUL FOUR-BEDROOM FAMILY HOME APPROACHING 2,000 SQFT ARRANGED OVER TWO FLOORS AND OFFERS EXCELLENT POTENTIAL TO EXTEND STPP.

To the ground floor there is a dual aspect living room, dining room, study and kitchen breakfast room. There is a utility with access into the garage and a w.c.

To the first floor there is a master bedroom with ensuite bathroom and fitted storage, a further three bedrooms and family bathroom.

The overall plot is 0.21 of an acre offering southerly aspect and good privacy. There is plenty of scope to extend (STP). There is a garage and ample parking to the front.

To fully appreciate the space, location and potential of this home a personal tour with Oliver is recommended.

- **POTENTIAL TO EXTEND STP**
- **THREE RECEPTION ROOMS**
- **FOUR BEDROOMS**
- **TWO BATHROOMS**
- **PRIVATE 0.25 PLOT**
- **EXCELLENT SCHOOL CATCHMENTS**

### PROPERTY INFORMATION

Postcode | **GU15 1JW**  
Tenure | **Freehold**  
Price | **£850,000**  
Viewing | **By appointment with Kier Charles**

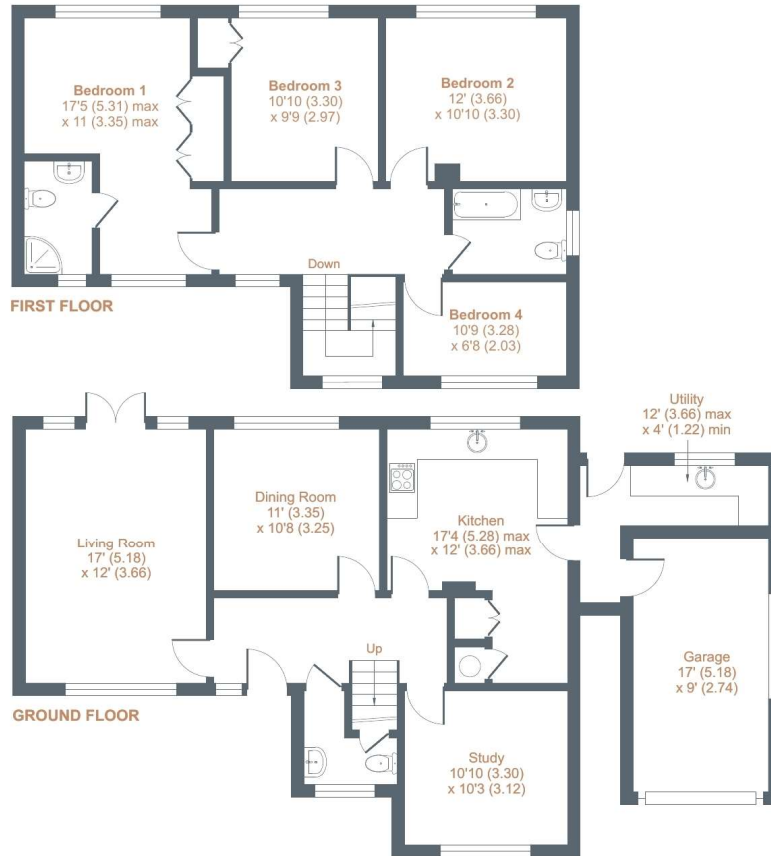




# Prior End, Camberley, GU15

Approximate External Area = 1994 sq ft / 185.2 sq m (includes garage)

For identification only - Not to scale



Floor plan produced in accordance with RICS Property Measurement Standards incorporating International Property Measurement Standards (IPMS2 Residential). © nichecom 2022. Produced for Kier Charles Property Services Limited. REF: 869447

KIER CHARLES  
PROPERTY SERVICES

## CONTACT INFORMATION:

Surrey: 01276 949789

Berkshire: 01344 513789

Hampshire: 01252 213789

[info@kiercharles.co.uk](mailto:info@kiercharles.co.uk)

# KIER CHARLES

SURREY • BERKSHIRE • HANTS