



3 Bedrooms



2 Bath/Shower Rooms



1 Reception Room



EPC Band D

Council Tax
Band: D £1,960.96 (2022/2023)
Local Authority
St Albans City & District Council

Deposit £2,423.05
Holding Deposit £484.61

 **ashtons**
for life's great moves



Verulam Road, St. Albans, AL3 4DA
£2,100 pcm

Verulam Road, St. Albans

A stunning furnished apartment in the very heart of the City centre, moments from the Cathedral.

- Beautifully Presented Duplex Apartment
- Dual Aspect Reception Room with Views Over St Albans
- Three Double Bedrooms
- Two Bathrooms
- Juliet Balcony
- City Centre Location & Close to St Albans Mainline Station

Description

This superb apartment is arranged over the upper two floors of a period building in the centre of St Albans.

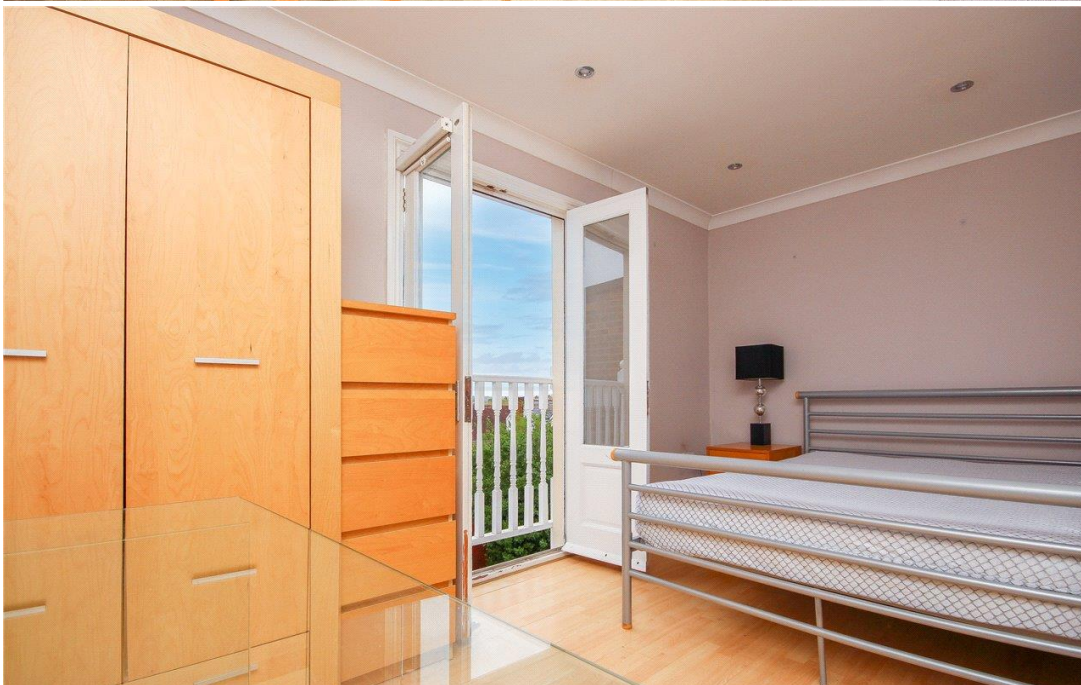
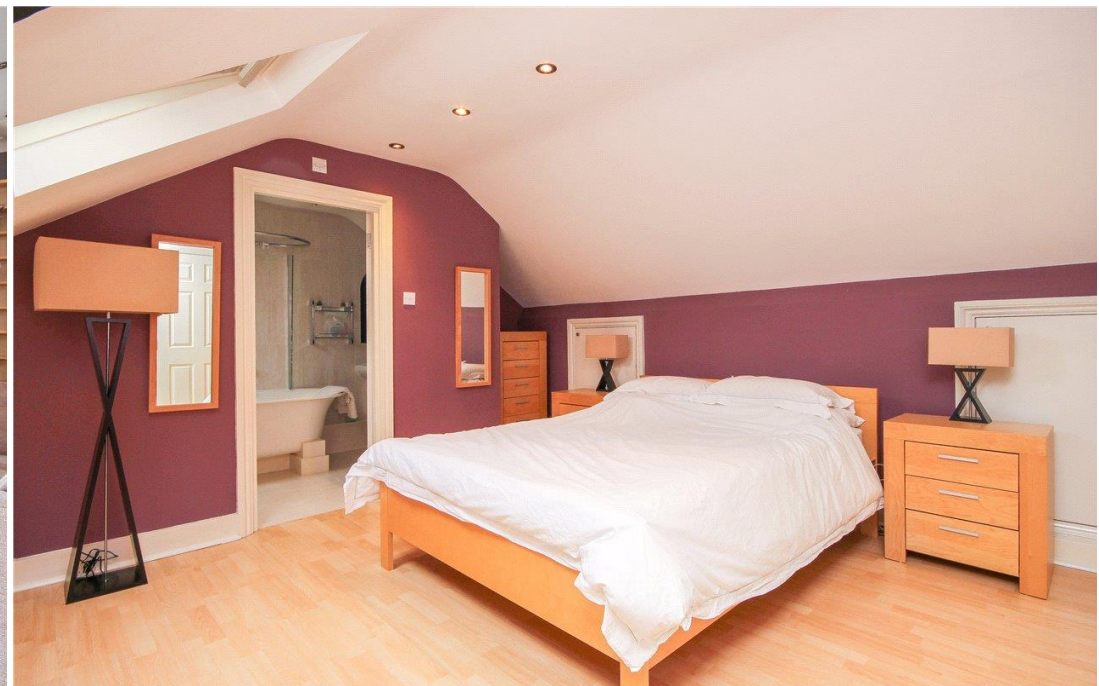
From the lobby, accessed via Verulam Road, stairs lead up to the first floor where there is a generously proportioned dual aspect reception room with ample space for living and dining and a large rear window giving lovely westerly views over St Albans. The open-plan kitchen is adjacent, and this is a well-equipped space with integrated appliances including dishwasher, oven and washing machine. To the rear is a bright double bedroom with Juliet balcony and serviced by a contemporary shower room. The stunning principal bedroom is located on the second floor. This bright space has generous storage provision including a walk-in wardrobe and is served by a stylish en-suite bathroom with free-standing bath.

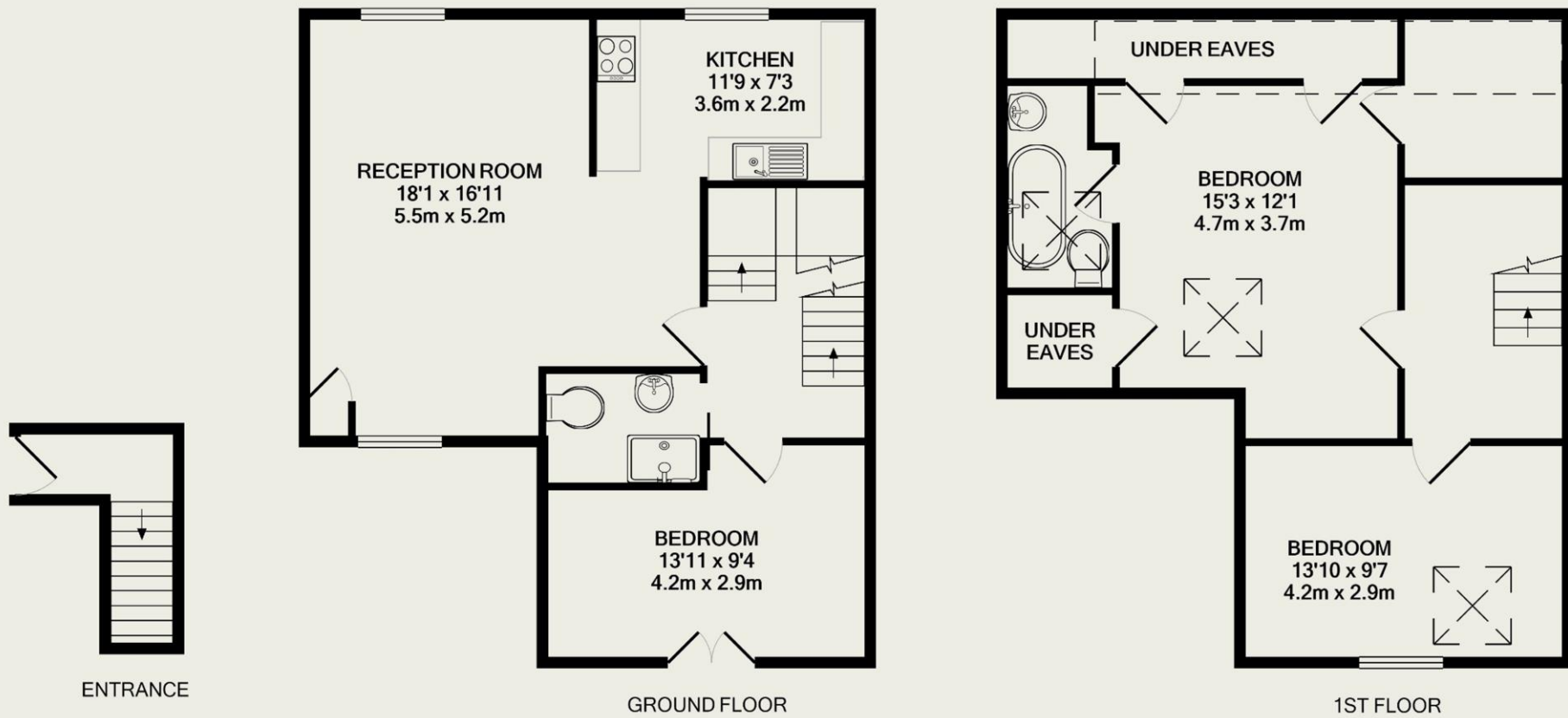
A further good sized double bedroom with a rooflight is also located on this floor.

Location

The apartment is situated in the heart of St Albans, with an extensive range of shops, restaurants and bars on the doorstep. Westminster Lodge and Verulamium Park are within easy reach and the mainline station with direct services to St Pancras is less than a mile away.







TOTAL APPROX. FLOOR AREA 1185 SQ.FT. (110.1 SQ.M.)

This floor plan is for illustrative purposes only. The measurement and position of each element is approximate and must be viewed as such