

17 Chestnut Avenue, Southbourne,
Bournemouth, BH6 3SP

Guide Price **£750,000**



9

Bedrooms



4

Living



2

Bathroom/Ensuite



Y

Parking/Garage

EST
1992

THE PROPERTY PROFESSIONALS
Slades Estate Agents

Slades

An ideal project for those wishing to live by the sea!

Built in 1906, this substantial family home which oozes character and charm is now in need of modernisation.

Offering over 2800 square foot of accommodation set over three floors to include 9 bedrooms and 4 large receptions; this wonderful home would be ideal for those looking for a project and personalise/modernise to taste.

Set in a most convenient location, twixt Southbourne Grove and 7 miles of sandy beaches, this really is a super opportunity for those looking for a large home in a great location!

As soon as you enter the house, it soon becomes clear that everything within its four walls is big! From the high and ornately coved ceilings to the expansive rooms this really is a very big house!

On the ground floor, there are four large reception rooms, along with a kitchen, ground floor shower room and WC. There is definitely scope for remodelling if

required.

Stairs lead from the entrance hallway to the first floor landing where five double bedrooms and a shower room with a separate WC can be found.

The second-floor accommodation offers four further bedrooms, all are well proportioned although for most this space would be remodelled to create one large suite or two big double bedrooms.

Externally, there is a garden to the rear, which fronts Pine Avenue, and a driveway offering off road parking. There is also a small section of garden to the front.

Offered for sale with no onward chain, we are expecting interest to be high, so don't delay and book your inspection today!



KEY POINTS

Substantial family home

9 bedrooms

In need of modernisation

Lots of character

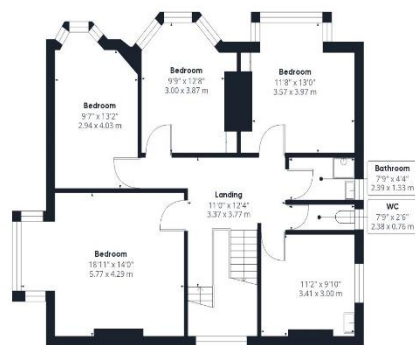
Moments from sandy beaches

Garden and driveway

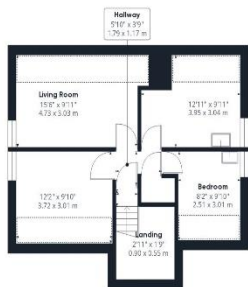
No onward chain



Ground Floor



Floor 1



Floor 2

Approximate total area⁽¹⁾

2750.87 ft²
255.56 m²

Reduced headroom

126.15 ft²
11.72 m²

(1) Excluding balconies and terraces

Reduced headroom
(below 1.5m/4.92ft)

While every attempt has been made to ensure accuracy, all measurements are approximate, not to scale. This floor plan is for illustrative purposes only.

GIRAFFE360



The Consumer Protection from Unfair Trading Regulations 2008 (CPRs). These details are for guidance only and complete accuracy cannot be guaranteed. If there is any point, which is of particular importance, verification should be obtained. They do not constitute a contract or part of a contract. All measurements are approximate. No guarantee can be given with regard to planning permissions or fitness for purpose. No apparatus, equipment, fixture or fitting has been tested. Items shown in photographs are NOT necessarily included. Interested Parties are advised to check availability and make an appointment to view before travelling to see a property.

THE PROPERTY PROFESSIONALS Christchurch | Southbourne | Highcliffe | Bransgore



Slades - Southbourne 51 Southbourne Grove, Bournemouth, Dorset, BH6 3C
01202 428555 | sales@sladessouthbourne.co.uk
Website www.sladeshomes.co.uk

