



PARK ROAD, GU15

**KIER CHARLES**

SURREY • BERKSHIRE • HANTS

## PARK ROAD, GU15

VIEW WITH KIER CHARLES SURREY.

NO ONWARD CHAIN.

A spacious family home offering a flexible layout over two floors.

Positioned in the heart of Camberley offering easy reach to sought after Schools, shops, train station and access to major road links to London.

The property enjoys a spacious living/dining room, Conservatory, 14ft kitchen/breakfast room, utility, wc and bedroom/reception room with refitted ensuite shower.

The first floor offers a master bedroom with ensuite bathroom, three further bedrooms and refitted shower room.

The rear garden offers excellent privacy and is mainly laid to lawn and fully enclosed. The front offers ample parking and access to a single garage with power and light.

To fully appreciate the flexible space, location and condition a personal tour with Kier Charles is highly recommended.

- **FOUR/FIVE BEDROOMS**
- **THREE BATHROOMS**
- **TWO RECEPTION ROOMS**
- **REFITTED KITCHEN**
- **PRIVATE REAR GARDEN**
- **TOWN CENTRE LOCATION**
- **NO CHAIN COMPLICATIONS**

### PROPERTY INFORMATION

Postcode | **GU15 2LL**  
Tenure | **Freehold**  
Price | **£750,000**  
Viewing | **By appointment with Kier Charles**

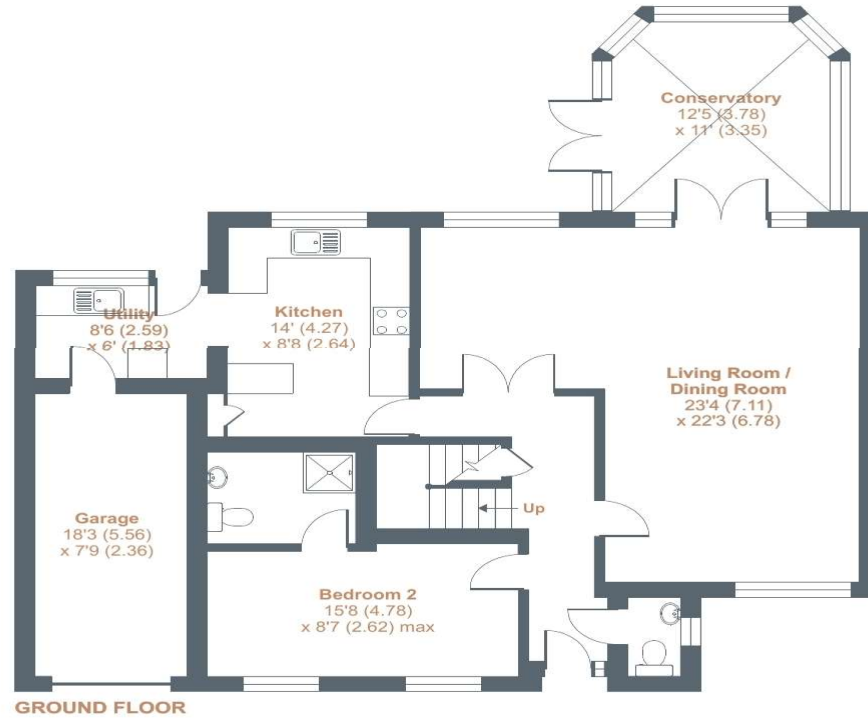




# Park Road, Camberley, GU15

Approximate External Area = 2262 sq ft / 210.1 sq m (includes garage)

For identification only - Not to scale



Floor plan produced in accordance with RICS Property Measurement Standards incorporating International Property Measurement Standards (IPMS2 Residential). © nitchecom 2022. Produced for Kier Charles Property Services Limited. REF: 926180

KIER CHARLES  
PROPERTY SERVICES

## CONTACT INFORMATION:

Surrey: 01276 949789

Berkshire: 01344 513789

Hampshire: 01252 213789

[info@kiercharles.co.uk](mailto:info@kiercharles.co.uk)

# KIER CHARLES

SURREY • BERKSHIRE • HANTS