



ANGERS CLOSE, GU15

KIER CHARLES

SURREY • BERKSHIRE • HANTS

ANGERS CLOSE, GU15

VIEW WITH KIER CHARLES SURREY.

A wonderful terraced home positioned in a quiet cul-de-sac location on the ever popular wellington park development.

The property boasts two double bedrooms with ensuite to master and family bathroom to the first floor. The ground floor enjoys entrance hall with WC, a modernised kitchen/dining room with access to the garden and large living room.

The rear garden is very private, offering plenty of patio space perfect for al fresco dining.

There is two allocated parking spaces, easy reach to local shops, playing fields & the Chobham ridges offering a tranquil place to live.

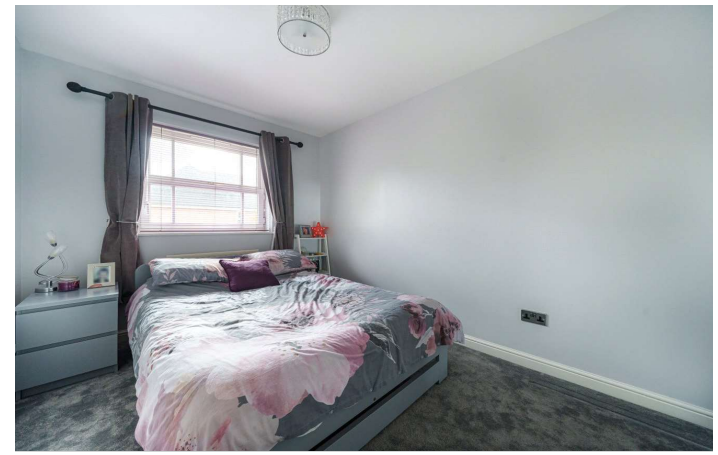
To fully appreciate the space, location and condition of this home a personal with Kier Charles is highly recommended to avoid disappointment.

- **QUIET CUL-DE-SAC**
- **KITCHEN/DINING ROOM**
- **TWO DOUBLE BEDROOMS**
- **TWO ALLOCATED PARKING SPACES**
- **EN-SUITE TO MASTER**
- **PRIVATE REAR GARDEN**
- **NO ONWARD CHAIN**

PROPERTY INFORMATION

Postcode | **GU15 1PU**
Tenure | **Freehold**
Price | **£375,000**
Viewing | **By appointment with Kier Charles**

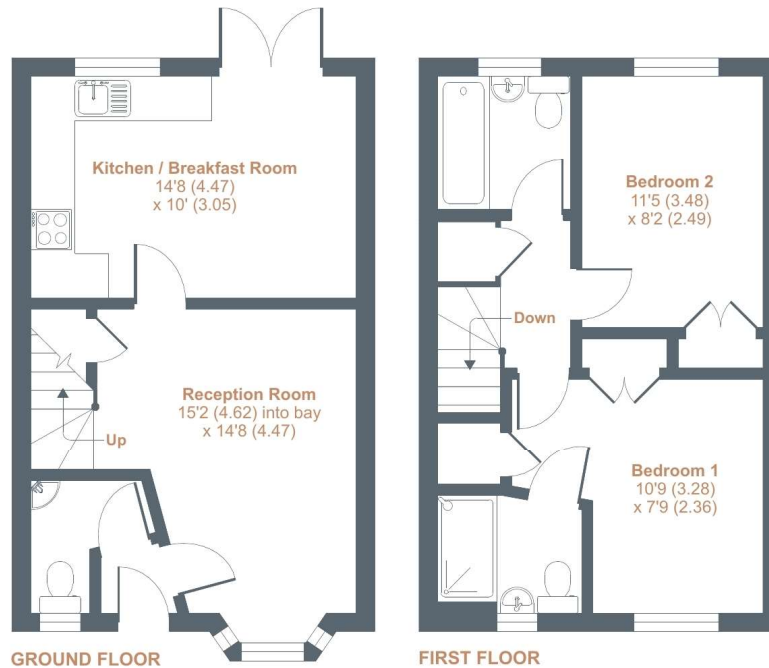




Angers Close, Camberley, GU15

Approximate External Area = 855 sq ft / 79.4 sq m

For identification only - Not to scale



Floor plan produced in accordance with RICS Property Measurement Standards incorporating International Property Measurement Standards (IPMS2 Residential). © nichecom 2023. Produced for Kier Charles Property Services Limited. REF: 969216

KIER CHARLES
PROPERTY SERVICES

CONTACT INFORMATION:

Surrey: 01276 949789

Berkshire: 01344 513789

Hampshire: 01252 213789

info@kiercharles.co.uk

KIER CHARLES

SURREY • BERKSHIRE • HANTS