



LOWLANDS ROAD, GU17

KIER CHARLES

SURREY • BERKSHIRE • HANTS

LOWLANDS ROAD, GU17

VIEW WITH KIER CHARLES HAMPSHIRE.

A beautiful period property that has been extended and sympathetically modernised throughout to maintain many of the character features whilst incorporating modern fittings

The ground floor has a welcoming entrance hall, leading through to a reception room which features a wonderful bay window. Open plan kitchen diner has been refitted to a very high standard with French doors giving you access to the large rear garden.

On the first floor there is two double bedrooms and a luxurious family bathroom.

The rear garden has two patio areas as well as a decking area which are perfect for Alfresco dining along with laid lawn bordered by flower beds and mature shrubbery and trees.

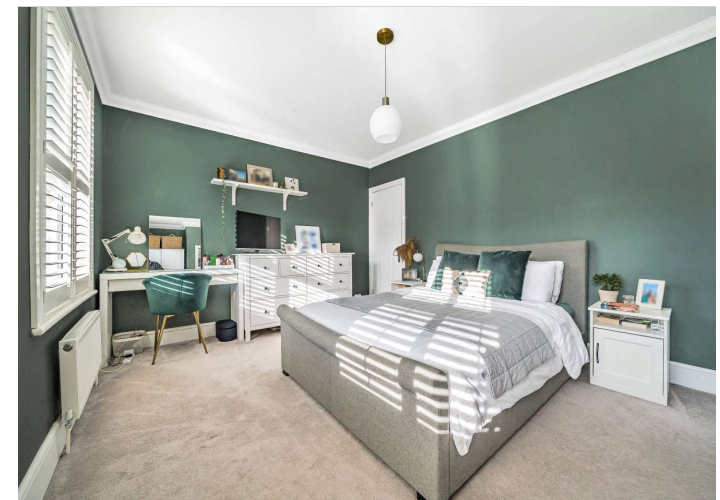
To fully appreciate the character, condition and sought after location a personal tour with Kier Charles would be highly recommended.

- **CHARACTER PROPERTY**
- **REFURBISHED THROUGHOUT**
- **TWO DOUBLE BEDROOMS**
- **OPEN PLAN KITCHEN/DINING AREA**
- **LARGE PRIVATE REAR GARDEN**
- **SOUGHT AFTER LOCATION**

PROPERTY INFORMATION

Postcode | **GU17 0AL**
Tenure | **Freehold**
Price | **£435,000**
Viewing | **By appointment with Kier Charles**

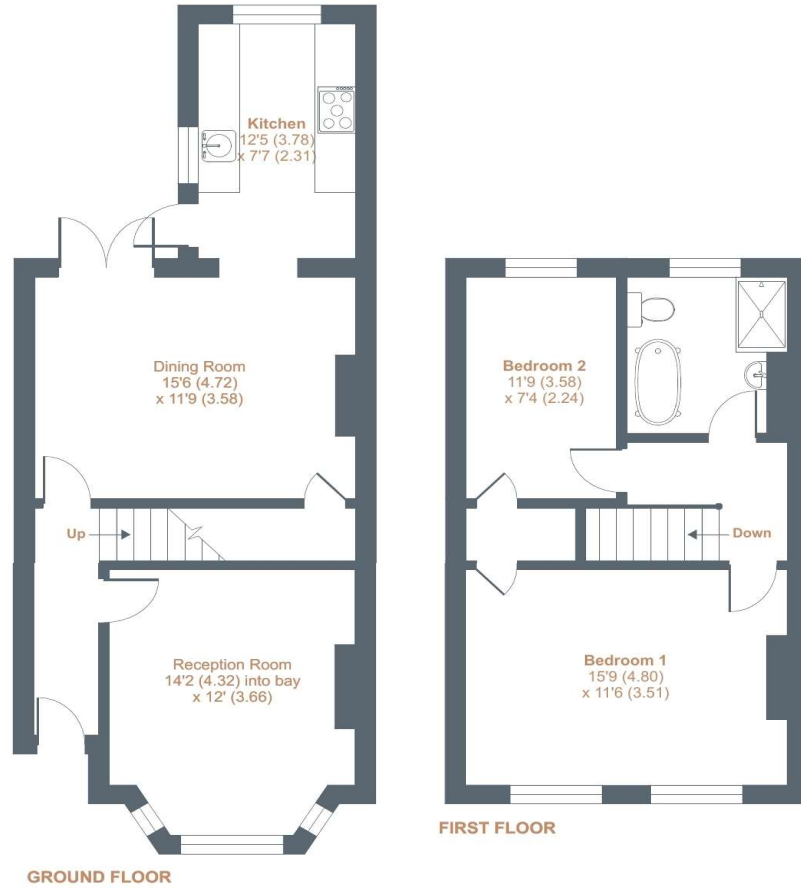




Lowlands Road, Blackwater, Camberley, GU17

Approximate External Area = 1174 sq ft / 109 sq m

For identification only - Not to scale



Floor plan produced in accordance with RICS Property Measurement Standards incorporating International Property Measurement Standards (IPMS2 Residential). © ncbcom 2023.

CONTACT INFORMATION:

Surrey: 01276 949789

Berkshire: 01344 513789

Hampshire: 01252 213789

info@kiercharles.co.uk

KIER CHARLES

SURREY • BERKSHIRE • HANTS