



MILLHOLME WALK, GU15

**KIER CHARLES**

SURREY • BERKSHIRE • HANTS

## MILLHOLME WALK, GU15

VIEW WITH KIER CHARLES SURREY.

A lovely three bedroom property positioned in a highly sought after location in Heatherside, Camberley.

Offering easy reach to shops and highly sought after schools and close to a nearby park and woodland walks the location is perfect.

Offering parking to the rear and garage in block.

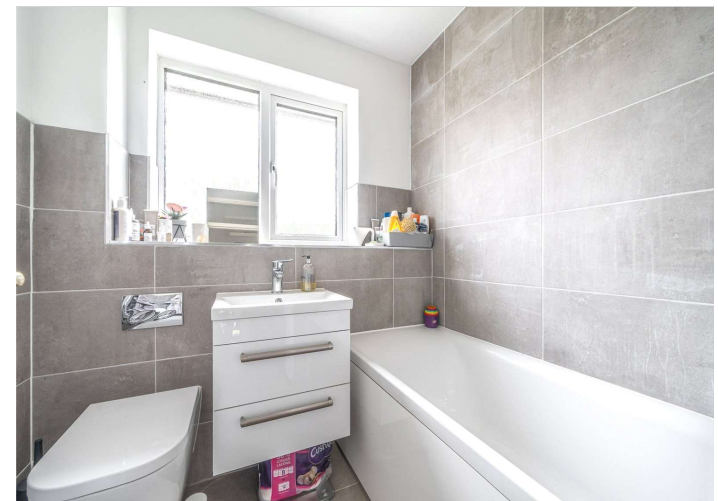
To fully appreciate the space, location and convenience this home offers a personal tour with Kier Charles is highly recommended.

- **THREE BEDROOMS**
- **REFITTED BATHROOM**
- **GARAGE IN BLOCK**
- **PARKING BY THE GARAGE**
- **CLOSE TO SOUGHT AFTER SCHOOLS**
- **WALKING DISTANCE TO SHOPS**
- **CLOSE TO PARKLAND & WOODLAND WALKS**
- **EASY COMMUTER LINKS TO LONDON**

### PROPERTY INFORMATION

Postcode | **GU15 1RY**  
Tenure | **Freehold**  
Price | **£365,000**  
Viewing | **By appointment with Kier Charles**

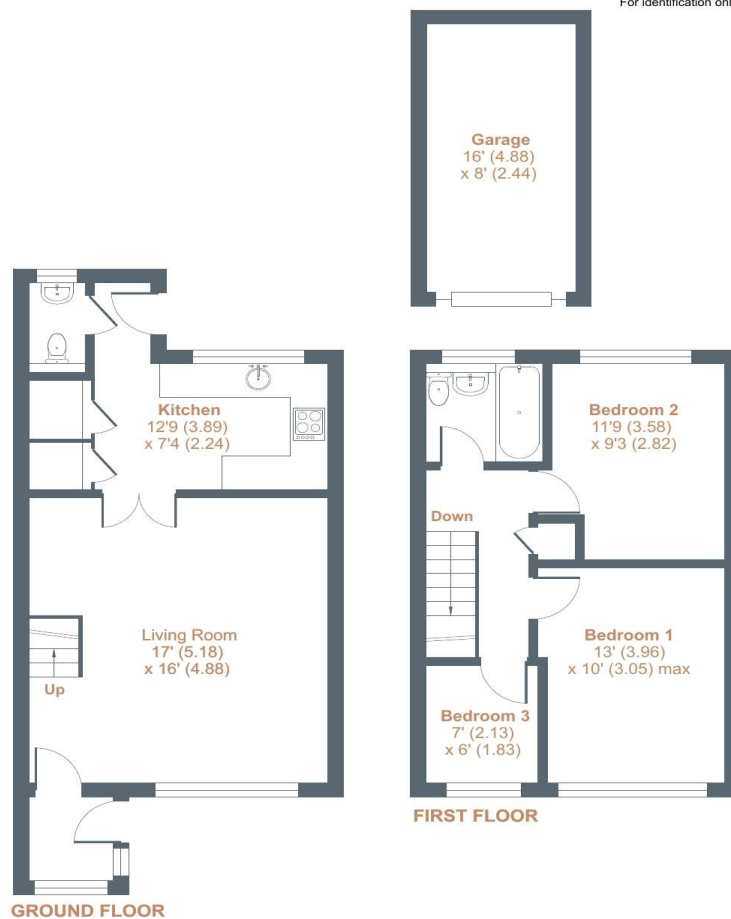




## Millholme Walk, Camberley, GU15

Approximate Internal Area = 858 sq ft / 79.7 sq m  
Approximate External Area = 1018 sq ft / 94.5 sq m  
Garage = 128 sq ft / 11.8 sq m  
Total Internal Area = 986 sq ft / 91.5 sq m  
Total External Area = 1189 sq ft / 110.4 sq m

For identification only - Not to scale



Floor plan produced in accordance with RICS Property Measurement Standards incorporating International Property Measurement Standards (IPMS2 Residential). © nichecom 2024. Produced for Kier Charles Property Services Limited. REF: 1139616

**KIER CHARLES**  
SURREY • BERKSHIRE • HANTS • LONDON

### CONTACT INFORMATION:

Surrey: 01276 949789

Berkshire: 01344 513789

Hampshire: 01252 213789

[info@kiercharles.co.uk](mailto:info@kiercharles.co.uk)

# KIER CHARLES

SURREY • BERKSHIRE • HANTS