



CASTLE ROAD, GU15

**KIER CHARLES**

SURREY • BERKSHIRE • HANTS

## CASTLE ROAD, GU15

VIEW WITH KIER CHARLES SURREY.

A highly sought after family home positioned in a cul de sac offering easy reach to sought after Schools and Camberley town centre.

Offering a side plot with excellent potential to extend STPP this beautiful home also enjoys a sizable frontage and extremely private rear garden.

To the ground floor there is a living room, conservatory, dining room, refitted kitchen with quartz worktops, utility, wc and double garage.

The first floor offers a master suite with dressing room and ensuite, a further three bedrooms and family bathroom.

The home is in good decorative order and rarely does a fantastic opportunity to purchase come along.

To fully appreciate the space, condition and further potential a personal tour with Kier Charles is highly recommended.

- **FOUR BEDROOMS**
- **TWO BATHROOMS**
- **THREE RECEPTION ROOMS**
- **CUL DE SAC LOCATION**
- **CARRIAGE DRIVEWAY**
- **EXCELLENT SCHOOL CATCHMENT**
- **FANTASTIC POTENTIAL TO EXTEND STPP**
- **SOUGHT AFTER LOCATION**

### PROPERTY INFORMATION

Postcode | **GU15 2DS**  
Tenure | **Freehold**  
Price | **£850,000**  
Viewing | **By appointment with Kier Charles**







## Castle Road, Camberley, GU15

Approximate Internal Area = 1837 sq ft / 170.6 sq m

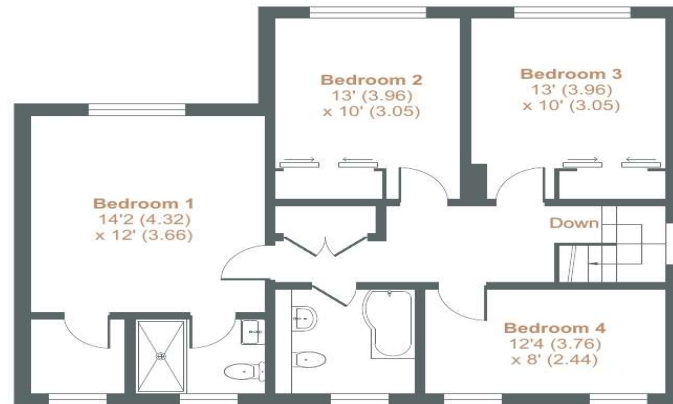
Approximate External Area = 2067 sq ft / 192 sq m

Garage = 281 sq ft / 26.1 sq m

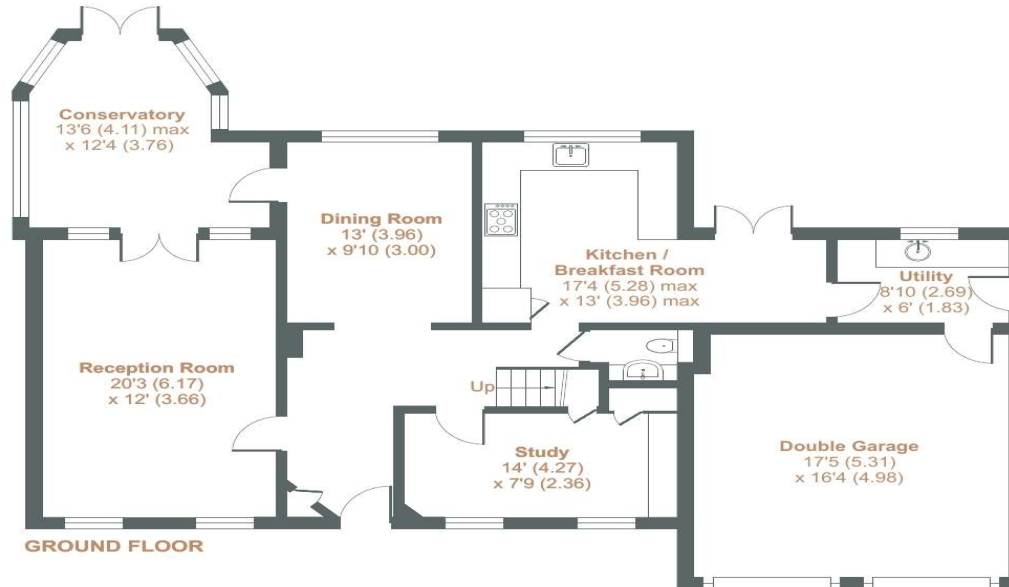
Total Internal Area = 2118 sq ft / 196.7 sq m

Total External Area = 2393 sq ft / 222.2 sq m

For identification only - Not to scale



FIRST FLOOR



GROUND FLOOR



Certified  
Property  
Measurer

Floor plan produced in accordance with RICS Property Measurement Standards incorporating International Property Measurement Standards (IPMS2 Residential). © n\checon 2024. Produced for Kier Charles Property Services Limited. REF: 1097327

KIER CHARLES

SURREY • BERKSHIRE • HANTS • LONDON

### CONTACT INFORMATION:

Surrey: 01276 949789

Berkshire: 01344 513789

Hampshire: 01252 213789

[info@kiercharles.co.uk](mailto:info@kiercharles.co.uk)

# KIER CHARLES

SURREY • BERKSHIRE • HANTS