



BROOKWOOD FARM DRIVE, GU21

KIER CHARLES

SURREY • BERKSHIRE • HANTS

BROOKWOOD FARM DRIVE, GU21

VIEW SAFELY WITH KIER.

BROOKWOOD FARM THE LUXURIOUS EX SHOW HOME BUILT BY THE AWARD WINNING CALA HOMES IN 2016.

WALKING DISTANCE TO BROOKWOOD STATION.

This family home has been beautifully designed to a high quality specification and with spacious interiors, they provide the perfect canvas for creativity and individuality.

Offering an external finish inspired by and sympathetic to their surroundings, you will find just as much character and personality on the inside. Generous flowing spaces are more inviting, while the finish and specification contain many unexpected touches that will make your life just that little bit easier.

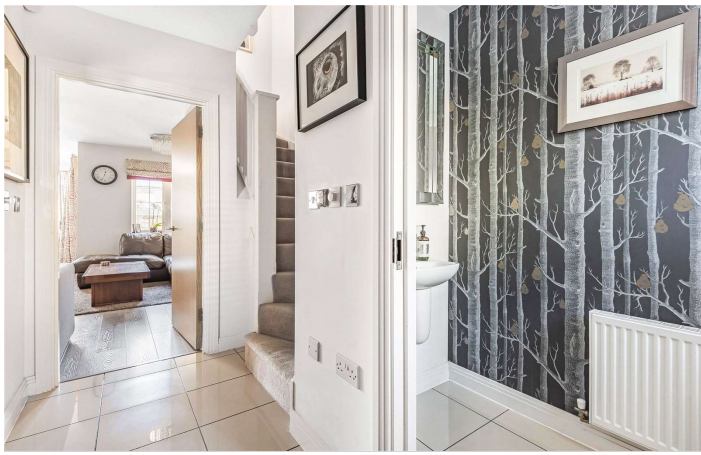
This popular development is situated on the fringe of Knaphill village and is surrounded by woodland and open spaces. Whilst also benefiting from fantastic commuter links, local schools, Sainsburys and an array of amenities in the nearby towns of Woking & Guildford

- **FOUR BEDROOMS**
- **TWO BATHROOMS**
- **EX SHOW HOME BUILT BY CALA**
- **LUXURY KITCHEN**
- **STUNNING LIVING/DINING ROOM**
- **LANDSCAPED REAR GARDEN**
- **DRIVEWAY AND GARAGE**

PROPERTY INFORMATION

Postcode | **GU21 2FT**
Tenure | **Freehold approximately 0years**
Price | **£550,000**
Viewing | **By appointment with Kier Charles**





Brookwood Farm Drive, Knaphill, Woking, GU21



Approximate Area = 1129 sq ft / 104.8 sq m
Limited Use Area(s) = 38 sq ft / 3.5 sq m
Outbuilding = 220 sq ft / 20.4 sq m
Total = 1387 sq ft / 134.9 sq m

For identification only - Not to scale

Denotes restricted
head height



Floor plan produced in accordance with RICS Property Measurement Standards incorporating International Property Measurement Standards (IPMS2 Residential). © nctechcom 2021. Produced for Kier Charles Property Services Limited. REF: 686311

KIER CHARLES
PROPERTY SERVICES

CONTACT INFORMATION:

Surrey: 01276 949789

Berkshire: 01344 513789

Hampshire: 01252 213789

info@kiercharles.co.uk

KIER CHARLES

SURREY • BERKSHIRE • HANTS