



jones robinson

— SIMUL MOVERE —



FREEHOLD GUIDE PRICE

£435,000

10 Oak Tree Road

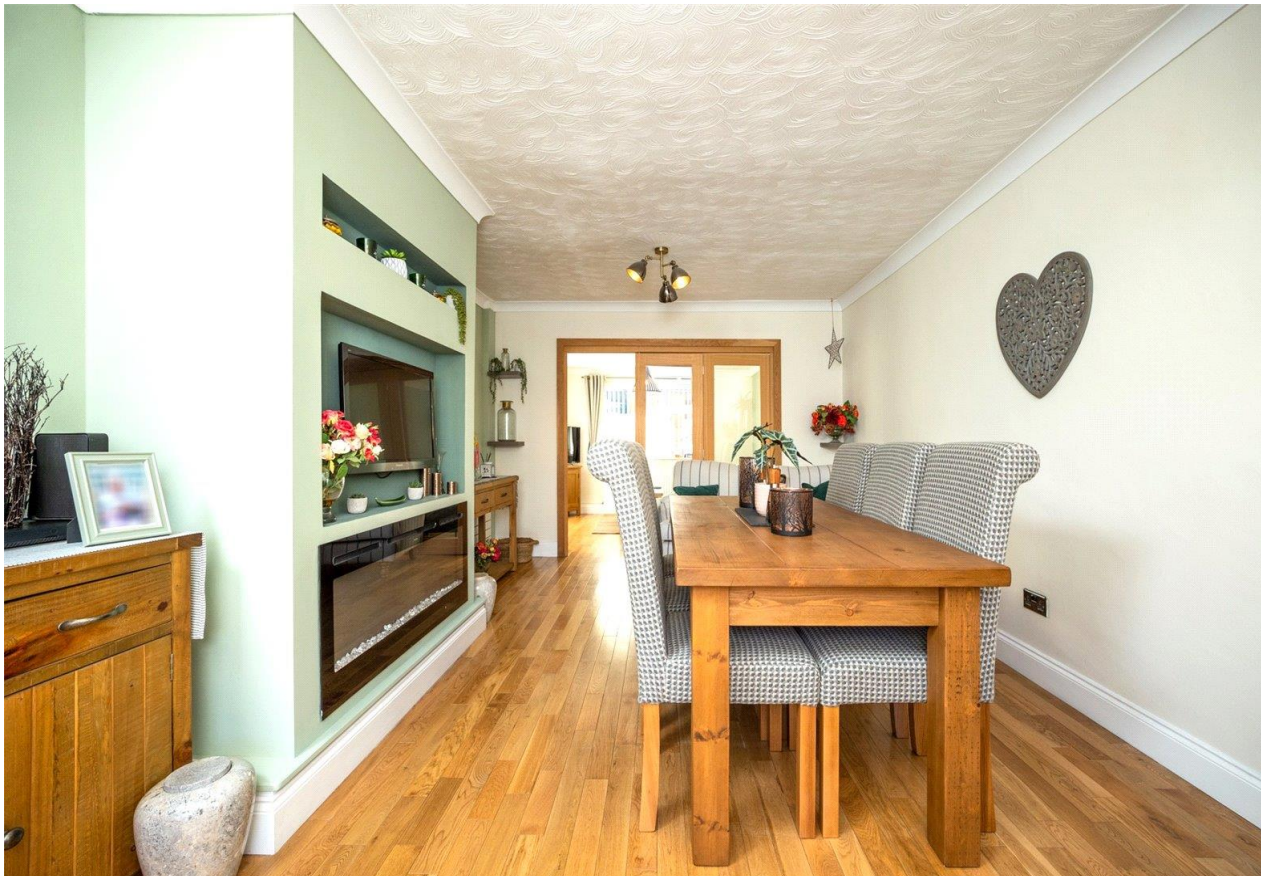
Thatcham RG19 4QP



A stunning semi-detached property with a lot to offer, including three reception rooms, two bathrooms, three bedrooms and a fantastic south-facing garden with workshop and storage sheds.

- Semi-detached
- Three reception rooms
- Re-fitted kitchen
- Re-fitted bathroom

- Newly re-fitted wet room
- Workshop
- Lovely south-facing garden
- Driveway parking



SITUATION

Thatcham is a market town that offers a range of shops, supermarkets, schools and the Nature Discovery Centre, as well as being a short drive away from Newbury which has an excellent range of leisure and entertainment facilities including, of course, Newbury Racecourse. Thatcham itself has its own railway station, benefitting from the direct line to London Paddington, and excellent road links via the A34 and M4 motorway.

DESCRIPTION

A beautifully presented semi-detached home with a bright and airy entrance hall, leading onto the main reception room with bi-fold doors onto the dining room. The kitchen has been completely re-fitted with a great range of wall and base units. The property benefits from a pocket door that cleverly conceals yet another reception room, wet room, and internal door to the garage. To the first floor there are three fantastic bedrooms with the main bedroom having a great range of fitted wardrobes and a shower room.





OUTSIDE

The property is approached via a block paved driveway which can accommodate several vehicles, a small gravel area and a raised bed to the front. To the rear is a lovely south-facing garden with low maintenance astro turf lawn, well stocked flower beds, summerhouse and a great workshop with an adjoining area which has previously been used to house a hot tub, all with power and light. There is a further garden shed tucked away in the far corner.

SERVICES AND MATERIAL INFORMATION

All mains services are connected and the property operates on gas fired central heating.

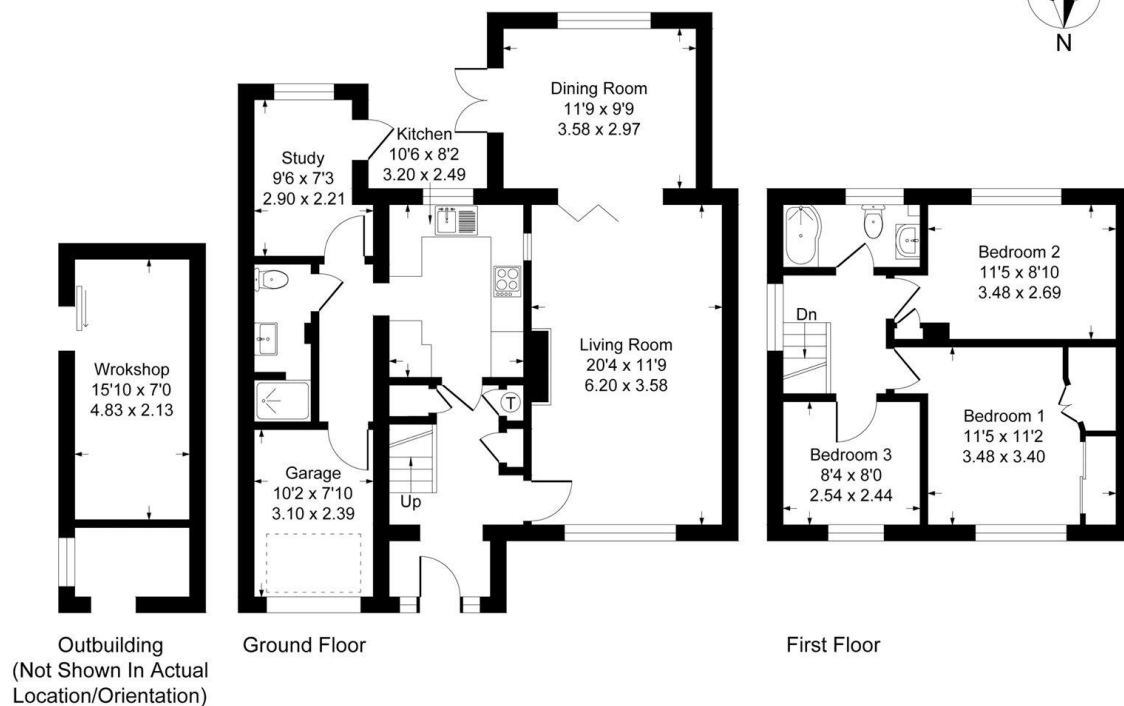
Council tax band: C

Energy efficiency rating: C



10 Oak Tree

Approximate Gross Internal Area
119.7 sq m / 1288 sq ft



DIRECTIONS

From the Robin Hood roundabout head east on the A4 signposted Thatcham. Continue along the A4 until reaching Wyevale Garden Centre roundabout taking the third exit. As you pass The Broadway on your right, turn right onto The Moors. At the second mini roundabout turn left onto Station Road, take the third right turning into Oak Tree Road.



Jones Robinson
118 Bartholomew Street
Newbury
RG14 5DT

01635 35010
sales@jonesrobinson.co.uk
www.jonesrobinson.co.uk

If there are any queries in relation to these property particulars, please contact this office to check the information. No responsibility can be accepted for any expenses incurred by intending purchasers in inspecting properties which have been sold, let or withdrawn. The Jones Robinson Group and the vendors of this property give notice that:

1) The sales particulars are intended to provide accurate and reliable information regarding the property for the guidance of intending purchasers. Whilst all descriptions, reference to condition, dimensions, areas, and measurements are believed to be accurate any intending purchasers should not rely on them as statements of fact and must satisfy themselves by inspection as to their correctness. **2)** The particulars do not constitute part of an offer or contract with prospective purchasers. **3)** All curtains, carpets, blinds equipment, light fittings and fixtures are deemed to be removable by the Vendor unless specifically negotiated with the sale of the property. **4)** No person in the employment of the Jones Robinson Group has any authority to make or give representation or warranty whatsoever in relation to this property on behalf of the Jones Robinson Group, nor enter into any contract on behalf of the vendor. **5)** We offer a wide range of services through third party providers including solicitors, mortgage providers, EPC suppliers and other contractors. You are under no obligation to use these services and it is Your discretion whether You choose to deal with these providers or use Your own preferred supplier. Our mortgage provider pays us a referral fee, the amount of which varies depending on the individual mortgage, however, the average fee received by us is £223.50 per referral (based on total referrals across all Jones Robinson offices in 2023). For referrals to our recommended conveyancing firm, the average referral fee is £407 per referral (based on total referrals across all Jones Robinson offices in 2023) and our contractors (including EPC providers) pay Us an average fee of £26.30 per referral (based on total Jones Robinson Group referrals in 2023). Full details of our referral fees are listed on our website.

