



YOULDEN DRIVE, GU15

KIER CHARLES

SURREY • BERKSHIRE • HANTS

YOULDEN DRIVE, GU15

VIEW SAFELY WITH KIER.

LAUNCH DAY APRIL 3rd 10:00 - 12:30 STRICTLY BY APPOINTMENT ONLY.

A substantial family home having undergone some refurbishment and now offering an open plan kitchen/dining room, utility, family room and living room.

To the first floor a spacious master suite with fitted wardrobes and ensuite, a further four bedrooms complimented by three bathrooms.

There is excellent potential for a loft conversion also a large garage with an internal door (currently used as a gym).

The private rear garden backs onto Camberley Heath Golf course and is predominantly laid to lawn with a patio and large shed.

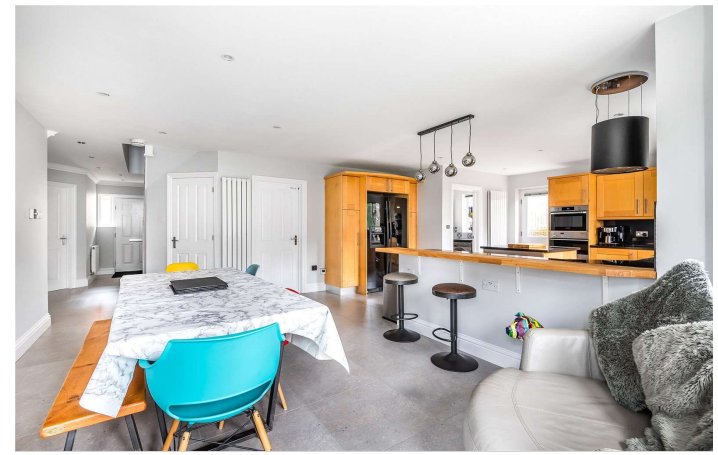
An outstanding feature to this home is the cul de sac location offering easy reach to highly sought after schools, Camberley town centre, major road and rail links.

- **FIVE BEDROOMS**
- **FOUR BATHROOMS**
- **OPEN PLAN KITCHEN/DINING ROOM**
- **TWO FURTHER RECEPTION ROOMS**
- **FURTHER POTENTIAL TO EXTEND STPP**
- **BACKING ONTO CAMBERLEY HEATH GOLF COURSE**
- **CUL DE SAC LOCATION**

PROPERTY INFORMATION

Postcode | **GU15 1AL**
Tenure | **Freehold**
Price | **£850,000**
Viewing | **By appointment with Kier Charles**

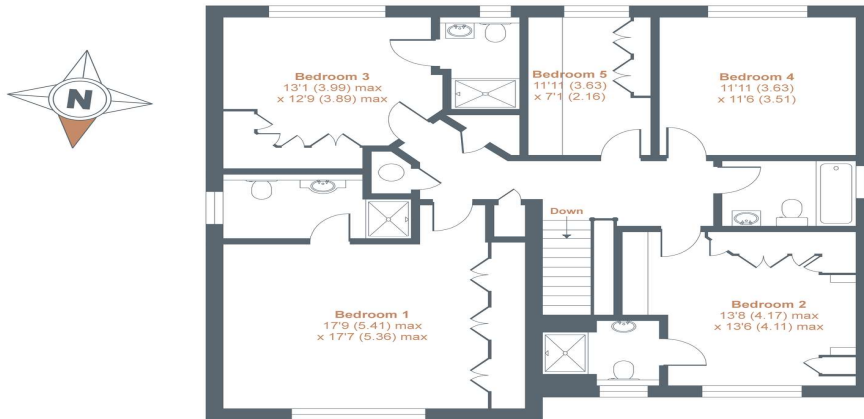




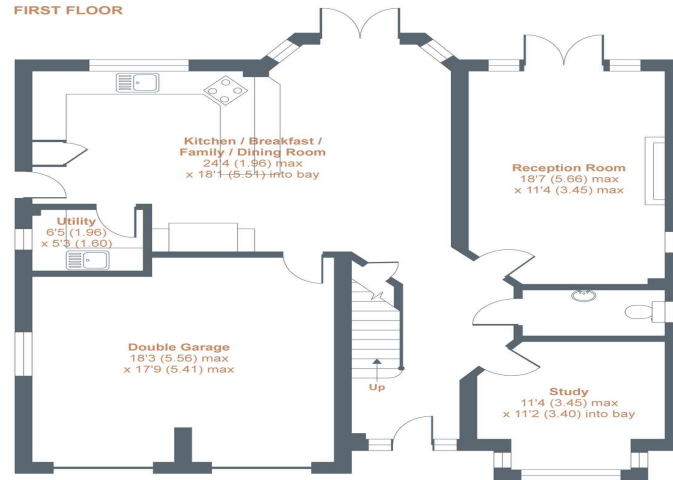
Youlden Drive, Camberley, GU15

Approximate Area = 2463 sq ft / 228.8 sq m (includes garage)

For identification only - Not to scale



FIRST FLOOR



GROUND FLOOR



Floor plan produced in accordance with RICS Property Measurement Standards incorporating International Property Measurement Standards (IPMS2 Residential). © nchecon 2021. Produced for Kier Charles Property Services Limited. REF: 705829

KIER CHARLES
PROPERTY SERVICES

CONTACT INFORMATION:

Surrey: 01276 949789

Berkshire: 01344 513789

Hampshire: 01252 213789

info@kiercharles.co.uk

KIER CHARLES

SURREY • BERKSHIRE • HANTS