



NURSERY CLOSE, GU16

**KIER CHARLES**  
SURREY • BERKSHIRE • HANTS

## NURSERY CLOSE, GU16

VIEW WITH KIER CHARLES SURREY.

A delightful four bedroom detached family home positioned in a highly sought after location in Frimley Green. Arranged over two floors offering over 1300 sqft.

To the ground floor there is a welcoming hallway with 15ft living room, kitchen, dining room and wc.

The first floor offers four large bedrooms and family bathroom.

There is ample parking to the front, front access to the garage and side access to the rear the garden which offers complete privacy and has a southerly aspect with a patio the perfect space for summer entertaining.

The property is within easy reach of shops, restaurants, pubs and railway station along with Frimley Park Hospital, Tomlinscote School/Sixth Form and the Grove school. The M3 with routes into London and the south coast and the A30 are easily accessible.

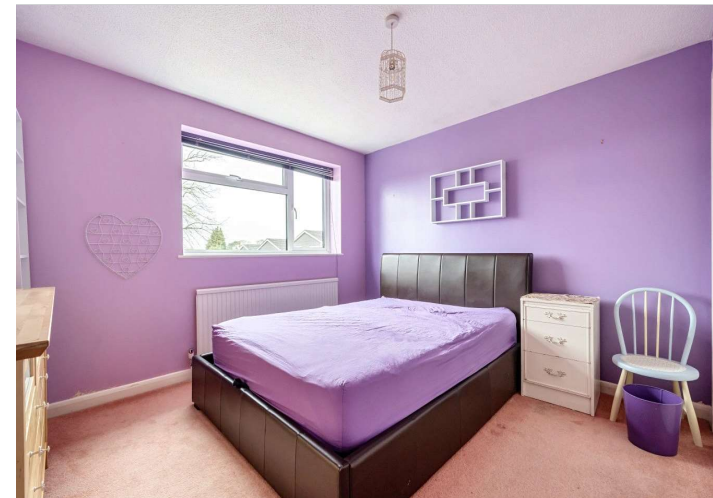
To fully appreciate the space, location and condition a personal tour with Kier Charles is highly recommended.

- **QUIET CUL-DE-SAC**
- **TWO RECEPTION ROOMS**
- **FOUR BEDROOMS**
- **CLOSE TO LOCAL AMENITIES**
- **GARAGE AND DRIVEWAY**
- **EXCELLENT SCHOOL CATCHMENTS**

### PROPERTY INFORMATION

Postcode | **GU16 6JZ**  
Tenure | **Freehold**  
Price | **O.I.E.O £500,000**  
Viewing | **By appointment with Kier Charles**

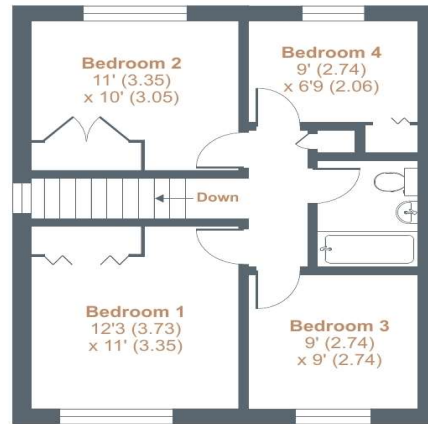




# Nursery Close, Frimley Green, Camberley, GU16

Approximate External Area = 1319 sq ft / 122.5 sq m (includes garage)

For identification only - Not to scale



FIRST FLOOR



GROUND FLOOR



Floor plan produced in accordance with RICS Property Measurement Standards incorporating International Property Measurement Standards (IPMS2 Residential). © richcom 2023. Produced for Kier Charles Property Services Limited. REF: 974560

KIER CHARLES  
PROPERTY SERVICES

## CONTACT INFORMATION:

Surrey: 01276 949789

Berkshire: 01344 513789

Hampshire: 01252 213789

[info@kiercharles.co.uk](mailto:info@kiercharles.co.uk)

# KIER CHARLES

SURREY • BERKSHIRE • HANTS