



THE SPINNEY, GU46

KIER CHARLES

SURREY • BERKSHIRE • HANTS

THE SPINNEY, GU46

VIEW SAFELY WITH KIER.

A spacious three bedroom home positioned in a quiet cul de sac within easy reach of Yateley Town centre.

Offered to the market with no onward chain and in good condition throughout.

Enjoying a living/dining room, refitted kitchen, WC and attached single garage to the ground floor.

To the first floor there are three bedrooms complimented by a family bathroom.

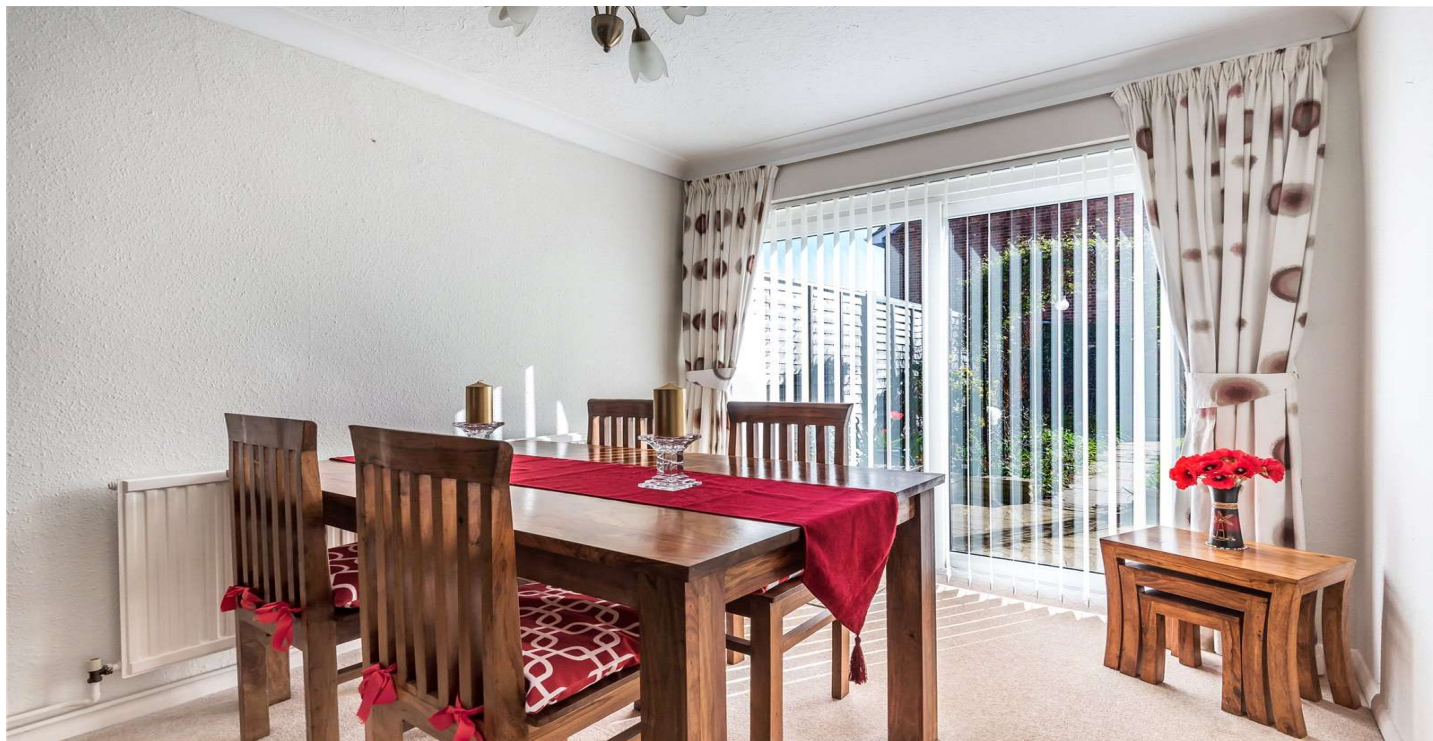
The rear garden receives good privacy and is of a sunny aspect.

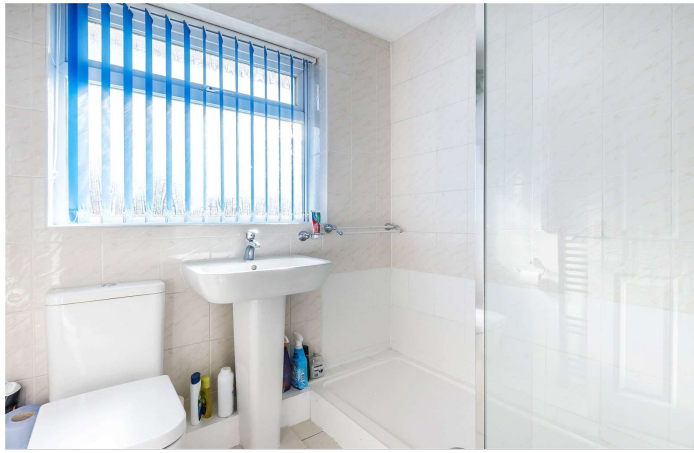
To appreciate the space, location and condition a viewing is recommended to avoid disappointment.

- **THREE BEDROOMS**
- **CUL DE SAC LOCATION**
- **CLOSE TO YATELEY CENTRE**
- **SPACIOUS LIVING/DINING ROOM**
- **KITCHEN/BREAKFAST ROOM**
- **NO CHAIN COMPLICATIONS**

PROPERTY INFORMATION

Postcode | **GU46 7SJ**
Tenure | **Freehold**
Price | **£375,000**
Viewing | **By appointment with Kier Charles**

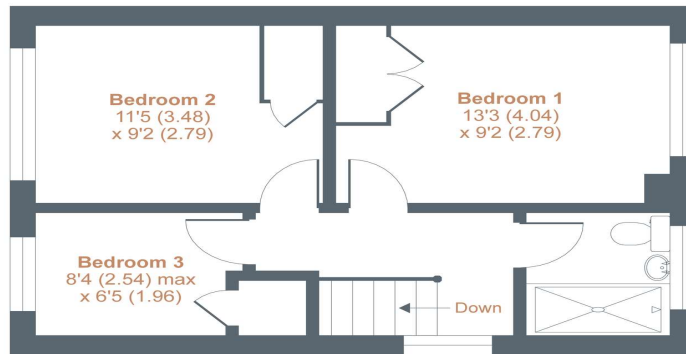




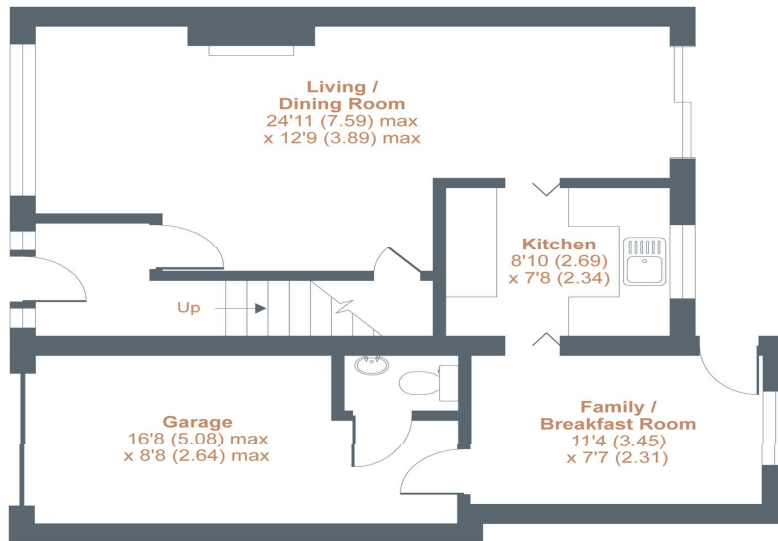
The Spinney, Yateley, GU46

Approximate Area = 1061 sq ft / 98.5 sq m (includes garage)

For identification only - Not to scale



FIRST FLOOR



GROUND FLOOR



Floor plan produced in accordance with RICS Property Measurement Standards incorporating International Property Measurement Standards (IPMS2 Residential). © nichecom 2021. Produced for Kier Charles Property Services Limited. REF: 708124

KIER CHARLES
PROPERTY SERVICES

CONTACT INFORMATION:

Surrey: 01276 949789

Berkshire: 01344 513789

Hampshire: 01252 213789

info@kiercharles.co.uk

KIER CHARLES

SURREY • BERKSHIRE • HANTS