



SUFFOLK COURT, GU16

**KIER CHARLES**

SURREY • BERKSHIRE • HANTS

## SUFFOLK COURT, GU16

VIEW SAFELY WITH DILLAN.

A SPACIOUS TOP FLOOR APARTMENT OFFERING NO ONWARD CHAIN COMPLICATIONS.

This fine property is positioned in the highly regarded Dettingen Park development.

The property offers an excellent layout benefitting from two double bedrooms. Also there is family bathroom.

A spacious living/dining room and separate kitchen also benefits this home.

There are communal gardens and allocated parking.

To avoid disappointment an early viewing with Kier is highly recommended.

- **TWO BEDROOMS**
- **TOP FLOOR**
- **ALLOCATED PARKING**
- **SOUTH FACING COMMUNAL GARDENS**
- **NO CHAIN COMPLICATIONS**

### PROPERTY INFORMATION

Postcode | **GU16 6GR**  
Tenure | **Leasehold**  
Price | **£225,000**  
Viewing | **By appointment with Kier Charles**

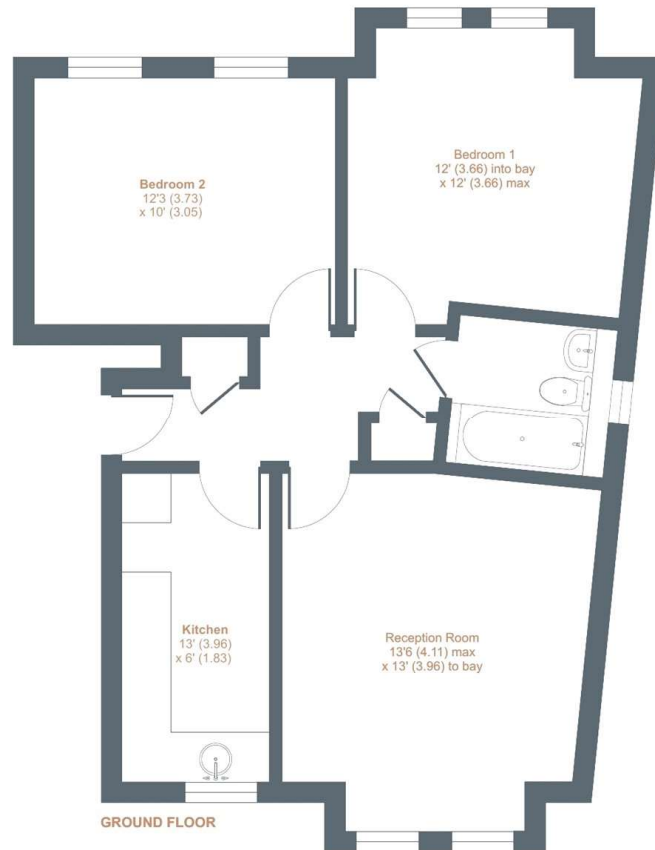




# Suffolk Court, Deepcut, Camberley, GU16

Approximate External Area = 725 sq ft / 67 sq m

For identification only - Not to scale



Floor plan produced in accordance with RICS Property Measurement Standards incorporating International Property Measurement Standards (IPMS2 Residential). © nichecom 2022. Produced for Kier Charles Property Services Limited. REF: 870800



## CONTACT INFORMATION:

Surrey: 01276 949789

Berkshire: 01344 513789

Hampshire: 01252 213789

[info@kiercharles.co.uk](mailto:info@kiercharles.co.uk)

# KIER CHARLES

SURREY • BERKSHIRE • HANTS