



HORNBEAM PLACE, RG2

KIER CHARLES

SURREY • BERKSHIRE • HANTS

HORNBEAM PLACE, RG2

VIEW SAFELY WITH KIER.

POSITIONED IN A QUIET CUL DE SAC OVERLOOKING A STUNNING LAKE ON THE HIGHLY POPULAR WATERMAN'S VIEW DEVELOPMENT BY CREST HOMES.

Tucked away with stunning views this family home is an ideal purchase. This turnkey home was purchased off plan four years ago by the current owners as a pied-de-terre, and is in wonderful condition.

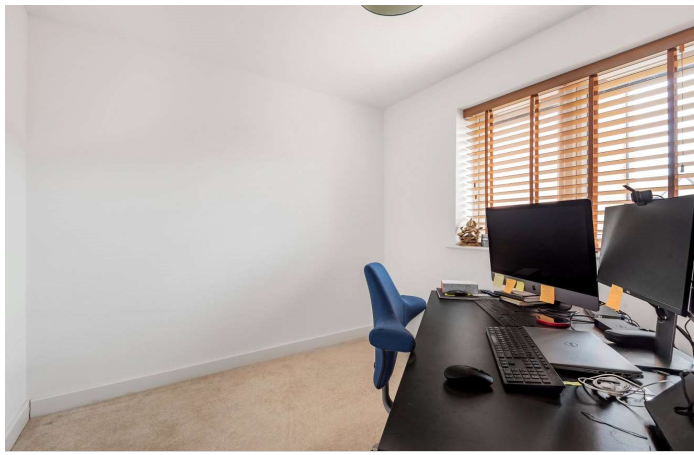
A personal tour with Kier to appreciate the space, location and condition is highly recommended to avoid disappointment.

- **THREE BEDROOMS**
- **TWO BATHROOMS**
- **KITCHEN/BREAKFAST ROOM**
- **L SHAPED PRIVATE GARDEN**
- **OVERLOOKING LAKE**
- **LOVELY QUIET WALKS AROUND**
- **CONVENIENT FOR COMMUTING**

PROPERTY INFORMATION

Postcode | **RG2 9GL**
Tenure | **Freehold**
Price | **£499,950**
Viewing | **By appointment with Kier Charles**

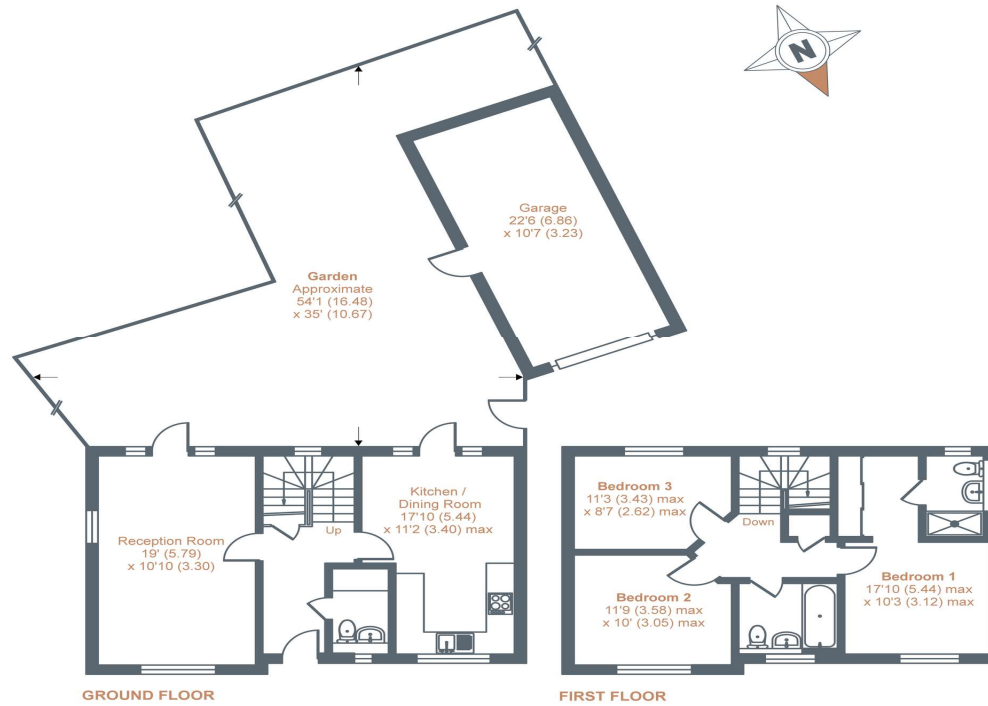




Hornbeam Place, Arborfield Green, Reading, RG2

Approximate Area = 1322 sq ft / 122.8 sq m (includes garage)

For identification only - Not to scale



Floor plan produced in accordance with RICS Property Measurement Standards incorporating International Property Measurement Standards (IPMS2 Residential). © nichecom 2021. Produced for Kier Charles Property Services Limited. REF: 754327

KIER CHARLES
PROPERTY SERVICES

CONTACT INFORMATION:

Surrey: 01276 949789

Berkshire: 01344 513789

Hampshire: 01252 213789

info@kiercharles.co.uk

KIER CHARLES

SURREY • BERKSHIRE • HANTS