




 2 Bedrooms

 1 Bathroom

 2 Reception Rooms

 Off-Street Parking

 135ft

 EPC Band E

Council Tax
Band: E £2,126.71 (2019/2020)
Local Authority
St Albans City & District Council

 **ashtons**
for life's great moves



Hazelwood Drive, St. Albans, AL4 0UW
£1,650 pcm Unfurnished

Hazelwood Drive, St. Albans

An attractive and beautifully appointed two bedroom semi-detached house with off-street parking and a good size garden. Offered unfurnished and available immediately.

🏡 Attractive Semi-Detached Home

🏡 Two Bedrooms

🏡 Open Plan Kitchen/Dining Room

🏡 Off-Street Parking

🏡 Offered Unfurnished

🏡 Available Immediately

Description

The property has just been refurbished to exacting standards providing a fresh and contemporary feel throughout which also includes LED lighting and Bosch smart control heating system. The entrance hall is bright and airy with under-stairs storage and original stained glass window. The reception room, with bay window, has been finished with wood style flooring and neutral decor. The open-plan kitchen/dining room has been fitted with contemporary warm grey wall and base units and good quality integrated appliances. The first floor comprises two double bedrooms with built-in wardrobes in the master and a brand new four piece bathroom suite.

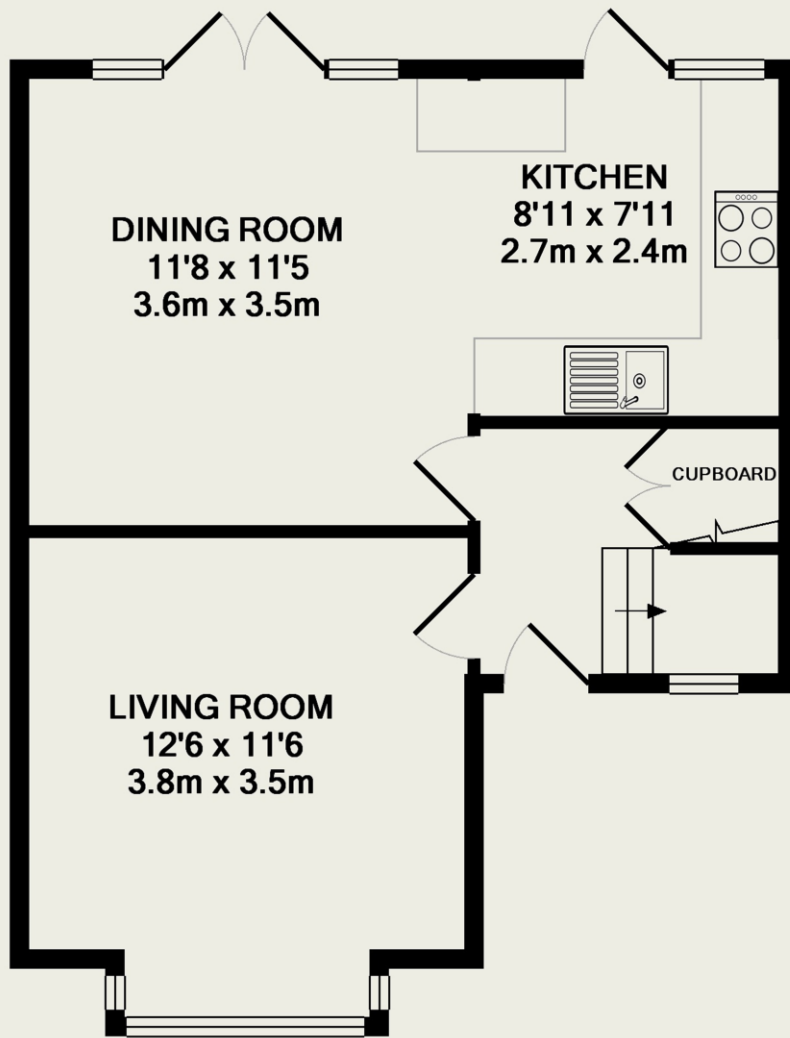
The extensive garden is accessed either directly from the dining area via French doors or the kitchen. There is also side access via the private driveway and two useful storage sheds. Occupiers would further benefit from off-street parking, gas central heating and double glazing.

Location

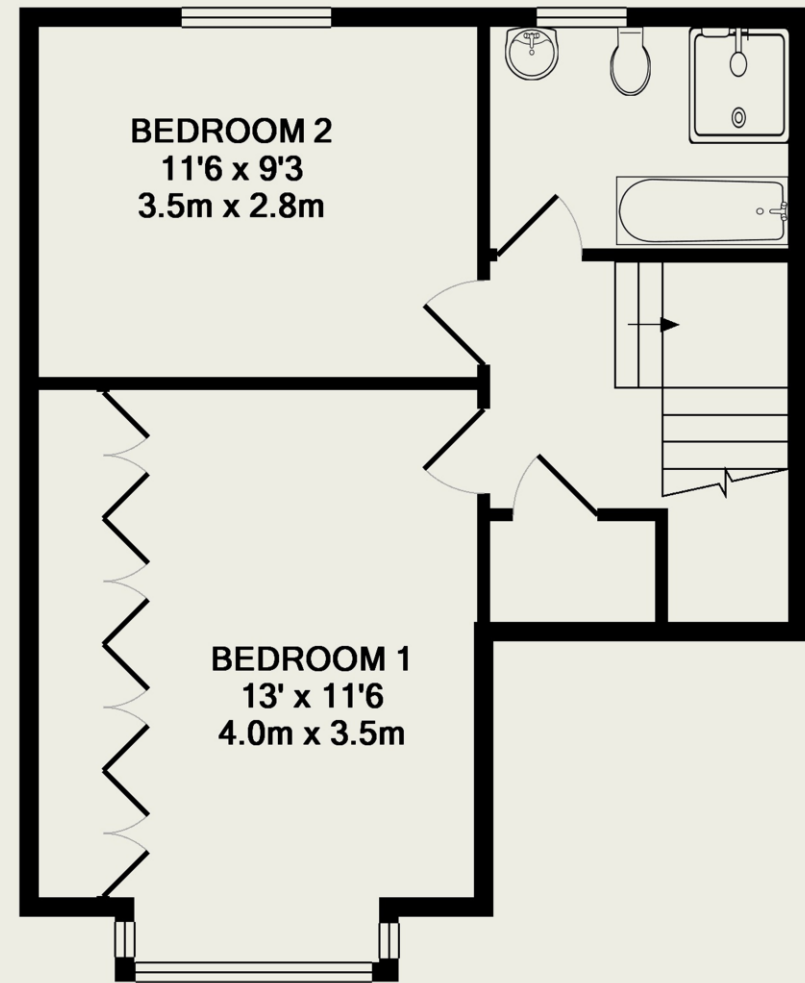
Situated on Hazelwood Drive on the Eastern side of the City, the property is located under a mile from local shopping facilities at Marshalswick Quadrant and a short drive from the greater facilities at St Albans City centre. The property is also within easy walking distance of the popular schools, Oakwood and Beaumont.







GROUND FLOOR



1ST FLOOR

TOTAL APPROX. FLOOR AREA 807 SQ.FT. (75.0 SQ.M.)
Made with Metropix ©2019