



THE OLD SCHOOL HOUSE
Ashe, Basingstoke

THE OLD SCHOOL HOUSE, ASHE, BASINGSTOKE RG25 3AQ

- Overton Station 2 miles
- Basingstoke 7 miles
- M3 (J7) 7 miles

Kitchen/dining room • Sitting room • Snug
3 Bedrooms Family bathroom • En-suite shower
room • Garden • EPC Rating D

DESCRIPTION

The Old School House is a charming brick under tile semi-detached cottage superbly located in the hamlet of Ashe. The Old School House was built as a school in 1873, and attached to the former school master's house. The property has been thoughtfully improved and extended and now offers comfortable and well presented three bedroom accommodation of considerable charm.

On the ground floor the front door opens to the reception hall off which is the sitting room with exposed floorboards and open fire. A real attraction of the house is the impressive open plan dining/kitchen area which is flooded with light from roof lights above the kitchen. Beyond is a bathroom and door to the garden. On the other side of the entrance hallway is a snug/tv room/study with built in storage.

On the first floor there is a master bedroom with built in storage and en suite shower room, a large, extended second bedroom and a third bedroom with views of the Test Valley.

OUTSIDE

The Old School House is situated on a quiet country lane, and is approached through a wrought iron gate onto a pathway leading to the front door. The enclosed private garden lies to the side of the house and includes an area of lawn, various shrubs and plants including specimen roses and a garden store.

**A REFURBISHED PERIOD SEMI-DETACHED COTTAGE IN A QUIET HAMLET,
WITHIN EASY REACH OF THE MAINLINE STATION AT OVERTON.**



LOCATION

Ashe is a small hamlet located in an enviable position to the west of Basingstoke, close to the villages of North Waltham and Overton. The property is part of a small cluster of houses around the church in a lovely rural setting with good local footpaths. Ashe has easy access to Overton and Basingstoke stations which have a regular mainline service to Waterloo taking between 55-60 minutes. The A303, A34, M3 and M4 are all within easy reach as well as Heathrow and Southampton airports. Overton (approx 1 mile) has an excellent primary school and extensive facilities for most daily requirements. It has a good range of shops (butcher, greengrocer, bakery, wine merchant) several pubs, restaurants and coffee shops as well as a doctors' surgery and veterinary surgery. Basingstoke offers a more extensive range of leisure, recreational and shopping facilities.

ADDITIONAL INFORMATION

Tenure: Freehold

Local Authority: Basingstoke and Deane Borough Council.
01256 844844.

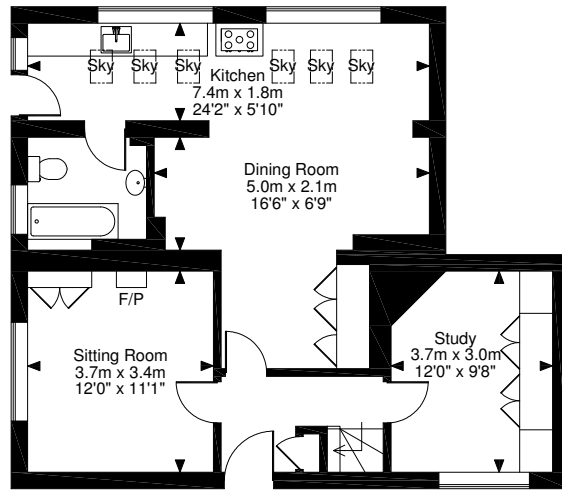
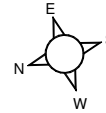
Services: Mains electricity and water. Oil central heating. Private drainage.

Viewings: Viewing by appointment through Randalls Residential on 01256 345635

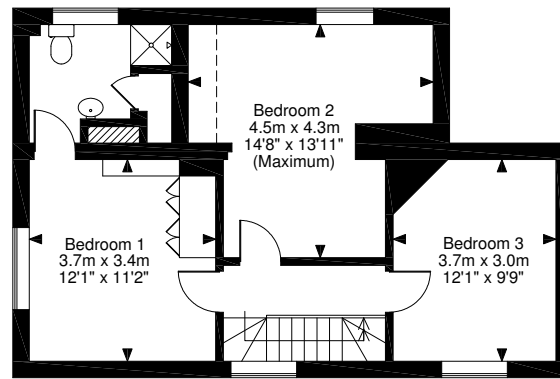
Directions: RG25 3AQ: From Overton take the B3400 towards Oakley and Basingstoke. After approximately 1.4 miles take the left hand turn signed Ashe and North Oakley. The Old School House will be found on the right hand side after approximately 200 yards.



The Old School House, Ashe, Basingstoke
Approximate Gross Internal Area
1,292 sq ft / 120 sq m



Ground Floor



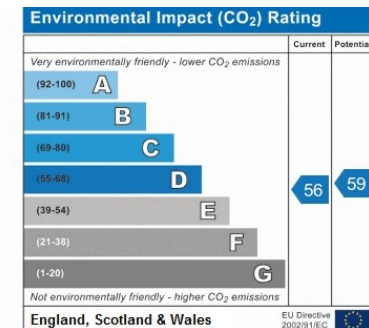
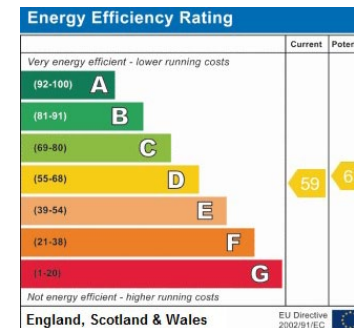
First Floor

FOR ILLUSTRATIVE PURPOSES ONLY - NOT TO SCALE

The position & size of doors, windows, appliances and other features are approximate only.

--- Denotes restricted head height

© ehouse. Unauthorised reproduction prohibited. Drawing ref. dig/8206492/WFF



Randalls 01256 345635

simon@randallsresidential.co.uk

Worting House, Church Lane, Basingstoke, RG23 8PX



Carter Jonas Winchester 01962 842742

winchester@carterjonas.co.uk

9-10 Jewry Street, Winchester, Hampshire SO23 8RZ

Carter Jonas

IMPORTANT INFORMATION

Our property particulars do not represent an offer or contract, or part of one. The information given is without responsibility on the part of the agents, seller(s) or lessor(s) and you should not rely on the information as being factually accurate about the property, its condition or its value. Neither Carter Jonas LLP nor anyone in its employment or acting on its behalf has authority to make any representation or warranty in relation to this property. We have not carried out a detailed survey, nor tested the services, appliances or fittings at the property. The images shown may only represent part of the property and are as they appeared at the time of being photographed. The areas, measurements and distances are approximate only. Any reference to alterations or use does not mean that any necessary planning permission, building regulation or other consent has been obtained. The VAT position relating to the property may change without notice.