



CHURCH HILL, GU15

KIER CHARLES

SURREY • BERKSHIRE • HANTS

CHURCH HILL, GU15

VIEW WITH KIER CHARLES SURREY.

An opulent late Victorian family home having been upgraded to a high specification throughout.

This stunning home is approached via electric gates enjoying ample parking and access to a double detached garage and office space above.

Arranged over three floors offering in excess of 3,800 sqft.

As you enter there is grand entrance hall with a stunning original winding staircase, the living room measures 25ft and further 10ft office to the rear, family room, study and stunning 22ft kitchen/breakfast room and WC to the ground floor. The first floor offers a master suite with dressing room and luxury ensuite, three further bedrooms and family bathroom.

The second floor enjoys two double bedrooms and beautiful bathroom with roll top bath.

The rear garden has been fully landscaped with a range of low maintenance artificial grass on tiered levels leading up to a wooded copse area. Also benefitting from an outbuilding currently used as a gym and separate bar area.

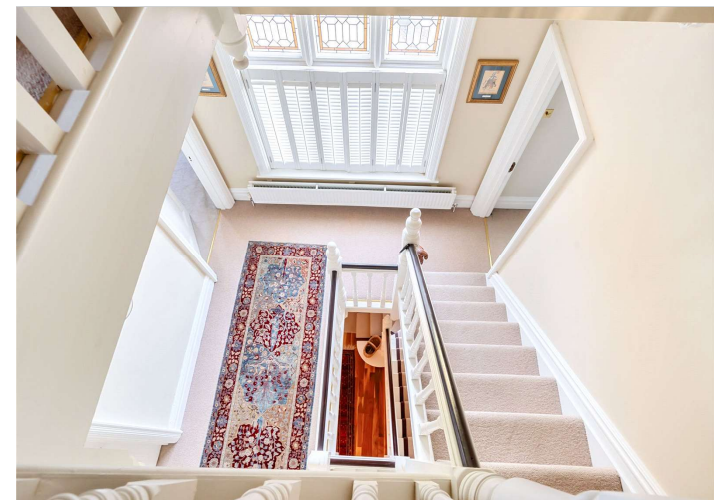
A large patio and decking area, ideal for alfresco dining completes this magnificent family home.

To fully appreciate the character, charm and condition of this home a personal tour with Kier Charles is highly recommended.

PROPERTY INFORMATION

Postcode		GU15 2HH
Tenure		Freehold
Price		£1,450,000
Viewing		By appointment with Kier Charles





Church Hill, Camberley, GU15

Approximate Internal Area = 2896 sq ft / 269 sq m

Garage = 531 sq ft / 49.3 sq m

Limited Use Area = 145 sq ft / 13.4 sq m

Outbuilding = 247 sq ft / 22.9 sq m

Total = 3819 sq ft / 354.6 sq m

For identification only - Not to scale



Denotes restricted head height



Floor plan produced in accordance with RICS Property Measurement Standards incorporating International Property Measurement Standards (IPMS2 Residential). © nichecom 2024. Produced for Kier Charles Property Services Limited. REF: 1080232

KIER CHARLES

PROPERTY SERVICES

CONTACT INFORMATION:

Surrey: 01276 949789

Berkshire: 01344 513789

Hampshire: 01252 213789

info@kiercharles.co.uk

KIER CHARLES

SURREY • BERKSHIRE • HANTS