



GREENMANTLE, HEATHWAY, GU15

KIER CHARLES

SURREY • BERKSHIRE • HANTS

GREENMANTLE, HEATHWAY, GU15

SOLD stc WITH KIER.

A PROPERTY OFFERING FABULOUS POTENTIAL STPP.

A rare opportunity to acquire an unmodernised family home positioned in arguably one of the most sought after locations in Camberley Town Centre. Enjoying a plot circa 1/3 acre with space around the house for further development subject to planning and consent.

The property offers five bedrooms, master with dressing area and ensuite, accompanied by a further four good size bedrooms and family bathroom.

The ground floor offers three reception rooms, conservatory, kitchen breakfast room, utility and WC.

A detached double garage, large driveway and flat plot also benefit this property.

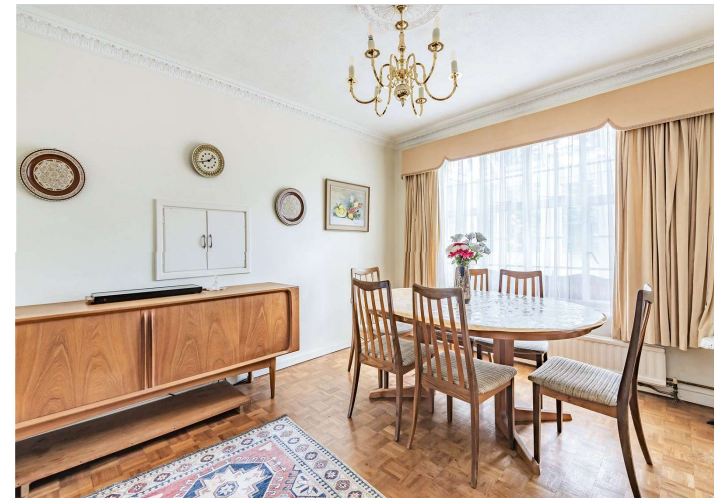
Situated in the heart of Camberley town centre, just a short walk from a wealth of shops and restaurants. The train station, A30 and M3 are within close proximity making it an ideal location for commuters. Highly sought after Schools surround the area offering an ideal opportunities for family living.

- **GREAT POTENTIAL STPP**
- **HIGHLY SOUGHT AFTER LOCATION**
- **GENEROUS FLAT PLOT**
- **WALKING DISTANCE TO THE TOWN CENTRE**
- **EXCELLENT SCHOOL CATCHMENT**
- **NO CHAIN COMPLICATIONS**

PROPERTY INFORMATION

Postcode | **GU15 2EL**
Tenure | **Freehold**
Price | **£1,100,000**
Viewing | **By appointment with Kier Charles**

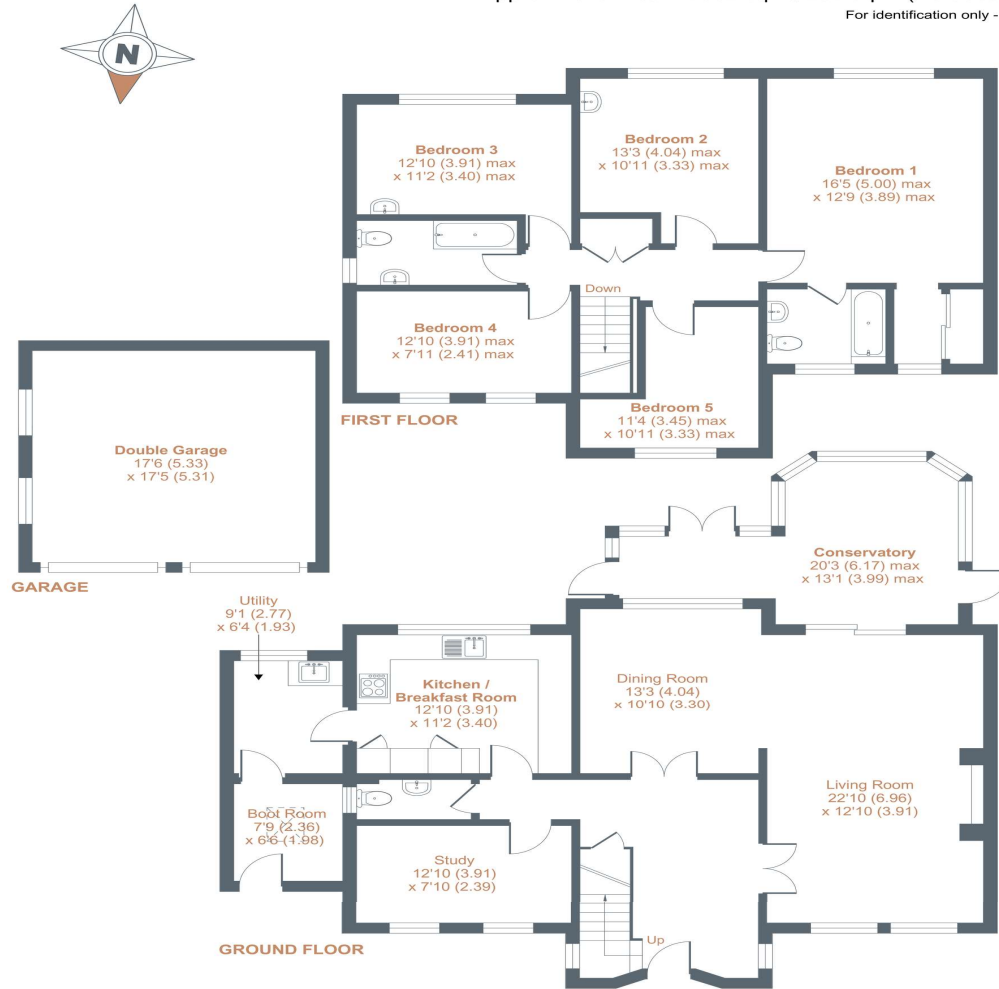




Green Mantle, Heathway, Camberley, GU15

Approximate Area = 2502 sq ft / 232 sq m (includes garage)

For identification only - Not to scale



Floor plan produced in accordance with RICS Property Measurement Standards incorporating International Property Measurement Standards (IPMS2 Residential). © nichecom 2020. Produced for Kier Charles Property Services Limited. REF: 646594

KIER CHARLES
PROPERTY SERVICES

CONTACT INFORMATION:

Surrey: 01276 949789

Berkshire: 01344 513789

Hampshire: 01252 213789

info@kiercharles.co.uk

KIER CHARLES

SURREY • BERKSHIRE • HANTS