



THE SPINNEY, GU15

KIER CHARLES

SURREY • BERKSHIRE • HANTS

THE SPINNEY, GU15

VIEW SAFELY WITH KIER.

WONDERFUL POTENTIAL IN A SOUGHT AFTER LOCATION!

A spacious four bedroom detached family home requiring updating and offering a wealth of space over two floors.

Positioned on an enviable plot approaching 0.2 acres front to back and receiving excellent privacy.

The spinney is a quiet cul de sac offering easy reach to Camberley town centre, excellent schools and Heatherside shops nearby.

The main feature to this wonderful property is the south east facing rear garden, mainly laid to lawn offering great privacy. There is wonderful potential to extend to the rear STPP and consent.

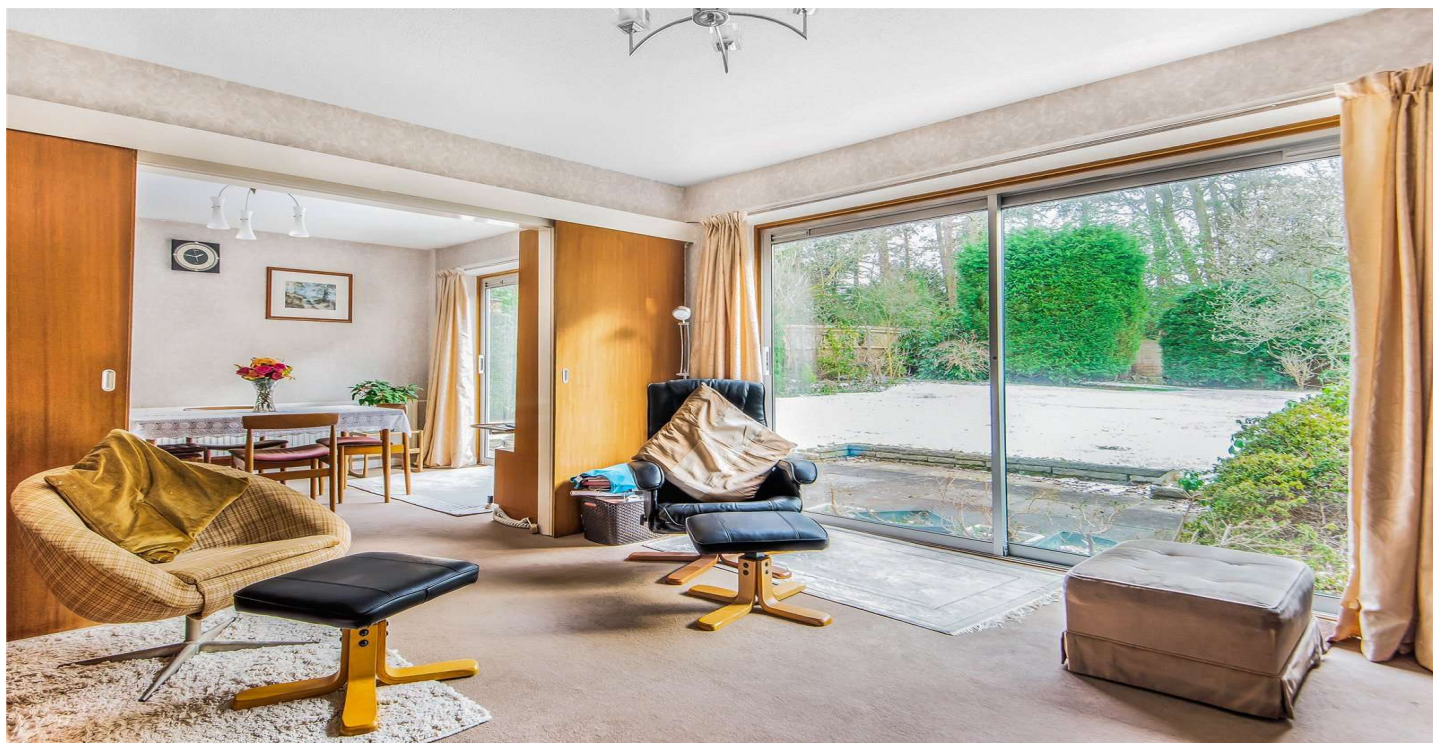
A worthy note, the main receptions all face the rear garden receiving wonderful light through the home.

To fully appreciate the potential and space a viewing is highly recommended.

- **FOUR BEDROOMS**
- **THREE RECEPTION ROOMS**
- **STUNNING SOUTH EAST FACING GARDEN**
- **0.2 ACRE PLOT**
- **REQUIRING UPDATING**
- **SOUGHT AFTER CUL DE SAC LOCATION**
- **CLOSE TO AMENITIES**

PROPERTY INFORMATION

Postcode | **GU15 1HH**
Tenure | **Freehold approximately 0years**
Price | **£635,000**
Viewing | **By appointment with Kier Charles**





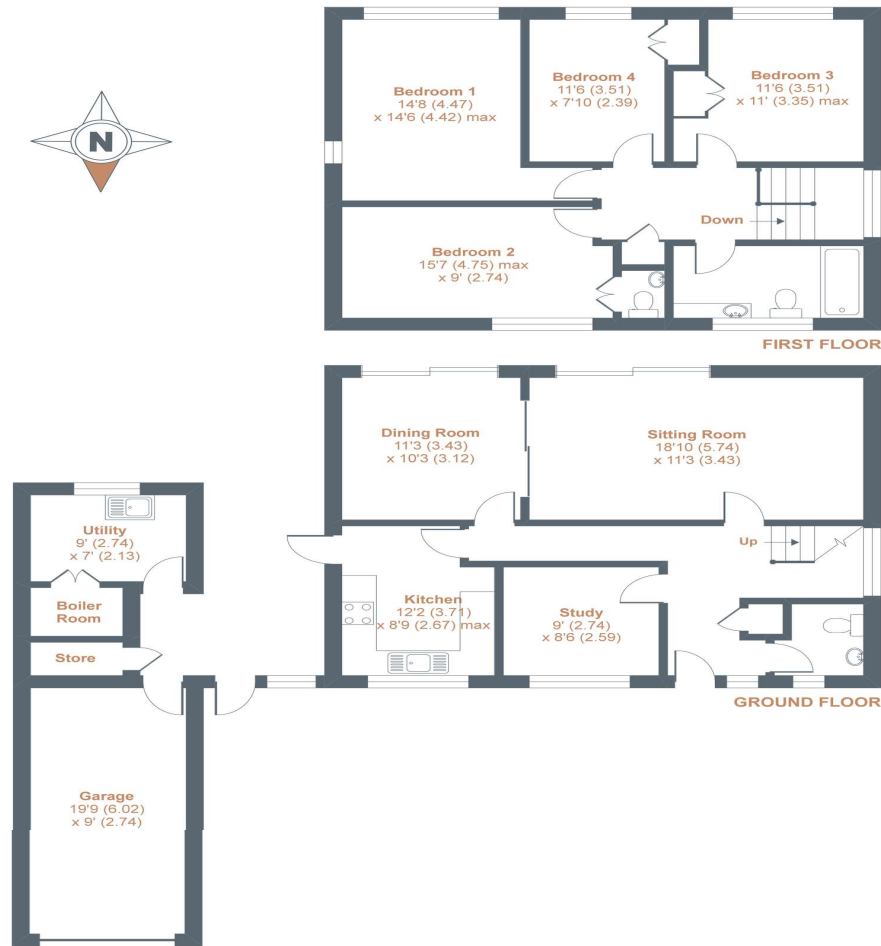
The Spinney, Camberley, GU15

Approximate Area = 1637 sq ft / 152.1 sq m (includes garage)

Outbuildings = 104 sq ft / 9.6 sq m

Total = 1741 sq ft / 161.7 sq m

For identification only - Not to scale



Floor plan produced in accordance with RICS Property Measurement Standards incorporating International Property Measurement Standards (IPMS2 Residential). © nlcocom 2021. Produced for Kier Charles Property Services Limited. REF: 692614

KIER CHARLES
PROPERTY SERVICES

CONTACT INFORMATION:

Surrey: 01276 949789

Berkshire: 01344 513789

Hampshire: 01252 213789

info@kiercharles.co.uk

KIER CHARLES

SURREY • BERKSHIRE • HANTS