



STRAWBERRY COURT, GU16

KIER CHARLES

SURREY • BERKSHIRE • HANTS

STRAWBERRY COURT, GU16

VIEW SAFELY WITH KIER.

A WONDERFUL FAMILY HOME HAVING UNDERGONE COMPLETE REFURBISHMENT AND EXTENSIONS TO A HIGH SPECIFICATION.

This stunning home is positioned on the ever popular Dettingen Park development renowned an excellent community and offering close proximity to highly sought after Schools, playing fields and local shops.

Arranged over three floors, boasting 2,480 sq ft. The specification including high quality furnishings in the bathrooms including being fully tiled, AEG & Samsung appliances in the kitchen with high end cabinetry, granite work tops, quooker taps, wine cooler and fitted fridge freezer.

Other worthy features to this home include high ceilings, low maintenance rear garden, large entrance hall, landing and balcony.

To fully appreciate the space, location and excellent condition a personal viewing via Kier is advised.

- **FIVE BEDROOMS**
- **THREE LUXURY FITTED BATHROOMS**
- **STUNNING KITCHEN**
- **LOW MAINTENANCE REAR GARDEN**
- **DETACHED DOUBLE GARAGE**
- **2,480 SQ FT ARRANGED OVER THREE FLOORS**
- **SYMPATHETICALLY EXTENDED**

PROPERTY INFORMATION

Postcode | **GU16 6GQ**
Tenure | **Freehold**
Price | **£750,000**
Viewing | **By appointment with Kier Charles**





Deepcut, Camberley, GU16

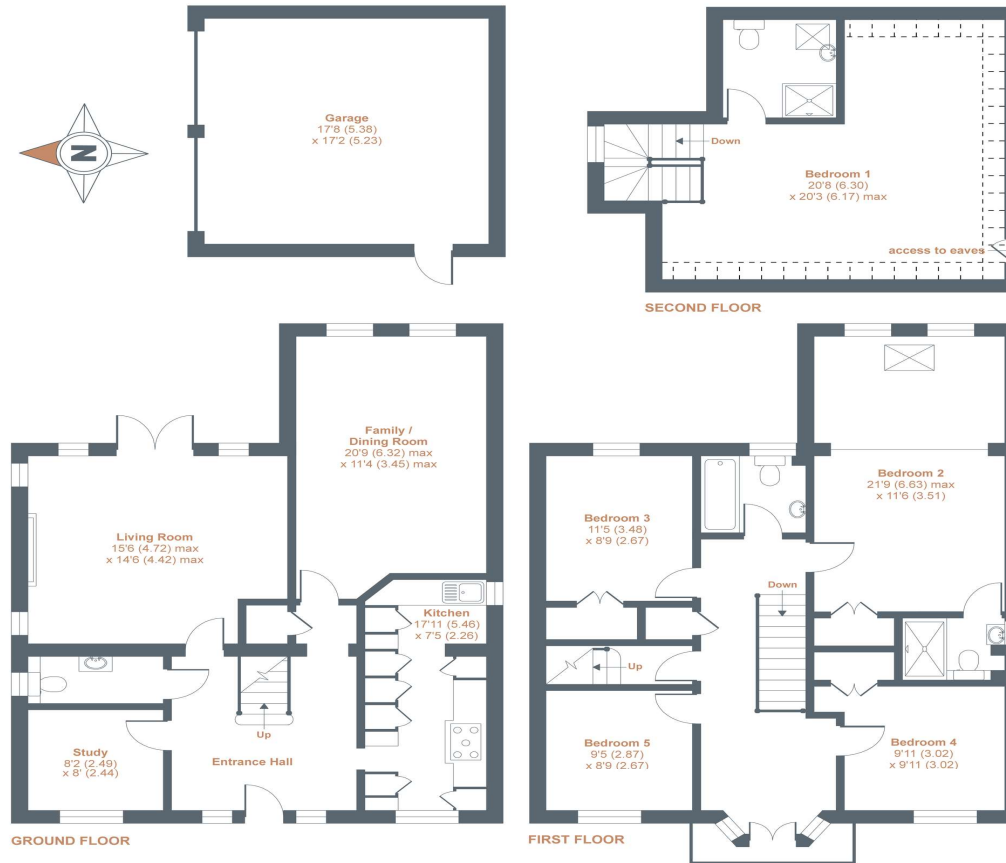
Approximate Area = 2415 sq ft / 224.4 sq m (includes garage)

Limited Use Area(s) = 65 sq ft / 6 sq m

Total = 2480 sq ft / 230.4 sq m

For identification only - Not to scale

Denotes restricted head height



Floor plan produced in accordance with RICS Property Measurement Standards incorporating International Property Measurement Standards (IPMS2 Residential). © n1cheom 2021. Produced for Kier Charles Property Services Limited. REF: 739145

KIER CHARLES
PROPERTY SERVICES

CONTACT INFORMATION:

Surrey: 01276 949789

Berkshire: 01344 513789

Hampshire: 01252 213789

info@kiercharles.co.uk

KIER CHARLES

SURREY • BERKSHIRE • HANTS