



SHAFTESBURY MOUNT, GU17

KIER CHARLES

SURREY • BERKSHIRE • HANTS

SHAFTESBURY MOUNT, GU17

VIEW SAFELY WITH KIER.

A FINE HOME ON THE EVER POPULAR HAWLEY HILL DEVELOPMENT BUILT BY THE WE RENOWED CHARLES CHURCH.

This stunning detached property having undergone refurbishment by the current owners offering 1,172 sqft over two floors.

There is engineered flooring flowing from the entrance hall through to the spacious living/dining room. A WC and stairs to the first floor are based in the entrance hall.

The property benefits from a beautiful newly fitted kitchen offering a high specification whilst retaining a classy finish.

The first floor a master bedroom, ensuite and fitted wardrobes. Complimented to a further two bedrooms and family bathroom.

The rear garden is mainly laid to lawn with a patio area, side access and access to the garage.

There is a driveway and further potential to extend the driveway as there is a good size front lawn.

To fully appreciate the space, location and condition of this lovely home a personal tour with Kier is highly recommended.

- **THREE BEDROOMS**
- **TWO BATHROOMS**
- **LUXURY FITTED KITCHEN**
- **SPACIOUS LIVING/DINING ROOM**
- **GARAGE & DRIVEWAY**
- **CORNER PLOT**
- **HIGHLY SOUGHT AFTER HAWLEY HILL DEVELOPMENT**

PROPERTY INFORMATION

Postcode | **GU17 9JR**
Tenure | **Freehold approximately 0years**
Price | **£465,000**
Viewing | **By appointment with Kier Charles**

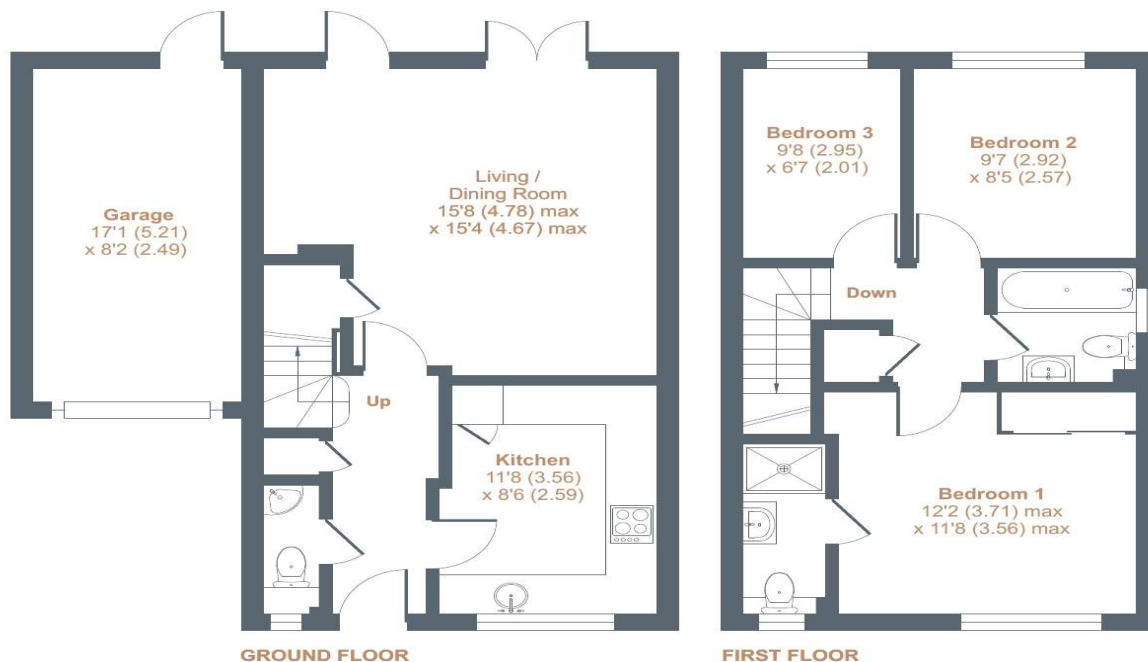




Shaftesbury Mount, Blackwater, Camberley, GU17

Approximate External Area = 1172 sq ft / 109 sq m (includes garage)

For identification only - Not to scale



CONTACT INFORMATION:

Surrey: 01276 949789

Berkshire: 01344 513789

Hampshire: 01252 213789

info@kiercharles.co.uk



Floor plan produced in accordance with RICS Property Measurement Standards incorporating International Property Measurement Standards (IPMS2 Residential). © ncthecom 2022. Produced for Kier Charles Property Services Limited. REF: 803578

KIER CHARLES
PROPERTY SERVICES

Kier Charles Limited give notice to anyone reading these particulars that: i) the particulars do not constitute part of an offer or contract; ii) this is protected by the laws of copyright. The owner of the copyright is Kier Charles Limited; This property sheet forms part of our database, and is protected by the database rights and copyrights laws. No unauthorised copying or distribution without permission; iii) the particulars including text, photographs and plans are for the guidance only of prospective purchasers and must not be relied upon as statements of fact; v) nothing in these particulars shall be deemed a statement that the property is in good condition or otherwise nor that any services or facilities are in good working order; vi) all measurements are approximate. Registered office Stanhope Gate, Surrey GU15 3DW Reg number 12626727

KIER CHARLES

SURREY • BERKSHIRE • HANTS