



BEAUFONT CLOSE, GU15

**KIER CHARLES**

SURREY • BERKSHIRE • HANTS

## BEAUFRONT CLOSE, GU15

A WONDERFUL FAMILY HOME POSITIONED AT THE END OF A CUL DE SAC AND HAVING UNDERGONE COMPLETE REFURBISHMENT.

Approaching 2,400 sq ft over two floors and enjoying secluded and contained front and back gardens ideal for any family to benefit from.

There are three spacious reception rooms to the ground floor with a stunning kitchen/breakfast room and even a spacious entrance hall & WC.

To the first floor there are four bedrooms, master with ensuite and fitted wardrobes and a further bathroom complimenting the other three bedrooms.

The large garage has been converted into an office/gym currently however could easily be converted back if required.

There is a driveway for 2-3 vehicles with gated access to the first of two landscaped gardens with decking area and artificial grass at the rear.

There is excellent School catchment also offering easy reach to Camberley and Bagshot centres. The M3 and M4 are a short drive away making commuting easy when required.

To fully appreciate the condition, location and space on offer a personal tour with Kier is advised.

- **FOUR BEDROOMS**
- **TWO BATHROOMS**
- **REFITTED KITCHEN/BREAKFAST ROOM**
- **THREE RECEPTION ROOMS**
- **DETACHED CONVERTED GARAGE TO OFFICE SPACE & GYM**
- **TUCKED AWAY CUL DE SAC LOCATION**

### PROPERTY INFORMATION

Postcode | **GU15 1NQ**  
Tenure | **Freehold**  
Price | **£795,000**  
Viewing | **By appointment with Kier Charles**





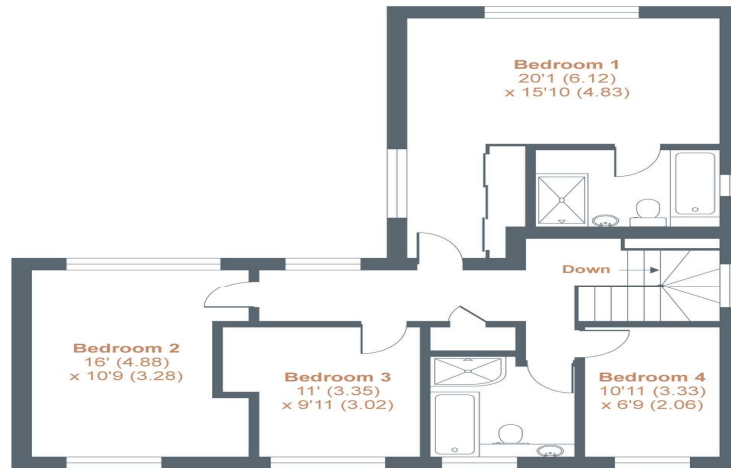
# Beaufront Close, Camberley, GU15

Approximate Area = 2071 sq ft / 192.3 sq m

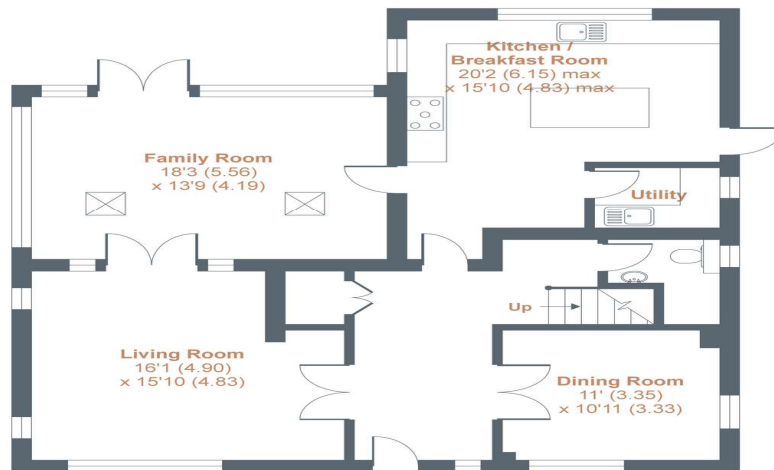
Outbuilding = 286 sq ft / 26.5 sq m

Total = 2357 sq ft / 218.9 sq m

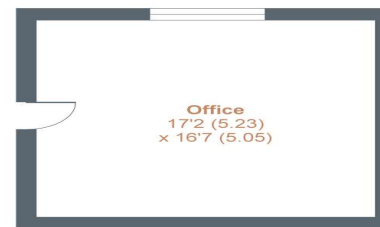
For identification only - Not to scale



FIRST FLOOR



GROUND FLOOR



Floor plan produced in accordance with RICS Property Measurement Standards incorporating International Property Measurement Standards (IPMS2 Residential). © nichecom 2021. Produced for Kier Charles Property Services Limited. REF: 769403



## CONTACT INFORMATION:

Surrey: 01276 949789

Berkshire: 01344 513789

Hampshire: 01252 213789

[info@kiercharles.co.uk](mailto:info@kiercharles.co.uk)

# KIER CHARLES

SURREY • BERKSHIRE • HANTS