

# 9 Somerset Square, London W14



FARLEYS



### Description

A superb four bedroom family house located in this sought after area of Kensington. This prestigious development built in the early 1970s by Trafalgar House and comprises three terraces in the classical Georgian style. The property was refurbished to a high standard, and benefits from a large bedroom suite with terrace, a first floor drawing room, a conservatory, a garden, a garage and off street parking.

### Location

Somerset Square is situated off Addison Road, close to the many shops, restaurants and transport facilities of both Holland Park and Kensington High Street.

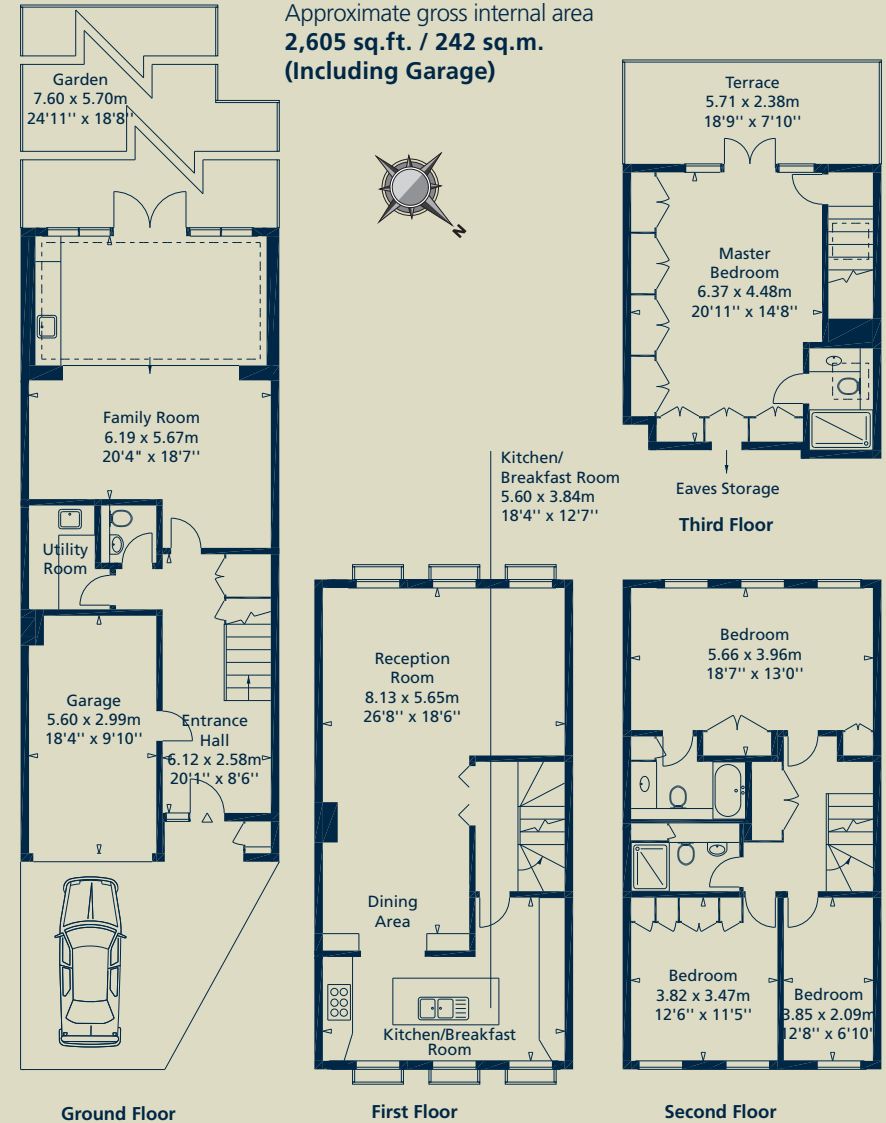
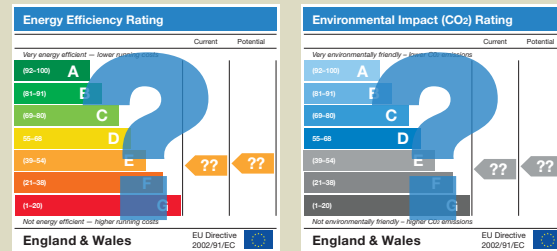
### Accommodation

- Entrance Hall • Family Room and Conservatory leading to Garden • Utility Room • First Floor Reception Room
- Dining Area • Kitchen/Breakfast Room
- Master Bedroom (leading to Terrace) with En Suite Shower Room • Bedroom 2 with En Suite Bathroom • 2 Further Bedrooms • Shower Room • Garage

### Local Authority

Royal Borough of Kensington and Chelsea

**Freehold, £3,500,000**



Sole Agent

**FARLEYS**

ARLA  
Association of Residential Letting Agents

NATA  
National Association of Estate Agents

**T 020 7589 1234**   **A 44-48 Old Brompton Road, London SW7 3DY**   **E info@farleysres.com**   **W farleysres.com**

These particulars are for general information only and do not constitute any part of an offer or a contract. All statements contained herein are made without responsibility on the part of Farleys or the Vendors or Lessors, and are not to be relied on as statement or representation of fact. Intending purchasers or Lessees must satisfy themselves or otherwise as the correctness of each of the statements contained in these particulars. Farleys has not tested any of the appliances in this property. March 2008. JW/6564 Brochure by cgpdesign.com 020 7222 7222