



SOPWITH WAY, KT15

KIER CHARLES

SURREY • BERKSHIRE • HANTS

SOPWITH WAY, KT15

VIEW WITH KIER.
NO CHAIN COMPLICATIONS.
AN ELEGANT FAMILY HOME ENJOYING A HIGH SPECIFICATION.

Positioned in a quiet location offering easy reach to Weybridge and Addlestone centres and close proximity to motorway links to London.

This property is being offered to the market for the first time since built and has been lovingly updated by the current owners and offers a flexible layout for the next discerning buying to enjoy.

On the ground floor a WC, 20 ft Garage, (currently a gym) beautiful Kitchen/Dining room overlooking the 35ft landscaped rear garden with artificial grass and patio.

The first floor enjoys a living room with balcony overlooking the quiet estate and master bedroom with Juliet balcony and ensuite.

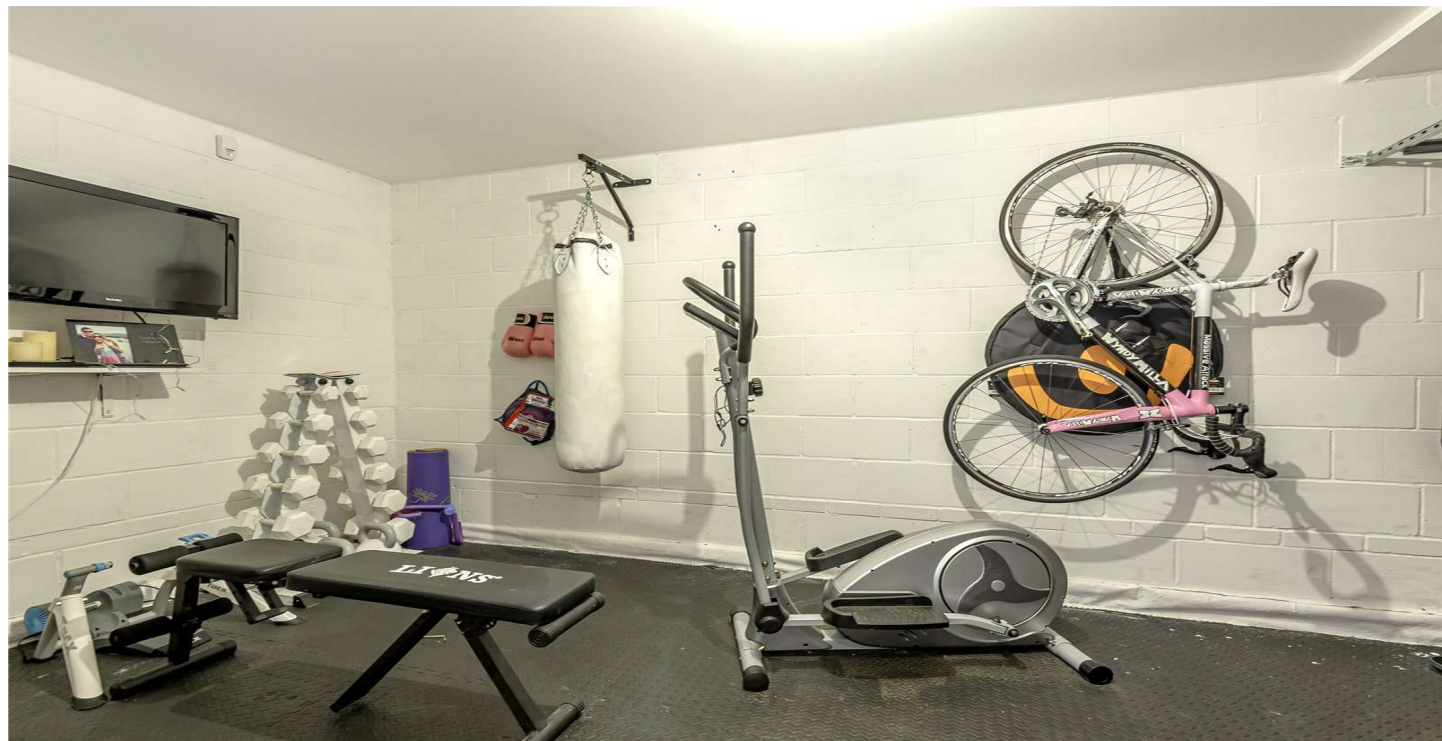
Complimented by a second floor with a guest bedroom with ensuite and a further two bedrooms and family bathroom.

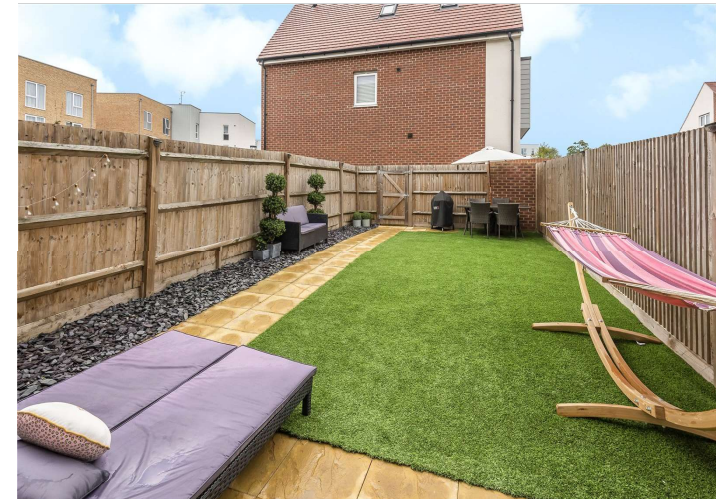
To fully appreciate the convenient location and condition a viewing is recommended to avoid disappointment.

- **NO CHAIN COMPLICATIONS**
- **FOUR BEDROOM**
- **LARGE RECEPTION ROOM**
- **THREE BATHROOMS**
- **35ft LANDSCAPED REAR GARDEN**
- **STUNNING FAMILY HOME**
- **CONVENIENT FOR COMMUTERS**

PROPERTY INFORMATION

Postcode | **KT15 2FT**
Tenure | **Freehold approximately 0years**
Price | **£575,000**
Viewing | **By appointment with Kier Charles**





Sopwith Way, Addlestone, KT15

Approximate Area = 1542 sq ft / 143.2 sq m (includes garage)

For identification only - Not to scale



Floor plan produced in accordance with RICS Property Measurement Standards incorporating International Property Measurement Standards (IPMS2 Residential). © nichecom 2020. Produced for Kier Charles Property Services Limited. REF: 651353



CONTACT INFORMATION:

Surrey: 01276 949789

Berkshire: 01344 513789

Hampshire: 01252 213789

info@kiercharles.co.uk

KIER CHARLES

SURREY • BERKSHIRE • HANTS