



Plender Street

London, NW1

Asking Price £475,000

A bright and spacious one-bedroom apartment conveniently located within close proximity to Camden High Street. The apartment boasts modern living with an open-plan kitchen, dining and reception area, a spacious double bedroom and a bathroom. Additional features include ample storage, utility room, integrated kitchen appliances, secure bike storage and a lift.



Plender Street

London, NW1

- Top Floor
- Lift
- Open Plan Living
- Excellent Location
- Long Lease
- Secure Bike Storage



Plender Street is an excellent location. It benefits from the surrounding neighbourhoods of Camden and Kings Cross. Both areas offer a fantastic array of shops, cafes and restaurants, with exceptional transport links.

Tenure: Leasehold with 116 years remaining.

Service Charge: £1865 per annum.

Ground Rent: £300 per annum.

Local Authority: London Borough Of Camden

Council Tax Band: D

Energy Efficiency Rating		
	Current	Potential
Very energy efficient - lower running costs		
A (92-100)		
B (81-91)	87	87
C (69-80)		
D (55-68)		
E (39-54)		
F (21-38)		
G (1-20)		
Not energy efficient - higher running costs		
England, Scotland & Wales		EU Directive 2002/91/EC

Chestertons Camden & Kentish Town Sales

99-101 Parkway

Camden

London

NW1 7PP

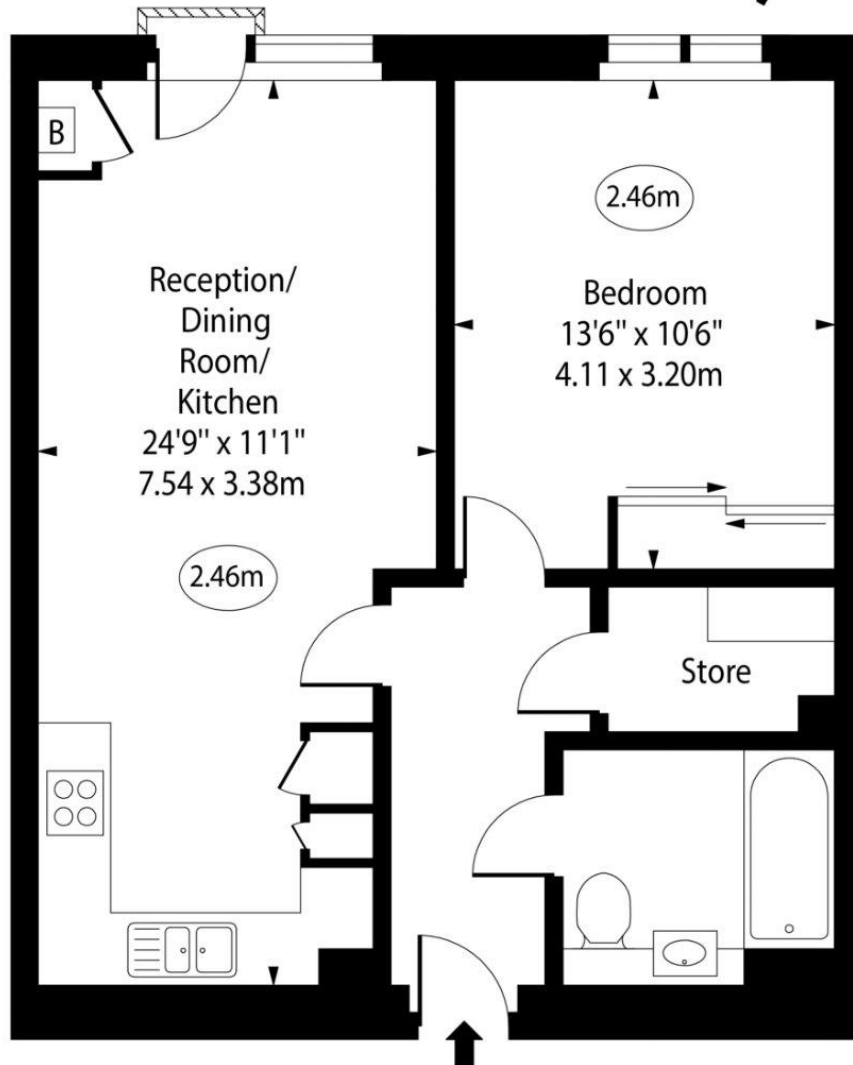
camden@chestertons.co.uk

020 7267 2053

chestertons.co.uk

Plender Street

○ - Ceiling Height



Fourth Floor

Gross Internal Area - 552 Sq Ft - 51.28 Sq M

Approx Gross Internal Area 552 Sq Ft - 51.28 Sq M

For Illustration Purposes Only - Not To Scale

www.goldlens.co.uk

Ref. No. 024647M

