



THE RIDINGS, GU16

KIER CHARLES

SURREY • BERKSHIRE • HANTS

THE RIDINGS, GU16

VIEW SAFELY WITH KIER.

LAUNCH 27TH AUGUST BETWEEN 10:30 - 13:00
STRICTLY BY APPOINTMENT ONLY.

A spacious family home having been extended creating a separate one bedroom annexe and doubling the main house size enjoying 3,267 sqft overall.

This unique home can either have the benefit of additional income or an ideal home to move an au pair or family members.

The property has been recently decorated and has been updated throughout the years having a refitted kitchen & bathrooms and boiler.

There is a private rear garden receiving excellent privacy, large patio & decking areas, predominantly laid to lawn, side access and two outbuildings.

The position of this family home is ideal offering excellent School catchment for junior and senior both within walking distance.

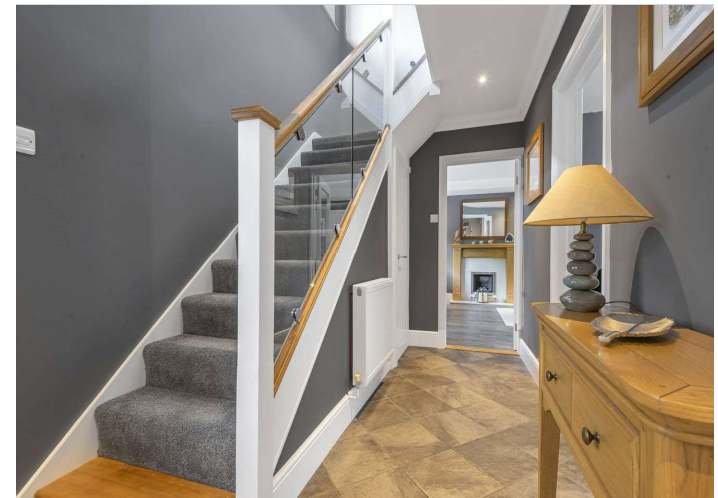
To fully appreciate the space, location and condition a personal tour with Kier is highly recommended.

- **FIVE BEDROOMS**
- **THREE BATHROOMS**
- **SELF CONTAINED ONE BEDROOM ANNEXE**
- **STUNNING QUIET LOCATION**
- **PRIVATE REAR GARDEN**
- **IDEAL SCHOOL CATCHMENTS**
- **EXCELLENT CONDITION**
- **LOVELY FAMILY HOME**

PROPERTY INFORMATION

Postcode		GU16 9RA
Tenure		Freehold
Price		£1,295,000
Viewing		By appointment with Kier Charles





The Ridings, Frimley, Camberley, GU16

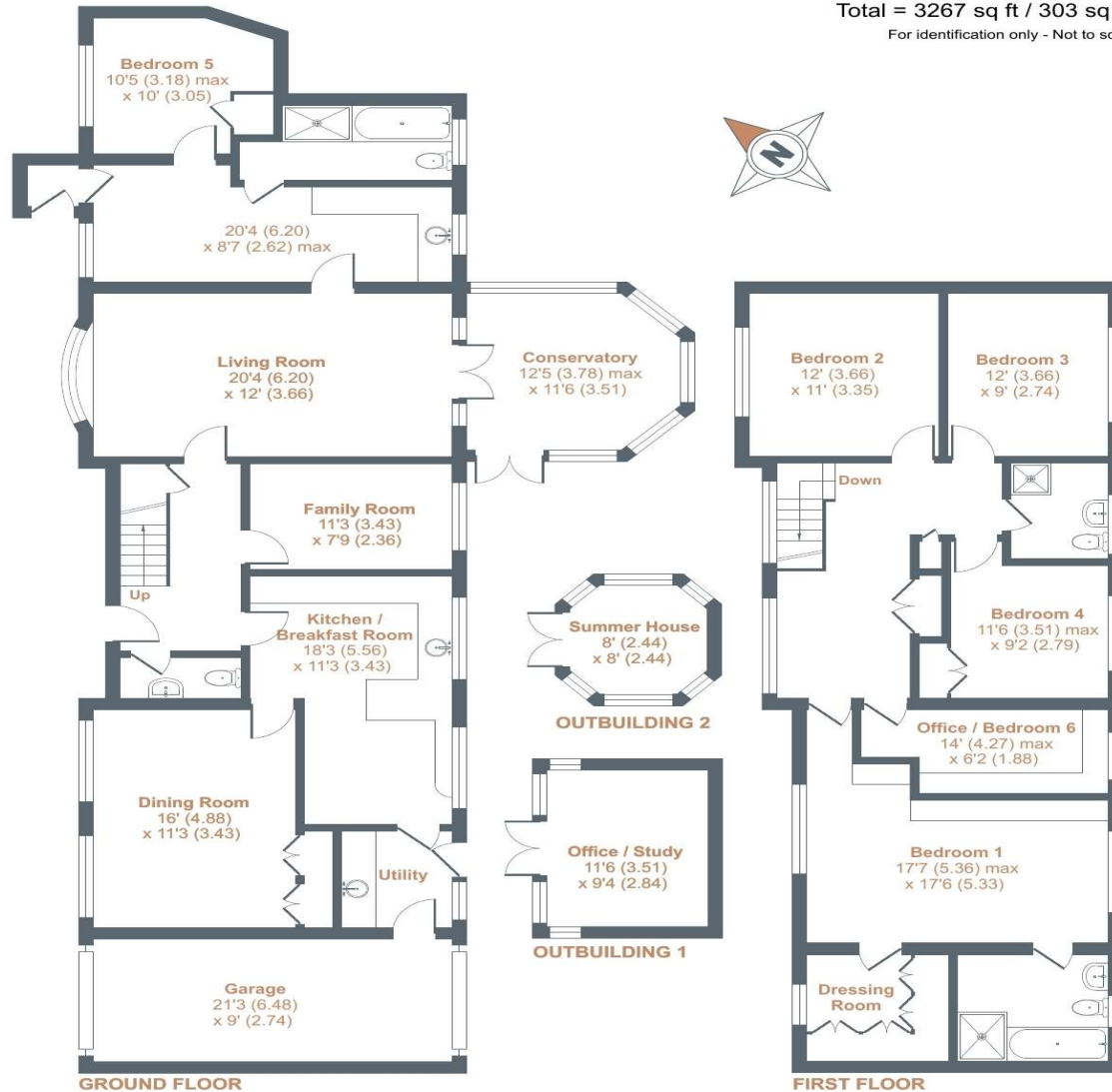
Approximate External Area = 3039 sq ft / 282 sq m (includes garage)

Outbuildings = 228 sq ft / 21 sq m

Total = 3267 sq ft / 303 sq m

For identification only - Not to scale

Denotes restricted head height



Floor plan produced in accordance with RICS Property Measurement Standards incorporating International Property Measurement Standards (IPMS2 Residential). © n/checom 2022. Produced for Kier Charles Property Services Limited. REF: 881293



CONTACT INFORMATION:

Surrey: 01276 949789

Berkshire: 01344 513789

Hampshire: 01252 213789

info@kiercharles.co.uk

KIER CHARLES

SURREY • BERKSHIRE • HANTS