



# Mortimer Court

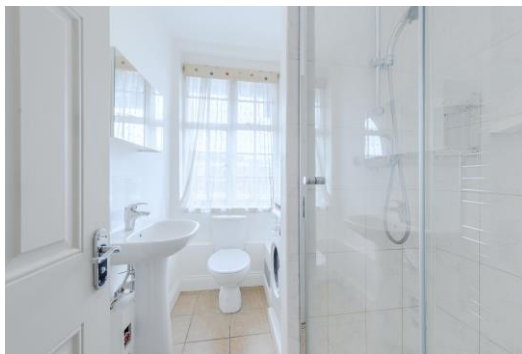
Abbey Road, NW8

Asking Price £400,000

Sole Agent. A superbly presented studio apartment located in the heart of St John's Wood, offering 378 sq. ft. of very bright accommodation.

Mortimer Court is situated on the world famous Abbey Road, close to the iconic studio and Beatles crossing. St John's Wood Underground station is less than half a mile away. The building has a porter, passenger lift and the property benefits from a recently extended long lease.





# Mortimer Court

Abbey Road, NW8

- Studio Apartment
- Share of Freehold
- 378 sq. ft.
- Porter
- Lift
- Very Good Condition





**Tenure:** Share of Freehold  
**Service Charge:** £6,144pa  
**Ground Rent:** £0  
**Local Authority:** City of Westminster  
**Council Tax Band:** C

Energy Efficiency Rating		
	Current	Potential
Very energy efficient - lower running costs		
A (94-100)		
B (81-93)		
C (69-80)	74	81
D (55-68)		
E (39-54)		
F (21-38)		
G (1-20)		
Not energy efficient - higher running costs		
England, Scotland & Wales EU Directive 2002/91/EC		

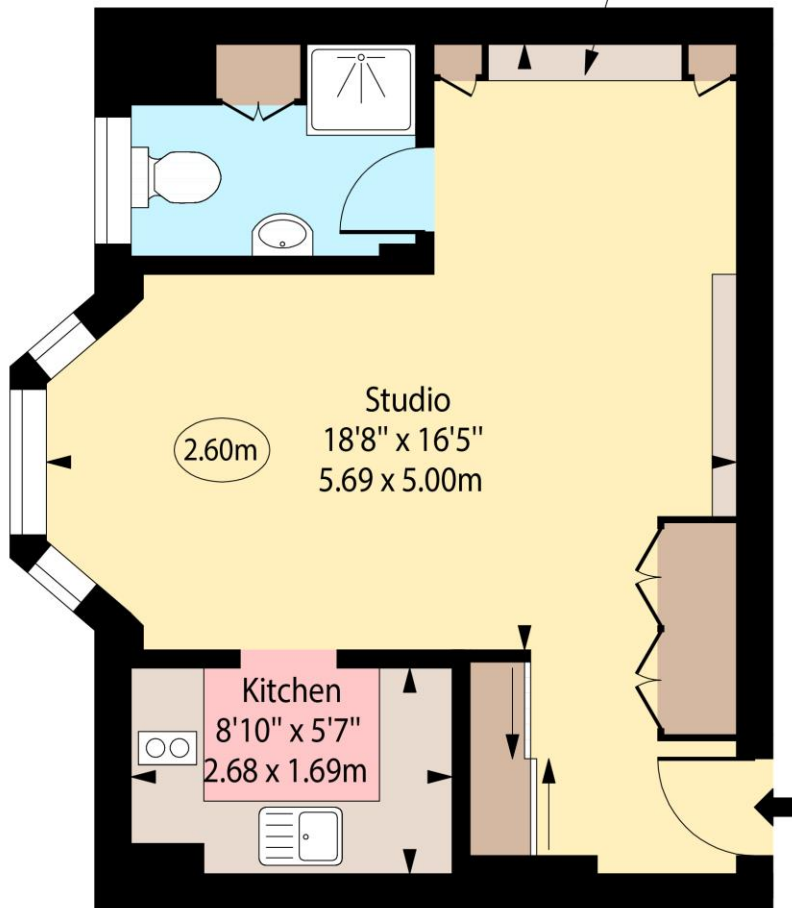
### *Chestertons St John's Wood Sales*

105 St. John's Wood Terrace  
London  
NW8 6PL  
stjohnswood@chestertons.co.uk  
020 3040 8611  
chestertons.co.uk

Mortimer Court,  
Abbey Road,  
St John's Wood, NW8

○ - Ceiling Height

Folding Bed



Sixth Floor

Approx Gross Internal Area      378 Sq Ft - 35.12 Sq M

For Illustration Purposes Only - Not To Scale

[www.goldlens.co.uk](http://www.goldlens.co.uk)

Produced for Chestertons

Ref. No. 027256J

