



FIRWOOD DRIVE, GU15

KIER CHARLES

SURREY • BERKSHIRE • HANTS

FIRWOOD DRIVE, GU15

VIEW WITH KIER CHARLES SURREY.

A rarely available character property having been extended and modernised throughout the years. Still retaining many character features and incorporating modern sash double glazed windows. The ground floor offers flexible living with four reception rooms, kitchen, downstairs shower room and a lovely entrance hall.

The first floor enjoys a master bedroom with bay window, two further bedrooms and family bathroom. There is parking for three vehicles, garage storage and side access to the rear garden. The garden is of a sunny aspect and is mainly laid to lawn with a patio and excellent privacy.

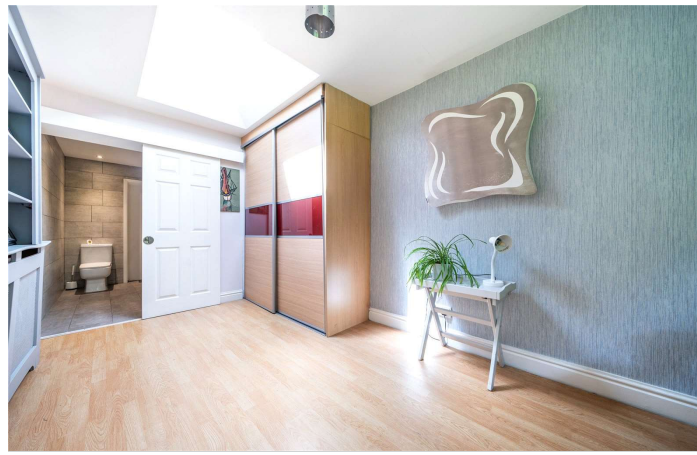
To fully appreciate the space, character, condition and central location a personal tour with Kier Charles is highly recommended.

- **THREE/FOUR BEDROOMS**
- **TWO BATHROOMS**
- **CHARACTER FEATURES**
- **FLEXIBLE LIVING**
- **TOWN CENTRE LOCATION**
- **THREE/FOUR RECEPTION ROOMS**
- **PRIVATE GARDEN & PARKING**

PROPERTY INFORMATION

Postcode | **GU15 3QD**
Tenure | **Freehold**
Price | **£650,000**
Viewing | **By appointment with Kier Charles**

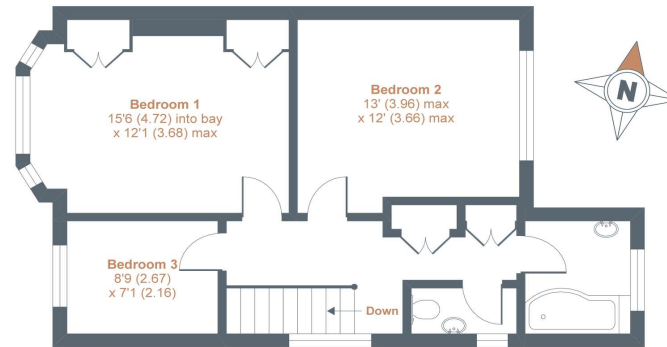




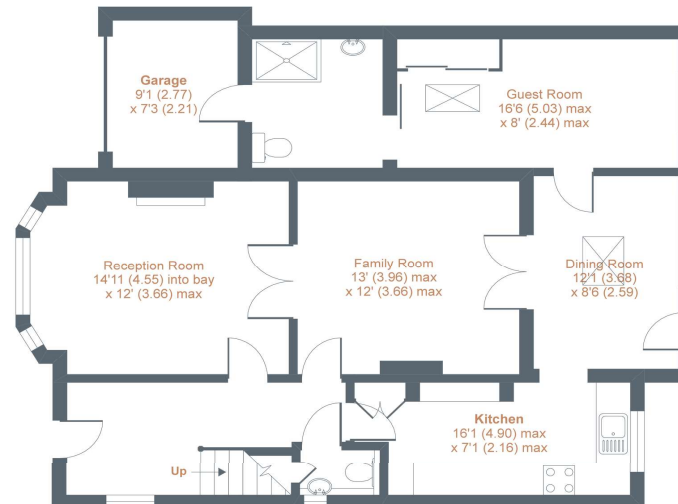
Firwood Drive, Camberley, GU15

Approximate Area = 1580 sq ft / 146.7 sq m (includes garage)

For identification only - Not to scale



FIRST FLOOR



GROUND FLOOR



Floor plan produced in accordance with RICS Property Measurement Standards incorporating International Property Measurement Standards (IPMS2 Residential). © nichecom 2020. Produced for Kier Charles Property Services Limited. REF: 679170



CONTACT INFORMATION:

Surrey: 01276 949789

Berkshire: 01344 513789

Hampshire: 01252 213789

info@kiercharles.co.uk

KIER CHARLES

SURREY • BERKSHIRE • HANTS