



FRIMLEY ROAD, GU15

KIER CHARLES

SURREY • BERKSHIRE • HANTS

FRIMLEY ROAD, GU15

VIEW WITH KIER CHARLES SURREY.

A spacious detached family home having been extended to the ground floor, positioned on a good size plot and offering easy reach to highly sought after junior and senior Schools.

The ground floor offers an inviting entrance hall, with access to the living room, an open plan kitchen / dining room, utility room with and a family room with access to the garden.

To the first floor there are three good sized bedrooms and a family bathroom.

To the front there is parking for several vehicles and side access to the rear garden. The rear garden offers a wealth of privacy with potential to extend stp. There is a patio area which is perfect for al fresco dining, a large lawn and a garage.

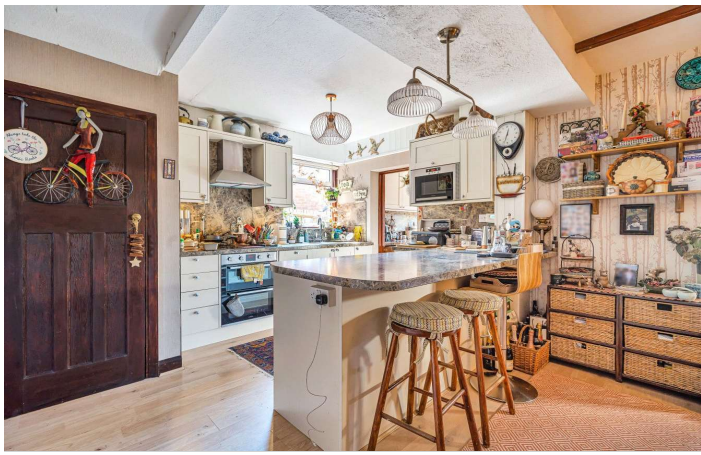
To fully appreciate this wonderful location, space and condition of this family home a personal tour by Kier Charles is highly recommended.

- **EXTENDED TO THE GROUND FLOOR**
- **OPEN PLAN KITCHEN/DINING ROOM**
- **TWO RECEPTION ROOMS**
- **UTILITY ROOM & W.C**
- **THREE DOUBLE BEDROOMS**
- **GOOD SIZE PRIVATE GARDEN**
- **DRIVEWAY PARKING**
- **GARAGE TO THE REAR**

PROPERTY INFORMATION

Postcode	GU15 2QL
Tenure	Freehold
Price	£485,000
Viewing	By appointment with Kier Charles





Frimley Road, Camberley, GU15

Approximate Internal Area = 1183 sq ft / 109.9 sq m

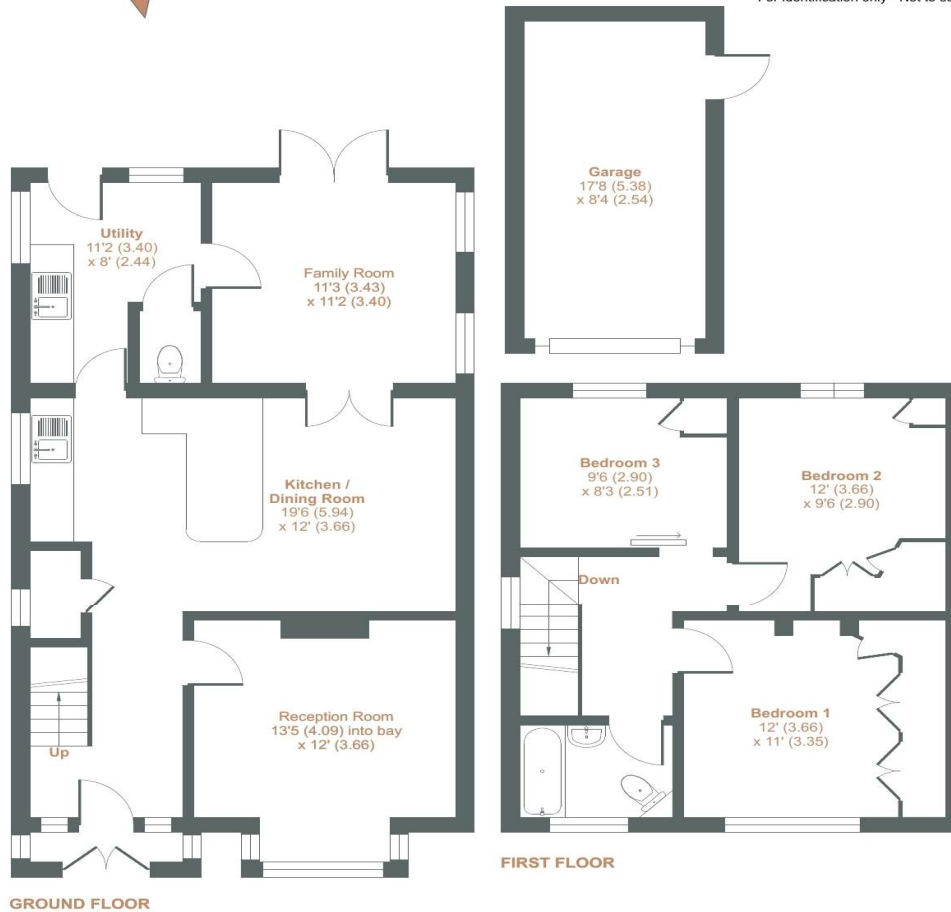
Approximate External Area = 1361 sq ft / 126.4 sq m

Garage = 147 sq ft / 13.6 sq m

Total Internal Area = 1330 sq ft / 123.5 sq m

Total External Area = 1554 sq ft / 144.3 sq m

For identification only - Not to scale



Floor plan produced in accordance with RICS Property Measurement Standards incorporating International Property Measurement Standards (IPMS2 Residential). © nrichecom 2024. Produced for Kier Charles Property Services Limited. REF: 1096452

KIER CHARLES
SURREY • BERKSHIRE • HANTS • LONDON

CONTACT INFORMATION:

Surrey: 01276 949789

Berkshire: 01344 513789

Hampshire: 01252 213789

info@kiercharles.co.uk

KIER CHARLES

SURREY • BERKSHIRE • HANTS